



Submittal Data Sheet

1.5-Ton 4-Way Blow Ceiling-Suspended - FXUQ18PVJU

Project: Coppell FS#3

Submitted by: Dan Torres of DXS INC FOR CENTRAL TEXAS on 8/23/2017

Submitted to: No Engineer Name Specified

Tags: AHU-9, AHU-10, AHU-4, AHU-5, AHU-7

FEATURES

- Low profile of less than 8" with the option to be partially recessed in a false ceiling
- Integral condensate pump with 19-1/2" lift and safety float switch
- Auto swing function ensures efficient air and temperature distribution
- Air can be discharged in five different angles between 0 and 60°
- Low sound pressure levels down to 36 dBA
- The optional Sensor Kit (occupancy and surface temperature) together with air temperature sensor and advanced control functions enables the unit to provide an exceptional comfort level, energy efficiency, and flexibility

BENEFITS

- Great solution for projects with low or no false ceilings thanks to the compact design
- The four individually controlled air louvers in the unit enable comfortable space environment in a variety of different room layouts
- Low energy consumption thanks to a specially developed small tube heat exchanger, DC fan motor and drain pump





Submittal Data Sheet

1.5-Ton 4-Way Blow Ceiling-Suspended - FXUQ18PVJU

Project: Coppell FS#3

Submitted by: Dan Torres of DXS INC FOR CENTRAL TEXAS on 8/23/2017

Submitted to: No Engineer Name Specified

Tags: AHU-9, AHU-10, AHU-4, AHU-5, AHU-7

PERFORMANCE

Indoor Unit Model No.	FXUQ18PVJU	Indoor Unit Name:	1.5-Ton 4-Way Blow Ceiling-Suspended
Type:	Ceiling Suspended	Rated Cooling Conditions:	Indoor (°F DB/WB): 80 / 67 Ambient (°F DB/WB): 95 / 75
Rated Cooling Capacity (Btu/hr):	18,000	Rated Heating Conditions:	Indoor (°F DB/WB): 70 / 60 Ambient (°F DB/WB): 47 / 43
Sensible Capacity (Btu/hr):		Rated Piping Length(ft):	
Cooling Input Power (kW):	0.090	Rated Height Separation (ft):	
Rated Heating Capacity (Btu/hr):	20,000		
Heating Input Power (kW):	0.07		

INDOOR UNIT DETAILS

Power Supply (V/Hz/Ph):	208-230 / 60 / 1	Airflow Rate (H/M/L) (CFM):	795/689/565
Power Supply Connections:	L1, L2, Ground	Moisture Removal (Gal/hr):	
Min. Circuit Amps MCA (A):	0.6	Gas Pipe Connection (inch):	1/2
Max Overcurrent Protection (MOP) (A):	15	Liquid Pipe Connection (inch):	1/4
Dimensions (HxWxD) (in):	7-13/16 x 37-3/8 x 37-3/8	Condensate Connection (inch):	1
Net Weight (lb):	58	Sound Pressure (H/M/L) (dBA):	40/38/36
Ext. Static Pressure (Rated/Max) (inWg):	/	Sound Power Level (dBA):	

Submittal Data Sheet

1.5-Ton 4-Way Blow Ceiling-Suspended - FXUQ18PVJU

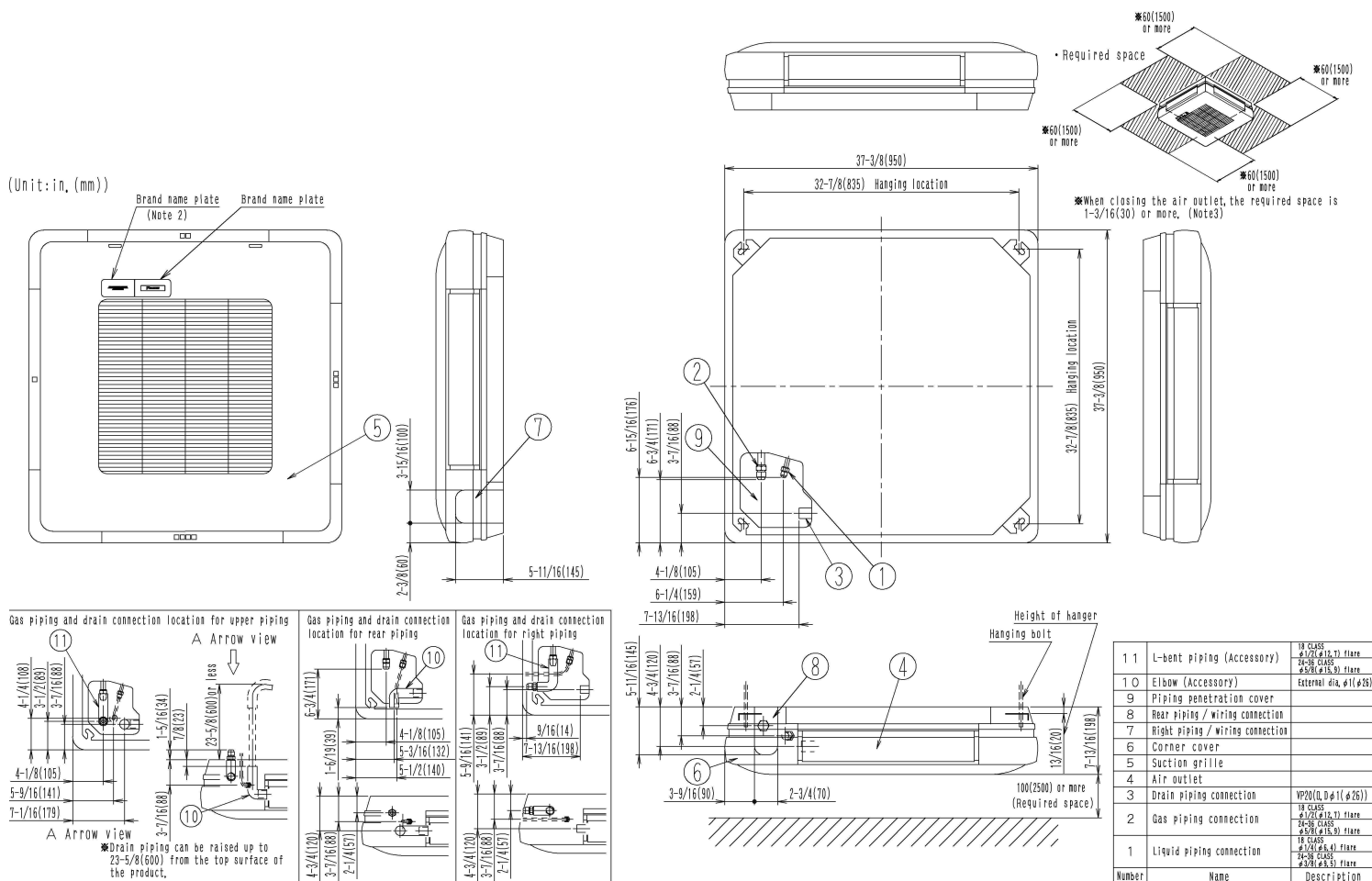
Project: Coppell FS#3

Submitted by: Dan Torres of DXS INC FOR CENTRAL TEXAS on 8/23/2017

Submitted to: No Engineer Name Specified

Tags: AHU-9, AHU-10, AHU-4, AHU-5, AHU-7

DIMENSIONAL DRAWING





Submittal Data Sheet

3.0-Ton 4-Way Blow Ceiling-Suspended - FXUQ36PVJU

Project: Coppell FS#3

Submitted by: Dan Torres of DXS INC FOR CENTRAL TEXAS on 8/23/2017

Submitted to: No Engineer Name Specified

Tags: AHU-12, AHU-13

FEATURES

- Low profile of less than 8" with the option to be partially recessed in a false ceiling
- Integral condensate pump with 19-1/2" lift and safety float switch
- Auto swing function ensures efficient air and temperature distribution
- Air can be discharged in five different angles between 0 and 60°
- Low sound pressure levels down to 36 dBA
- The optional Sensor Kit (occupancy and surface temperature) together with air temperature sensor and advanced control functions enables the unit to provide an exceptional comfort level, energy efficiency, and flexibility

BENEFITS

- Great solution for projects with low or no false ceilings thanks to the compact design
- The four individually controlled air louvers in the unit enable comfortable space environment in a variety of different room layouts
- Low energy consumption thanks to a specially developed small tube heat exchanger, DC fan motor and drain pump





Submittal Data Sheet

3.0-Ton 4-Way Blow Ceiling-Suspended - FXUQ36PVJU

Project: Coppell FS#3

Submitted by: Dan Torres of DXS INC FOR CENTRAL TEXAS on 8/23/2017

Submitted to: No Engineer Name Specified

Tags: AHU-12, AHU-13

PERFORMANCE

Indoor Unit Model No.	FXUQ36PVJU	Indoor Unit Name:	3.0-Ton 4-Way Blow Ceiling-Suspended
Type:	Ceiling Suspended	Rated Cooling Conditions:	Indoor (°F DB/WB): 80 / 67 Ambient (°F DB/WB): 95 / 75
Rated Cooling Capacity (Btu/hr):	36,000	Rated Heating Conditions:	Indoor (°F DB/WB): 70 / 60 Ambient (°F DB/WB): 47 / 43
Sensible Capacity (Btu/hr):		Rated Piping Length(ft):	
Cooling Input Power (kW):	0.200	Rated Height Separation (ft):	
Rated Heating Capacity (Btu/hr):	40,000		
Heating Input Power (kW):	0.18		

INDOOR UNIT DETAILS

Power Supply (V/Hz/Ph):	208-230 / 60 / 1	Airflow Rate (H/M/L) (CFM):	1095/918/742
Power Supply Connections:	L1, L2, Ground	Moisture Removal (Gal/hr):	
Min. Circuit Amps MCA (A):	1.4	Gas Pipe Connection (inch):	5/8
Max Overcurrent Protection (MOP) (A):	15	Liquid Pipe Connection (inch):	3/8
Dimensions (HxWxD) (in):	7-13/16 x 37-3/8 x 37-3/8	Condensate Connection (inch):	1
Net Weight (lb):	60	Sound Pressure (H/M/L) (dBA):	47/44/40
Ext. Static Pressure (Rated/Max) (inWg):	/	Sound Power Level (dBA):	

Submittal Data Sheet

3.0-Ton 4-Way Blow Ceiling-Suspended - FXUQ36PVJU

Project: Coppell FS#3

Submitted by: Dan Torres of DXS INC FOR CENTRAL TEXAS on 8/23/2017

Submitted to: No Engineer Name Specified

Tags: AHU-12, AHU-13

DIMENSIONAL DRAWING

