



Submittal Data Sheet

10ton, 230v vrv - RXYQ120TTJU

Project: Coppell FS#3

Submitted by: Dan Torres of DXS INC FOR CENTRAL TEXAS on 8/23/2017

Submitted to: No Engineer Name Specified

Tags: CU-2

FEATURES

- Variable Refrigerant Temperature (VRT) control allows the VRV IV to deliver up to 28% of improvement in seasonal cooling efficiency compared to previous Daikin VRV heat pump systems
- Same product structure for 230V and 460V simplifies ordering
- The rated seasonal cooling efficiency has been improved by an average of 11% compared to VRV III
- Improved efficiency with IEER values now up to 28
- Larger capacity single modules ranging up to 14 tons and systems up to 34 tons allow for a more flexible system design
- New configurator software designed to simplify the commissioning and maintenance of the system
- Larger capacity single modules allow for opportunity to reduce electrical connections, piping connections and outdoor unit mounting fixtures
- System wide auto-climate adjustment technology to increase the energy efficiency
- All inverter compressors to increase the efficiency and avoid starting current inrush
- Assembled in the US to increase flexibility and reduce lead times
- Standard Limited Warranty: 10-year warranty on compressor and all parts
- Factory standard coil guards



BENEFITS

- 3 row 7mm heat exchanger coil improves efficiency
- Inverter control board cooled by refrigerant to avoid influence from ambient temperatures
- Heat exchanger coil wraps around on all 4 sides of the unit to increase the surface area / efficiency
- Designed with reduced MOP to optimize installation cost
- Digital display on the unit for improved and faster configuration, commissioning, and trouble shooting.



VRV IV





Submittal Data Sheet

10ton, 230v vrv - RXYQ120TTJU

Project: Coppell FS#3

Submitted by: Dan Torres of DXS INC FOR CENTRAL TEXAS on 8/23/2017

Submitted to: No Engineer Name Specified

Tags: CU-2

PERFORMANCE			
Outdoor Unit Model No.	RXYQ120TTJU	Outdoor Unit Name:	10ton, 230v vrv
Type:	Heat Pump	Unit Combination:	
Rated Cooling Conditions:	Indoor (°F DB/WB): 80 / 67 Ambient (°F DB/WB): 95 / 75	Rated Heating Conditions:	Indoor (°F DB/WB): 70 / 60 Ambient (°F DB/WB): 47 / 43
Rated Piping Length(ft):			
Rated Height Difference (ft):			
Rated Cooling Capacity (Btu/hr):	114,000	Rated Heating Capacity (Btu/hr):	129,000
Nom Cooling Capacity (Btu/hr):	120,000	Nom Heating Capacity (Btu/hr):	135,000
Cooling Input Power (kW):	9.00	Heating Input Power (kW):	9.92
EER (Non-Ducted/Ducted):	13.20 / 12.10	Heating COP (Non-Ducted/Ducted):	3.8 / 3.5
IEER (Non-Ducted/Ducted):	23.50 / 21.40	Heating COP 17F (Non-Ducted/Ducted):	2.6 / 2.6
OUTDOOR UNIT DETAILS			
Power Supply (V/Hz/Ph):	208-230 / 60 / 3	Compressor Stage:	Inverter
Power Supply Connections:	L1, L2, L3 Ground	Capacity Control Range (%):	15 - 100
Min. Circuit Amps MCA (A):	36.3	Capacity Index Limit:	60.0 - 156.0
Max Overcurrent Protection (MOP) (A):	45	Airflow Rate (H) (CFM):	6286
Max Starting Current MSC(A):		Gas Pipe Connection (inch):	1-1/8
Rated Load Amps RLA(A):	26.2	Liquid Pipe Connection (inch):	1/2
Dimensions (Height) (in):	66-11/16	H/L Pressure Connection (inch)	
Dimensions (Width) (in):	48-7/8	H/L Equalizing Connection (inch)	
Dimensions (Depth) (in):	30-3/16	Sound Pressure (H) (dBA):	61
Net Weight (lb):	528	Sound Power Level (dBA):	
		Max. No. of Indoor Units:	20



Submittal Data Sheet

10ton, 230v vrv - RXYQ120TTJU

Project: Coppell FS#3

Submitted by: Dan Torres of DXS INC FOR CENTRAL TEXAS on 8/23/2017

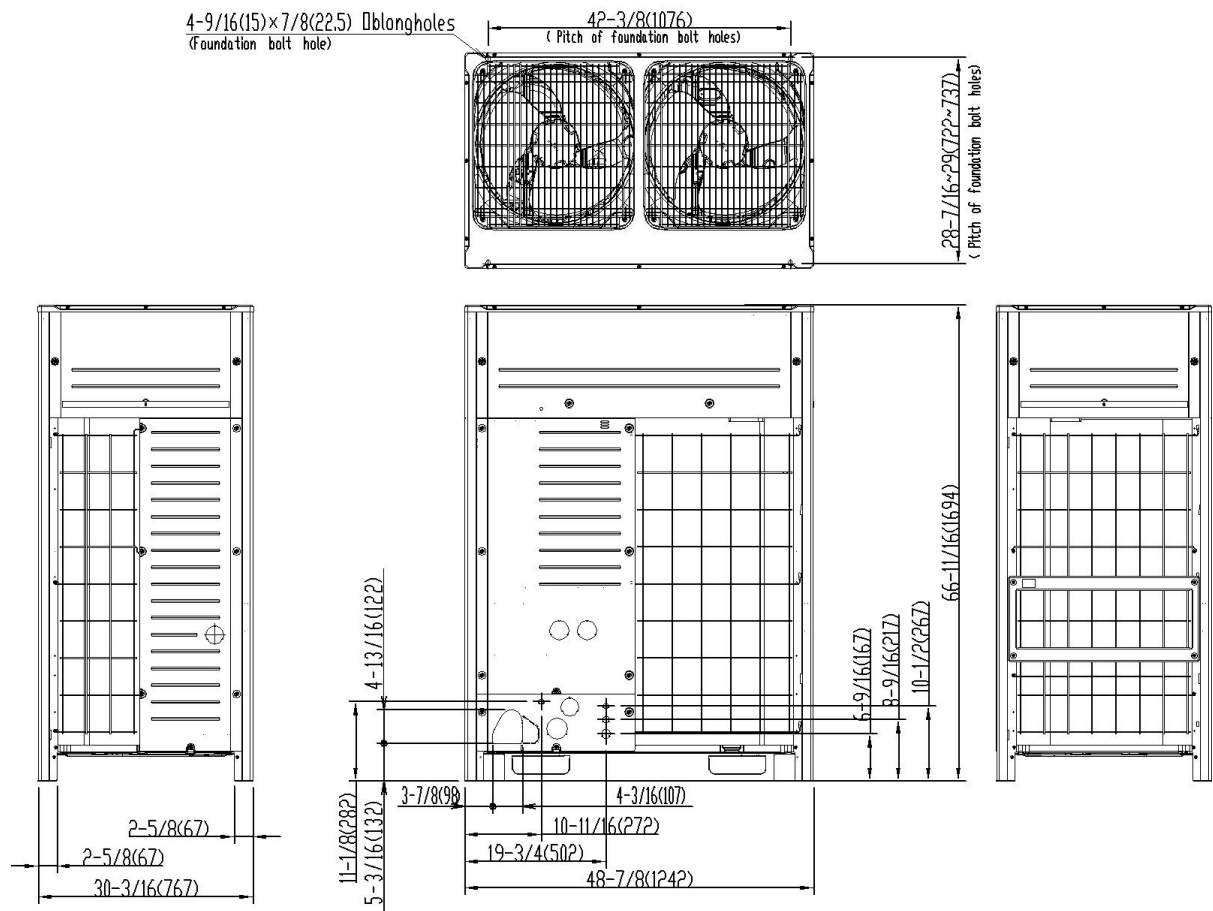
Submitted to: No Engineer Name Specified

Tags: CU-2

SYSTEM DETAILS

Refrigerant Type:	R-410A	Cooling Operation Range (°F DB):	23 - 122
Holding Refrigerant Charge (lbs):	22.9	Heating Operation Range (°F WB):	-4 - 60
Additional Charge (lb/ft):		Max. Pipe Length (Vertical) (ft):	295
Pre-charge Piping (Length) (ft):		Cooling Range w/Baffle (°F DB):	-
Max. Pipe Length (Total) (ft):	540	Heating Range w/Baffle (°F WB):	-
Max Height Separation (Ind to Ind ft):			

DIMENSIONAL DRAWING





Submittal Data Sheet

8ton, 230v vrv - RXYQ96TTJU

Project: Coppell FS#3

Submitted by: Dan Torres of DXS INC FOR CENTRAL TEXAS on 8/23/2017

Submitted to: No Engineer Name Specified

Tags: CU-1

FEATURES

- Variable Refrigerant Temperature (VRT) control allows the VRV IV to deliver up to 28% of improvement in seasonal cooling efficiency compared to previous Daikin VRV heat pump systems
- Same product structure for 230V and 460V simplifies ordering
- The rated seasonal cooling efficiency has been improved by an average of 11% compared to VRV III
- Improved efficiency with IEER values now up to 28
- Larger capacity single modules ranging up to 14 tons and systems up to 34 tons allow for a more flexible system design
- New configurator software designed to simplify the commissioning and maintenance of the system
- Larger capacity single modules allow for opportunity to reduce electrical connections, piping connections and outdoor unit mounting fixtures
- System wide auto-climate adjustment technology to increase the energy efficiency
- All inverter compressors to increase the efficiency and avoid starting current inrush
- Factory standard coil guards
- Assembled in the US to increase flexibility and reduce lead times
- Standard Limited Warranty: 10-year warranty on compressor and all parts



BENEFITS

- 3 row 7mm heat exchanger coil improves efficiency
- Inverter control board cooled by refrigerant to avoid influence from ambient temperatures
- Heat exchanger coil wraps around on all 4 sides of the unit to increase the surface area / efficiency
- Designed with reduced MOP to optimize installation cost
- Digital display on the unit for improved and faster configuration, commissioning, and trouble shooting.



VRV IV





Submittal Data Sheet

8ton, 230v vrv - RXYQ96TTJU

Project: Coppell FS#3

Submitted by: Dan Torres of DXS INC FOR CENTRAL TEXAS on 8/23/2017

Submitted to: No Engineer Name Specified

Tags: CU-1

PERFORMANCE

Outdoor Unit Model No.	RXYQ96TTJU	Outdoor Unit Name:	8ton, 230v vrv
Type:	Heat Pump	Unit Combination:	
Rated Cooling Conditions:	Indoor (°F DB/WB): 80 / 67 Ambient (°F DB/WB): 95 / 75	Rated Heating Conditions:	Indoor (°F DB/WB): 70 / 60 Ambient (°F DB/WB): 47 / 43
Rated Piping Length(ft):			
Rated Height Difference (ft):			
Rated Cooling Capacity (Btu/hr):	92,000	Rated Heating Capacity (Btu/hr):	103,000
Nom Cooling Capacity (Btu/hr):	96,000	Nom Heating Capacity (Btu/hr):	108,000
Cooling Input Power (kW):	6.11	Heating Input Power (kW):	6.62
EER (Non-Ducted/Ducted):	15.10 / 13.00	Heating COP (Non-Ducted/Ducted):	4.6 / 4.0
IEER (Non-Ducted/Ducted):	28.00 / 22.70	Heating COP 17F (Non-Ducted/Ducted):	2.9 / 2.6

OUTDOOR UNIT DETAILS

Power Supply (V/Hz/Ph):	208-230 / 60 / 3	Compressor Stage:	Inverter
Power Supply Connections:	L1, L2, L3 Ground	Capacity Control Range (%):	16 - 100
Min. Circuit Amps MCA (A):	36.3	Capacity Index Limit:	48.0 - 125.0
Max Overcurrent Protection (MOP) (A):	45	Airflow Rate (H) (CFM):	5827
Max Starting Current MSC(A):		Gas Pipe Connection (inch):	7/8
Rated Load Amps RLA(A):	23.8	Liquid Pipe Connection (inch):	3/8
Dimensions (Height) (in):	66-11/16	H/L Pressure Connection (inch)	
Dimensions (Width) (in):	48-7/8	H/L Equalizing Connection (inch)	
Dimensions (Depth) (in):	30-3/16	Sound Pressure (H) (dBA):	61
Net Weight (lb):	525	Sound Power Level (dBA):	
		Max. No. of Indoor Units:	16



Submittal Data Sheet

8ton, 230v vrv - RXYQ96TTJU

Project: Coppell FS#3

Submitted by: Dan Torres of DXS INC FOR CENTRAL TEXAS on 8/23/2017

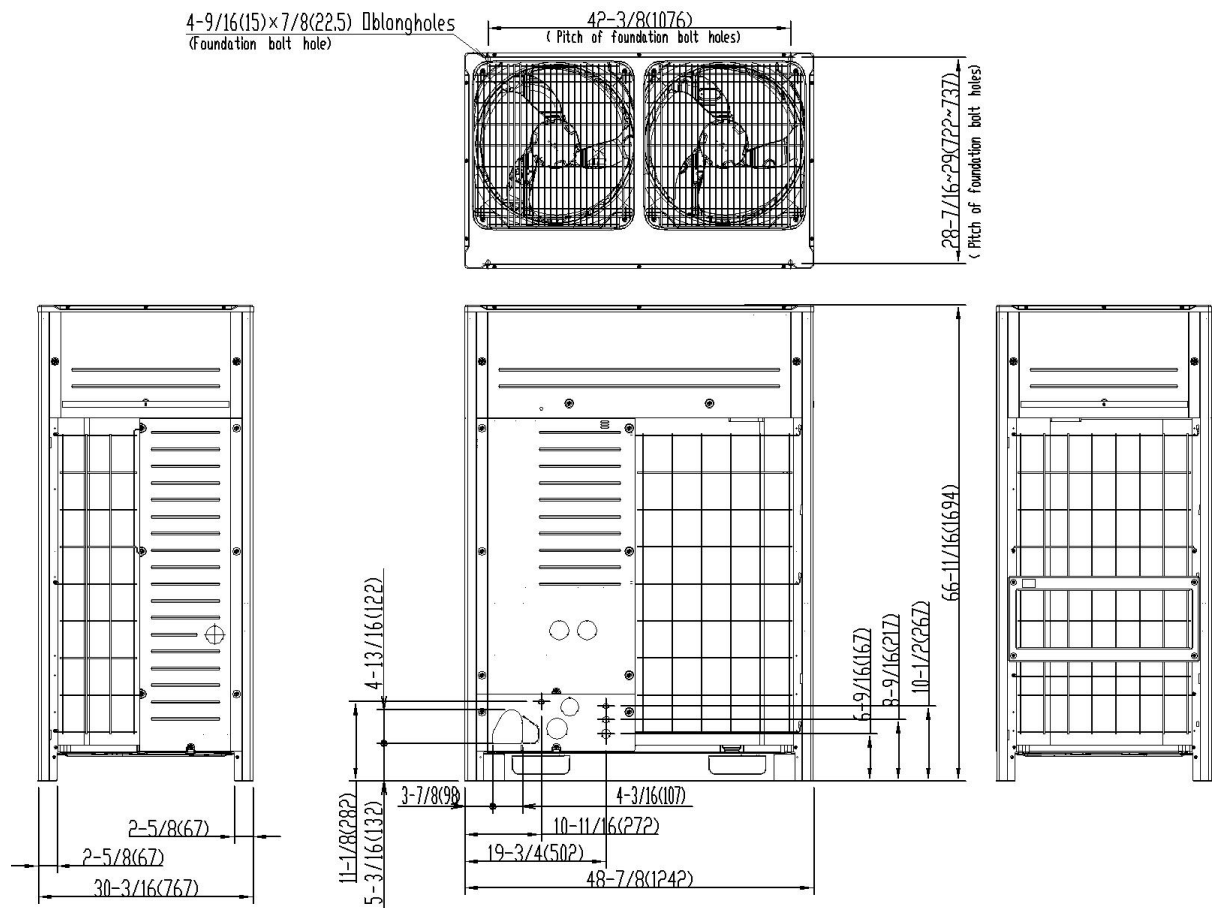
Submitted to: No Engineer Name Specified

Tags: CU-1

SYSTEM DETAILS

Refrigerant Type:	R-410A	Cooling Operation Range (°F DB):	23 - 122
Holding Refrigerant Charge (lbs):	22.7	Heating Operation Range (°F WB):	-4 - 60
Additional Charge (lb/ft):		Max. Pipe Length (Vertical) (ft):	295
Pre-charge Piping (Length) (ft):		Cooling Range w/Baffle (°F DB):	-
Max. Pipe Length (Total) (ft):	540	Heating Range w/Baffle (°F WB):	-
Max Height Separation (Ind to Ind ft):			

DIMENSIONAL DRAWING





Submittal Data Sheet

0.5-Ton Wall Mounted Unit - FXAQ07PVJU

Project: Coppell FS#3

Submitted by: Dan Torres of DXS INC FOR CENTRAL TEXAS on 8/23/2017

Submitted to: No Engineer Name Specified

Tags: AHU-11, AHU-2, AHU-3

FEATURES

- Auto-swing mechanism ensures efficient air distribution via louvers that automatically close when the unit is turned off
- Easy to clean front panel with a flat smooth surface that can be removed for additional cleaning
- Five different airflow distribution angles programmable by the optional controller
- Condensate drain pipe can be installed on either the left or right side of the unit
- Wide air discharge outlet distributes a comfortable airflow throughout the entire space
- Standard Limited Warranty: 10-year warranty on compressor and all parts





Submittal Data Sheet

0.5-Ton Wall Mounted Unit - FXAQ07PVJU

Project: Coppell FS#3

Submitted by: Dan Torres of DXS INC FOR CENTRAL TEXAS on 8/23/2017

Submitted to: No Engineer Name Specified

Tags: AHU-11, AHU-2, AHU-3

PERFORMANCE

Indoor Unit Model No.	FXAQ07PVJU	Indoor Unit Name:	0.5-Ton Wall Mounted Unit
Type:	Wall Mounted	Rated Cooling Conditions:	Indoor (°F DB/WB): 80 / 67 Ambient (°F DB/WB): 95 / 75
Rated Cooling Capacity (Btu/hr):	7,500	Rated Heating Conditions:	Indoor (°F DB/WB): 70 / 60 Ambient (°F DB/WB): 47 / 43
Sensible Capacity (Btu/hr):	6,400	Rated Piping Length(ft):	
Cooling Input Power (kW):	0.020	Rated Height Separation (ft):	
Rated Heating Capacity (Btu/hr):	8,500		
Heating Input Power (kW):	0.03		

INDOOR UNIT DETAILS

Power Supply (V/Hz/Ph):	208-230 / 60 / 1	Airflow Rate (H/L) (CFM):	260/160
Power Supply Connections:	L1, L2, Ground	Moisture Removal (Gal/hr):	
Min. Circuit Amps MCA (A):	0.4	Gas Pipe Connection (inch):	1/2
Max Overcurrent Protection (MOP) (A):	15	Liquid Pipe Connection (inch):	1/4
Dimensions (HxWxD) (in):	11-3/8 x 31-1/4 x 9-1/4	Condensate Connection (inch):	11/16
Net Weight (lb):	26	Sound Pressure (H/L) (dBA):	36/31
Ext. Static Pressure (Rated/Max) (inWg):	/	Sound Power Level (dBA):	

Submittal Data Sheet

0.5-Ton Wall Mounted Unit - FXAQ07PVJU

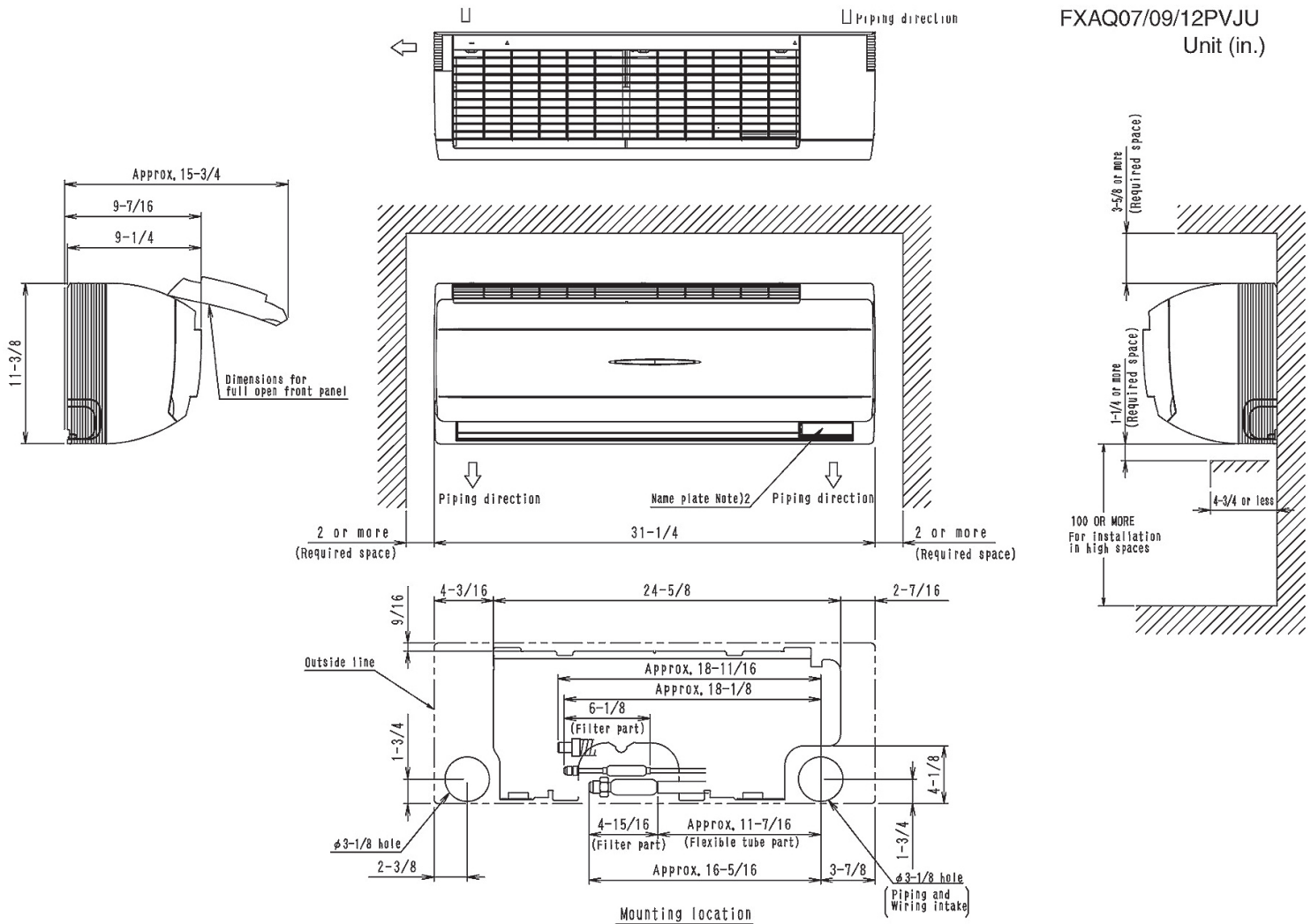
Project: Coppell FS#3

Submitted by: Dan Torres of DXS INC FOR CENTRAL TEXAS on 8/23/2017

Submitted to: No Engineer Name Specified

Tags: AHU-11, AHU-2, AHU-3

DIMENSIONAL DRAWING





Submittal Data Sheet

2.0-Ton Wall Mounted Unit - FXAQ24PVJU

Project: Coppell FS#3

Submitted by: Dan Torres of DXS INC FOR CENTRAL TEXAS on 8/23/2017

Submitted to: No Engineer Name Specified

Tags: AHU-6, AHU-8

FEATURES

- Auto-swing mechanism ensures efficient air distribution via louvers that automatically close when the unit is turned off
- Easy to clean front panel with a flat smooth surface that can be removed for additional cleaning
- Five different airflow distribution angles programmable by the optional controller
- Condensate drain pipe can be installed on either the left or right side of the unit
- Wide air discharge outlet distributes a comfortable airflow throughout the entire space
- Standard Limited Warranty: 10-year warranty on compressor and all parts





Submittal Data Sheet

2.0-Ton Wall Mounted Unit - FXAQ24PVJU

Project: Coppell FS#3

Submitted by: Dan Torres of DXS INC FOR CENTRAL TEXAS on 8/23/2017

Submitted to: No Engineer Name Specified

Tags: AHU-6, AHU-8

PERFORMANCE

Indoor Unit Model No.	FXAQ24PVJU	Indoor Unit Name:	2.0-Ton Wall Mounted Unit
Type:	Wall Mounted	Rated Cooling Conditions:	Indoor (°F DB/WB): 80 / 67 Ambient (°F DB/WB): 95 / 75
Rated Cooling Capacity (Btu/hr):	24,000	Rated Heating Conditions:	Indoor (°F DB/WB): 70 / 60 Ambient (°F DB/WB): 47 / 43
Sensible Capacity (Btu/hr):	18,000	Rated Piping Length(ft):	
Cooling Input Power (kW):	0.050	Rated Height Separation (ft):	
Rated Heating Capacity (Btu/hr):	26,500		
Heating Input Power (kW):	0.06		

INDOOR UNIT DETAILS

Power Supply (V/Hz/Ph):	208-230 / 60 / 1	Airflow Rate (H/L) (CFM):	635/470
Power Supply Connections:	L1, L2, Ground	Moisture Removal (Gal/hr):	
Min. Circuit Amps MCA (A):	0.6	Gas Pipe Connection (inch):	5/8
Max Overcurrent Protection (MOP) (A):	15	Liquid Pipe Connection (inch):	3/8
Dimensions (HxWxD) (in):	11-3/8 x 41-3/8 x 9-1/4	Condensate Connection (inch):	11/16
Net Weight (lb):	31	Sound Pressure (H/L) (dBA):	47/41
Ext. Static Pressure (Rated/Max) (inWg):	/	Sound Power Level (dBA):	



Submittal Data Sheet

2.0-Ton Wall Mounted Unit - FXAQ24PVJU

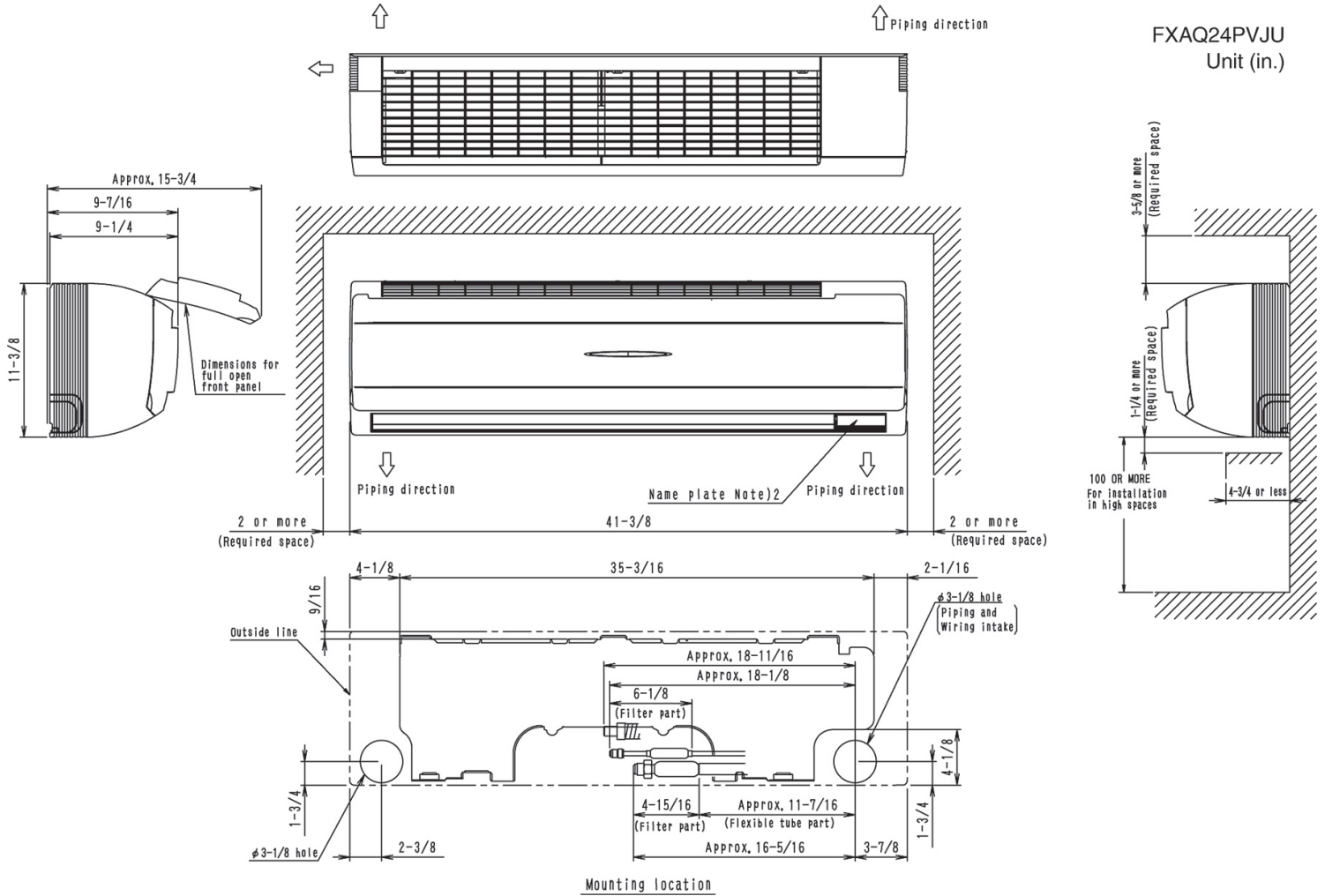
Project: Coppell FS#3

Submitted by: Dan Torres of DXS INC FOR CENTRAL TEXAS on 8/23/2017

Submitted to: No Engineer Name Specified

Tags: AHU-6, AHU-8

DIMENSIONAL DRAWING





Submittal Data Sheet

1.5-Ton 4-Way Blow Ceiling-Suspended - FXUQ18PVJU

Project: Coppell FS#3

Submitted by: Dan Torres of DXS INC FOR CENTRAL TEXAS on 8/23/2017

Submitted to: No Engineer Name Specified

Tags: AHU-9, AHU-10, AHU-4, AHU-5, AHU-7

FEATURES

- Low profile of less than 8" with the option to be partially recessed in a false ceiling
- Integral condensate pump with 19-1/2" lift and safety float switch
- Auto swing function ensures efficient air and temperature distribution
- Air can be discharged in five different angles between 0 and 60°
- Low sound pressure levels down to 36 dBA
- The optional Sensor Kit (occupancy and surface temperature) together with air temperature sensor and advanced control functions enables the unit to provide an exceptional comfort level, energy efficiency, and flexibility

BENEFITS

- Great solution for projects with low or no false ceilings thanks to the compact design
- The four individually controlled air louvers in the unit enable comfortable space environment in a variety of different room layouts
- Low energy consumption thanks to a specially developed small tube heat exchanger, DC fan motor and drain pump





Submittal Data Sheet

1.5-Ton 4-Way Blow Ceiling-Suspended - FXUQ18PVJU

Project: Coppell FS#3

Submitted by: Dan Torres of DXS INC FOR CENTRAL TEXAS on 8/23/2017

Submitted to: No Engineer Name Specified

Tags: AHU-9, AHU-10, AHU-4, AHU-5, AHU-7

PERFORMANCE

Indoor Unit Model No.	FXUQ18PVJU	Indoor Unit Name:	1.5-Ton 4-Way Blow Ceiling-Suspended
Type:	Ceiling Suspended	Rated Cooling Conditions:	Indoor (°F DB/WB): 80 / 67 Ambient (°F DB/WB): 95 / 75
Rated Cooling Capacity (Btu/hr):	18,000	Rated Heating Conditions:	Indoor (°F DB/WB): 70 / 60 Ambient (°F DB/WB): 47 / 43
Sensible Capacity (Btu/hr):		Rated Piping Length(ft):	
Cooling Input Power (kW):	0.090	Rated Height Separation (ft):	
Rated Heating Capacity (Btu/hr):	20,000		
Heating Input Power (kW):	0.07		

INDOOR UNIT DETAILS

Power Supply (V/Hz/Ph):	208-230 / 60 / 1	Airflow Rate (H/M/L) (CFM):	795/689/565
Power Supply Connections:	L1, L2, Ground	Moisture Removal (Gal/hr):	
Min. Circuit Amps MCA (A):	0.6	Gas Pipe Connection (inch):	1/2
Max Overcurrent Protection (MOP) (A):	15	Liquid Pipe Connection (inch):	1/4
Dimensions (HxWxD) (in):	7-13/16 x 37-3/8 x 37-3/8	Condensate Connection (inch):	1
Net Weight (lb):	58	Sound Pressure (H/M/L) (dBA):	40/38/36
Ext. Static Pressure (Rated/Max) (inWg):	/	Sound Power Level (dBA):	

Submittal Data Sheet

1.5-Ton 4-Way Blow Ceiling-Suspended - FXUQ18PVJU

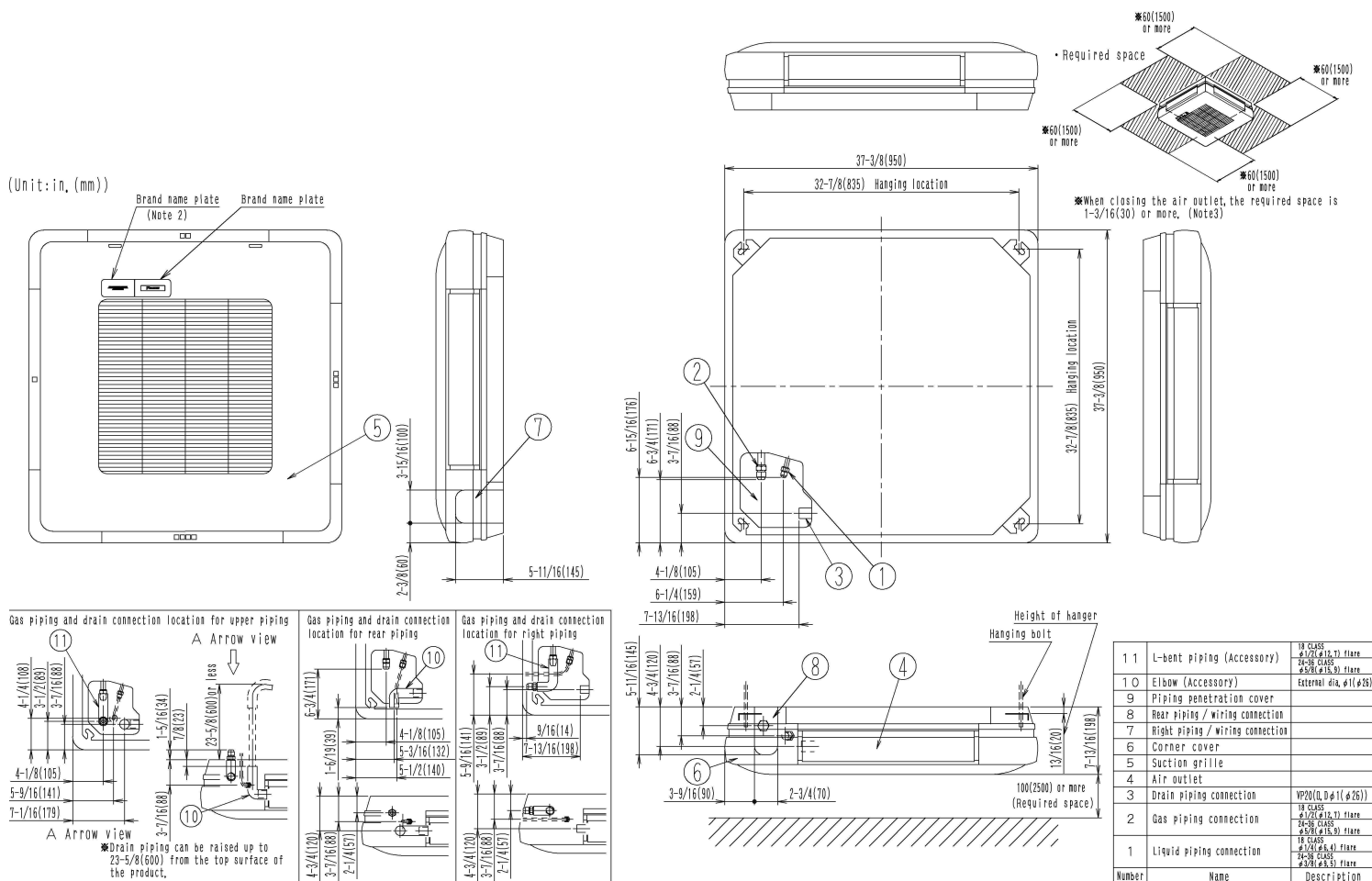
Project: Coppell FS#3

Submitted by: Dan Torres of DXS INC FOR CENTRAL TEXAS on 8/23/2017

Submitted to: No Engineer Name Specified

Tags: AHU-9, AHU-10, AHU-4, AHU-5, AHU-7

DIMENSIONAL DRAWING





Submittal Data Sheet

3.0-Ton 4-Way Blow Ceiling-Suspended - FXUQ36PVJU

Project: Coppell FS#3

Submitted by: Dan Torres of DXS INC FOR CENTRAL TEXAS on 8/23/2017

Submitted to: No Engineer Name Specified

Tags: AHU-12, AHU-13

FEATURES

- Low profile of less than 8" with the option to be partially recessed in a false ceiling
- Integral condensate pump with 19-1/2" lift and safety float switch
- Auto swing function ensures efficient air and temperature distribution
- Air can be discharged in five different angles between 0 and 60°
- Low sound pressure levels down to 36 dBA
- The optional Sensor Kit (occupancy and surface temperature) together with air temperature sensor and advanced control functions enables the unit to provide an exceptional comfort level, energy efficiency, and flexibility

BENEFITS

- Great solution for projects with low or no false ceilings thanks to the compact design
- The four individually controlled air louvers in the unit enable comfortable space environment in a variety of different room layouts
- Low energy consumption thanks to a specially developed small tube heat exchanger, DC fan motor and drain pump





Submittal Data Sheet

3.0-Ton 4-Way Blow Ceiling-Suspended - FXUQ36PVJU

Project: Coppell FS#3

Submitted by: Dan Torres of DXS INC FOR CENTRAL TEXAS on 8/23/2017

Submitted to: No Engineer Name Specified

Tags: AHU-12, AHU-13

PERFORMANCE

Indoor Unit Model No.	FXUQ36PVJU	Indoor Unit Name:	3.0-Ton 4-Way Blow Ceiling-Suspended
Type:	Ceiling Suspended	Rated Cooling Conditions:	Indoor (°F DB/WB): 80 / 67 Ambient (°F DB/WB): 95 / 75
Rated Cooling Capacity (Btu/hr):	36,000	Rated Heating Conditions:	Indoor (°F DB/WB): 70 / 60 Ambient (°F DB/WB): 47 / 43
Sensible Capacity (Btu/hr):		Rated Piping Length(ft):	
Cooling Input Power (kW):	0.200	Rated Height Separation (ft):	
Rated Heating Capacity (Btu/hr):	40,000		
Heating Input Power (kW):	0.18		

INDOOR UNIT DETAILS

Power Supply (V/Hz/Ph):	208-230 / 60 / 1	Airflow Rate (H/M/L) (CFM):	1095/918/742
Power Supply Connections:	L1, L2, Ground	Moisture Removal (Gal/hr):	
Min. Circuit Amps MCA (A):	1.4	Gas Pipe Connection (inch):	5/8
Max Overcurrent Protection (MOP) (A):	15	Liquid Pipe Connection (inch):	3/8
Dimensions (HxWxD) (in):	7-13/16 x 37-3/8 x 37-3/8	Condensate Connection (inch):	1
Net Weight (lb):	60	Sound Pressure (H/M/L) (dBA):	47/44/40
Ext. Static Pressure (Rated/Max) (inWg):	/	Sound Power Level (dBA):	

Submittal Data Sheet

3.0-Ton 4-Way Blow Ceiling-Suspended - FXUQ36PVJU

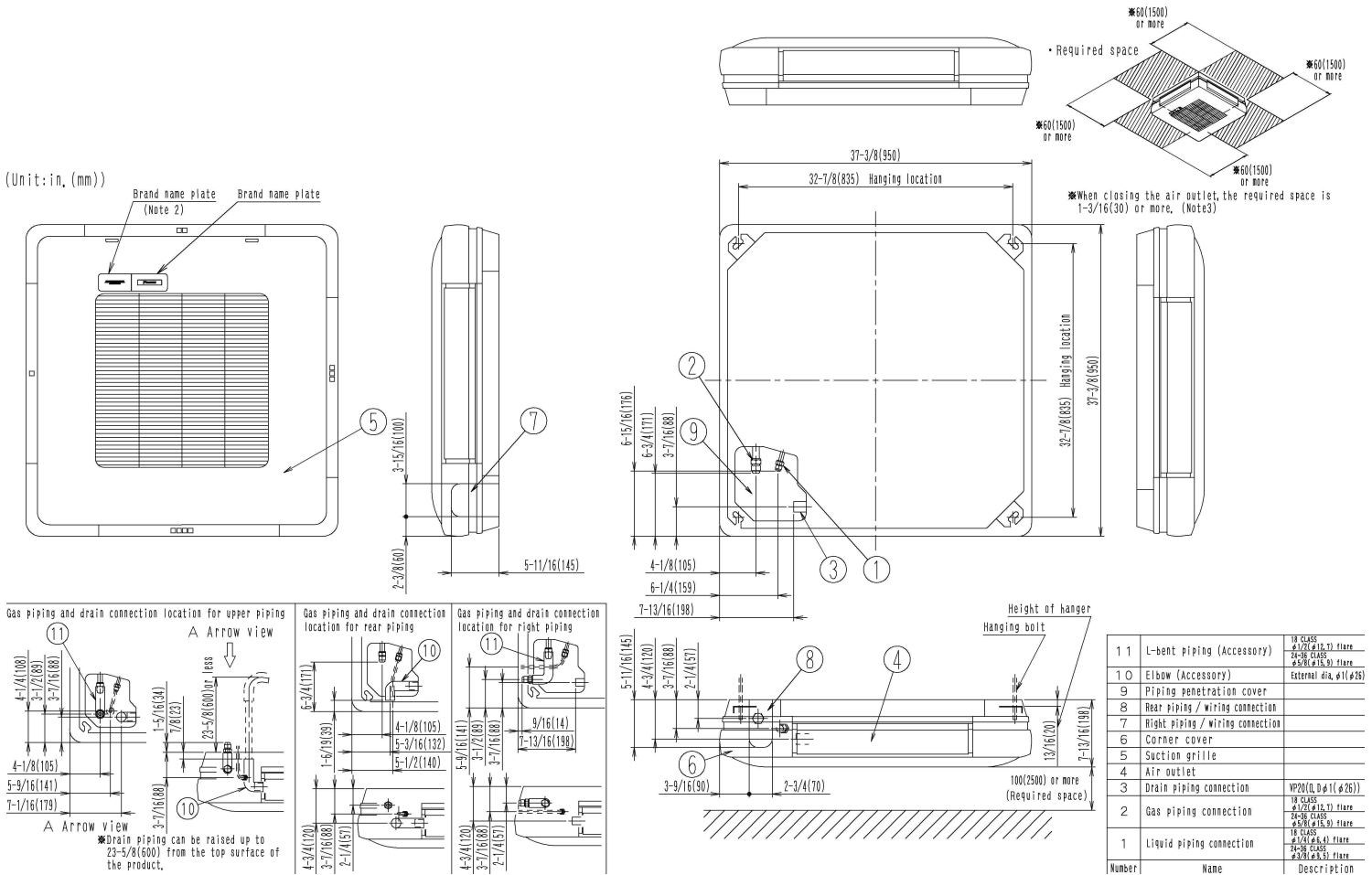
Project: Coppell FS#3

Submitted by: Dan Torres of DXS INC FOR CENTRAL TEXAS on 8/23/2017

Submitted to: No Engineer Name Specified

Tags: AHU-12, AHU-13

DIMENSIONAL DRAWING





Submittal Data Sheet

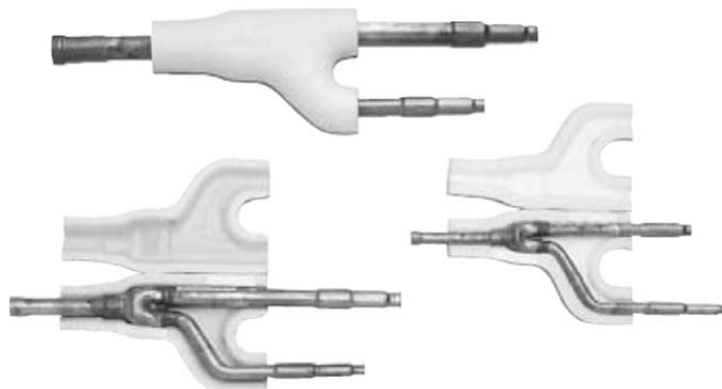
2 PIPE REFNET JOINT
KHRP26A22T9

DESCRIPTION

REFNET Joints provide a factory designed option for the branching within the refrigerant piping network.

FEATURES

- Engineered for uniform refrigerant flow and refrigerant distribution.
- Designed to help smoother oil return.
- Flexible installation; vertical or $\pm 30^\circ$ from horizontal.
- Designed with tube diameters (I.D. and O.D.) required for VRV system installations.
- Pre-formed clamshell style insulation^{1,2} for cleaner and reliable application.
- Accounts for 1.5 ft equivalent pipe length calculation.



Picture for REFERENCE ONLY



SPECIFICATIONS

Piping Material:	ACR Copper Alloy C12200	
Ports / Branches:	2	
Included in Branch Kit:	1 pcs. – Gas Side	
	1 pcs. - Liquid Side	
Kit Name:	GAS SIDE	LIQUID SIDE
Reducer Fittings:	1 pcs – I.D. Ø 3/4 1 pcs – I.D. Ø 7/8	-
Insulation Material:	Polypropylene	Expandable Polystyrene (EPS)
Insulation Quantity (per Joint):	1 pcs.	1 pcs.
Indoor Unit Capacity Index:	< 72	
Pipe Connection Size:	Refer to Dimensional Drawing and VRV Express Calculations	

Notes:

- 1) In applications where the REFNET kits are installed in an environment requiring fire-rated materials to be used, it is necessary for the installer to obtain from a third party supplier and to utilize, for insulation, fire-rated materials that meet all applicable building codes and other requirements. The Factory-provided insulation that is supplied with the REFNET kit should be discarded in a manner meeting all applicable laws.
- 2) The insulation of the refrigerant piping must be reinforced based on the environment of the installation. Otherwise dew may condensate on the surface of insulation.

Daikin North America LLC, 5151 San Felipe, Suite 500, Houston TX, 77056

www.daikinac.com www.daikincomfort.com

(Daikin's products are subject to continuous improvements. Daikin reserves the right to modify product design, specifications and information in this data sheet without notice and without incurring any obligations).

Submittal Data Sheet

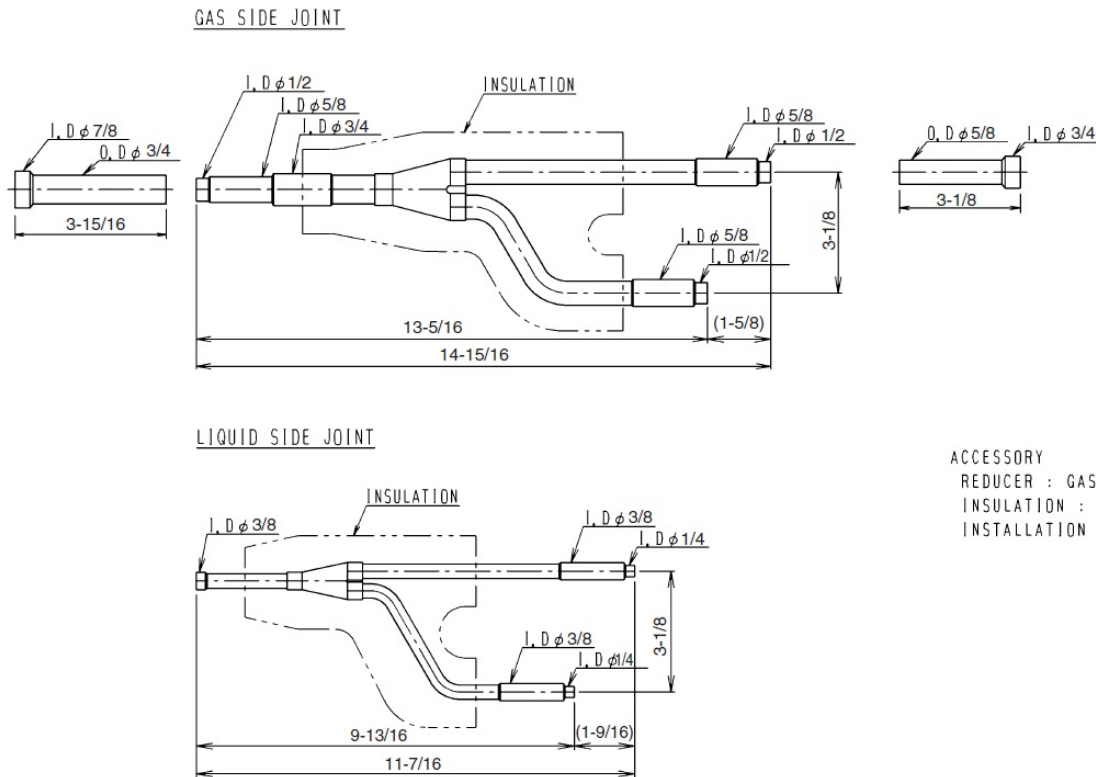
2 PIPE REFNET JOINT

KHRP26A22T9

DIMENSIONAL DRAWING

KHRP26A22T9

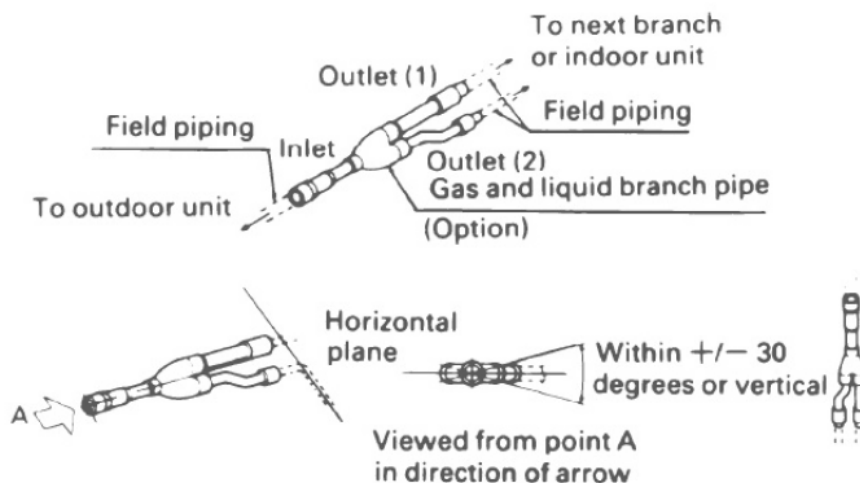
Unit: in



ACCESSORY
REDUCER : GAS SIDE : 2pcs
INSULATION : 2pcs
INSTALLATION MANUAL

C: D3K05234A

TYPICAL INSTALLATION DRAWING



Daikin North America LLC, 5151 San Felipe, Suite 500, Houston TX, 77056

www.daikinac.com www.daikincomfort.com

(Daikin's products are subject to continuous improvements. Daikin reserves the right to modify product design, specifications and information in this data sheet without notice and without incurring any obligations).



Submittal Data Sheet

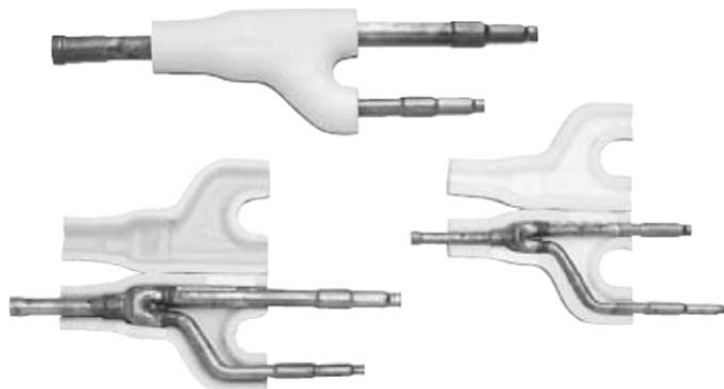
2 PIPE REFNET JOINT
KHRP26A33T9

DESCRIPTION

REFNET Joints provide a factory designed option for the branching within the refrigerant piping network.

FEATURES

- Engineered for uniform refrigerant flow and refrigerant distribution.
- Designed to help smoother oil return.
- Flexible installation; vertical or $\pm 30^\circ$ from horizontal.
- Designed with tube diameters (I.D. and O.D.) required for VRV system installations.
- Pre-formed clamshell style insulation^{1,2} for cleaner and reliable application.
- Accounts for 1.5 ft equivalent pipe length calculation.



Picture for REFERENCE ONLY



SPECIFICATIONS

Piping Material:	ACR Copper Alloy C12200	
Ports / Branches:	2	
Included in Branch Kit:	1 pcs. – Gas Side	
	1 pcs. - Liquid Side	
Kit Name:	GAS SIDE	LIQUID SIDE
Reducer Fittings:	1 pcs – I.D. Ø 3/4 1 pcs – I.D. Ø 7/8 1 pcs – I.D. Ø 1	-
Insulation Material:	Polypropylene	Expandable Polystyrene (EPS)
Insulation Quantity (per Joint):	1 pcs.	1 pcs.
Indoor Unit Capacity Index:	$72 \leq x < 111$	
Pipe Connection Size:	Refer to Dimensional Drawing and VRV Express Calculations	

Notes:

- 1) In applications where the REFNET kits are installed in an environment requiring fire-rated materials to be used, it is necessary for the installer to obtain from a third party supplier and to utilize, for insulation, fire-rated materials that meet all applicable building codes and other requirements. The Factory-provided insulation that is supplied with the REFNET kit should be discarded in a manner meeting all applicable laws.
- 2) The insulation of the refrigerant piping must be reinforced based on the environment of the installation. Otherwise dew may condensate on the surface of insulation.

Daikin North America LLC, 5151 San Felipe, Suite 500, Houston TX, 77056
www.daikinac.com www.daikincomfort.com

(Daikin's products are subject to continuous improvements. Daikin reserves the right to modify product design, specifications and information in this data sheet without notice and without incurring any obligations).



Submittal Data Sheet

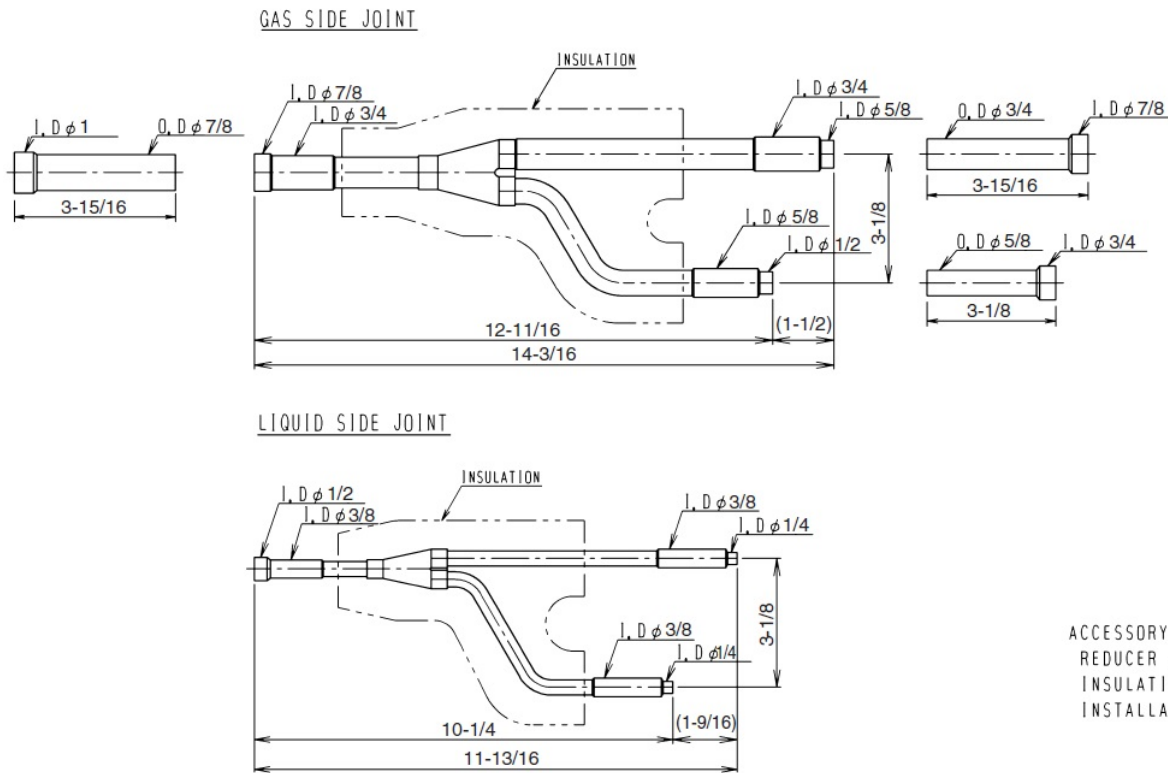
2 PIPE REFNET JOINT

KHRP26A33T9

DIMENSIONAL DRAWING

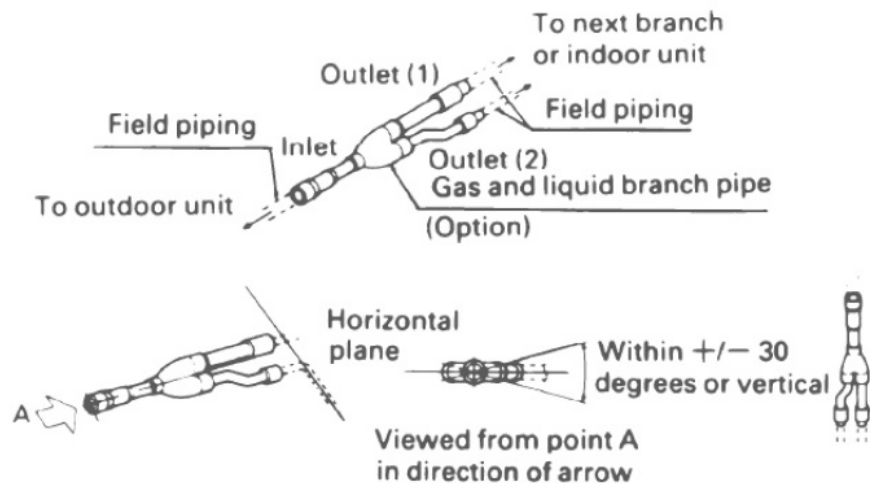
KHRP26A33T9

Unit: in.



C: D3K05235B

TYPICAL INSTALLATION DRAWING



Daikin North America LLC, 5151 San Felipe, Suite 500, Houston TX, 77056

www.daikinac.com www.daikincomfort.com

(Daikin's products are subject to continuous improvements. Daikin reserves the right to modify product design, specifications and information in this data sheet without notice and without incurring any obligations).



Submittal Data Sheet

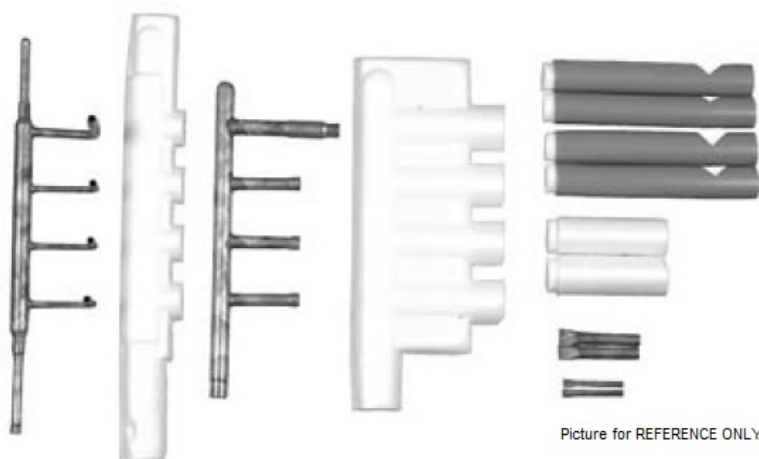
2 PIPE REFNET HEADER WITH 4 PORTS
KHRP26M22H9

DESCRIPTION

REFNET Headers provide a factory designed option for the branching within the refrigerant piping network.

FEATURES

- Engineered to uniform refrigerant flow and refrigerant distribution.
- Designed to help smoother oil return.
- Designed with tube diameters (I.D. and O.D.) required for VRV system installations.
- Pre-formed clamshell style insulation^{1,2} for cleaner and reliable application.
- Accounts for 3.3 ft equivalent pipe length calculation.



SPECIFICATIONS

Piping Material:	ACR Copper Alloy C12200	
Ports / Branches:	4	
Included in Branch Kit:	1 pcs. – Gas Side	
	1 pcs. – Liquid Side	
Kit Name:	GAS SIDE	LIQUID SIDE
Reducer Fittings:	2 pcs – I.D. Ø 5/8 1 pcs – I.D. Ø 7/8	2 pcs – I.D. Ø 3/8
Insulation Material:	Polypropylene	
Insulation Quantity (per Header):	1 pcs.	1 pcs.
Insulation Quantity (per piping):	2 pcs.	4 pcs
Indoor Unit Capacity Index:	< 72 (Max 4 indoor units)	
Pipe Connection Size:	Refer to Dimensional Drawing and VRV Express Calculations	

Notes:

- In applications where the REFNET kits are installed in an environment requiring fire-rated materials to be used, it is necessary for the installer to obtain from a third party supplier and to utilize, for insulation, fire-rated materials that meet all applicable building codes and other requirements. The Factory-provided insulation that is supplied with the REFNET kit should be discarded in a manner meeting all applicable laws.
- The insulation of the refrigerant piping must be reinforced based on the environment of the installation. Otherwise dew may condensate on the surface of insulation.

Daikin North America LLC, 5151 San Felipe, Suite 500, Houston TX, 77056
www.daikinac.com www.daikincomfort.com

(Daikin's products are subject to continuous improvements. Daikin reserves the right to modify product design, specifications and information in this data sheet without notice and without incurring any obligations).



Submittal Data Sheet

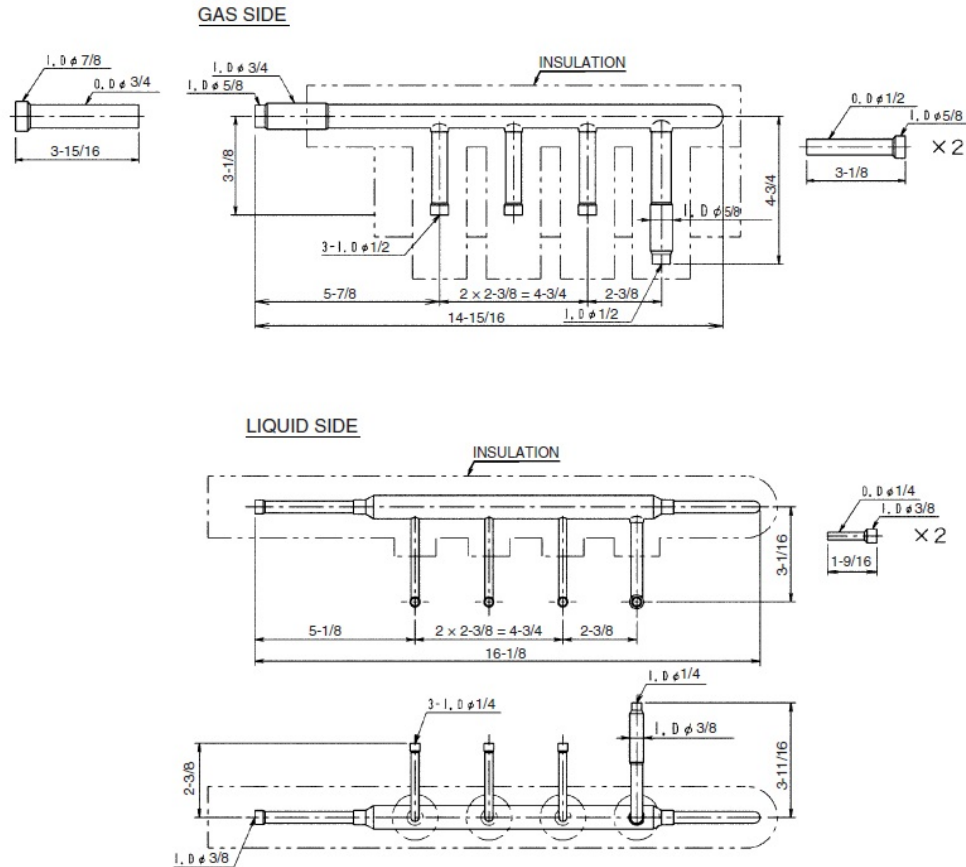
2 PIPE REFNET HEADER WITH 4 PORTS

KHRP26M22H9

DIMENSIONAL DRAWING

KHRP26M22H9

Unit: in.



ACCESSORY
REDUCER : GAS SIDE : 3pcs
LIQUID SIDE : 2pcs
PLUGGING TUBE : 1 set
INSULATION : 1set
INSTALLATION MANUAL

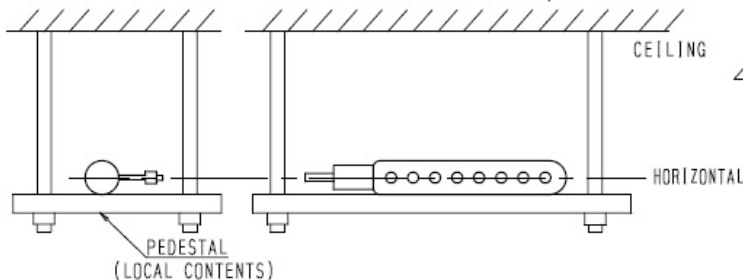
JC: D3K03629C

TYPICAL INSTALLATION DRAWING

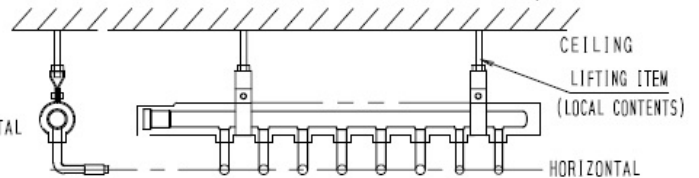
INSTALLATION PRECAUTIONS

- Do not apply extra force on the piping part. The brazed part may be damaged and it may result in gas leakage.

GAS SIDE HEADER • Place the header on the pedestal and install it so that it is horizontal.



LIQUID SIDE HEADER • Suspend the header from the ceiling, and be sure to install it so that the outlet/inlet pipings at the header indoor unit side are horizontal at the lower side as shown below.



Daikin North America LLC, 5151 San Felipe, Suite 500, Houston TX, 77056

www.daikinac.com www.daikincomfort.com

(Daikin's products are subject to continuous improvements. Daikin reserves the right to modify product design, specifications and information in this data sheet without notice and without incurring any obligations).



Submittal Data Sheet

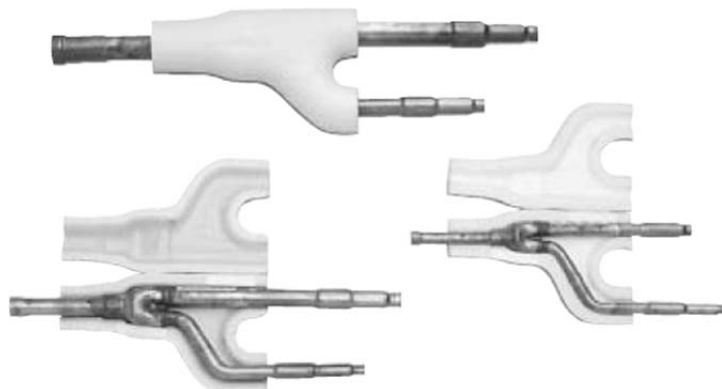
2 PIPE REFNET JOINT
KHRP26M72TU9

DESCRIPTION

REFNET Joints provide a factory designed option for the branching within the refrigerant piping network.

FEATURES

- Engineered for uniform refrigerant flow and refrigerant distribution.
- Designed to help smoother oil return.
- Flexible installation; vertical or $\pm 30^\circ$ from horizontal.
- Designed with tube diameters (I.D. and O.D.) required for VRV system installations.
- Pre-formed clamshell style insulation^{1,2} for cleaner and reliable application.
- Accounts for 1.5 ft equivalent pipe length calculation.



Picture for REFERENCE ONLY



SPECIFICATIONS

Piping Material:	ACR Copper Alloy C12200	
Ports / Branches:	2	
Included in Branch Kit:	1 pcs. – Gas Side	
	1 pcs. - Liquid Side	
Kit Name:	GAS SIDE	LIQUID SIDE
Reducer Fittings:	1 pcs – I.D. Ø 5/8 1 pcs – I.D. Ø 7/8 1 pcs – I.D. Ø 1 1 pcs – I.D. Ø 1-1/8	1 pcs – I.D. Ø 5/8 1 pcs – I.D. Ø 3/4
Insulation Material:	Polypropylene	Expandable Polystyrene (EPS)
Insulation Quantity (per Joint):	1 pcs.	1 pcs.
Indoor Unit Capacity Index:	$111 \leq x < 246$	
Pipe Connection Size:	Refer to Dimensional Drawing and VRV Express Calculations	

Notes:

- 1) In applications where the REFNET kits are installed in an environment requiring fire-rated materials to be used, it is necessary for the installer to obtain from a third party supplier and to utilize, for insulation, fire-rated materials that meet all applicable building codes and other requirements. The Factory-provided insulation that is supplied with the REFNET kit should be discarded in a manner meeting all applicable laws.
- 2) The insulation of the refrigerant piping must be reinforced based on the environment of the installation. Otherwise dew may condensate on the surface of insulation.

Daikin North America LLC, 5151 San Felipe, Suite 500, Houston TX, 77056

www.daikinac.com www.daikincomfort.com

(Daikin's products are subject to continuous improvements. Daikin reserves the right to modify product design, specifications and information in this data sheet without notice and without incurring any obligations).

Submittal Data Sheet

2 PIPE REFNET JOINT

KHRP26M72TU9

DIMENSIONAL DRAWING

KHRP26M72TU9

Unit: in.

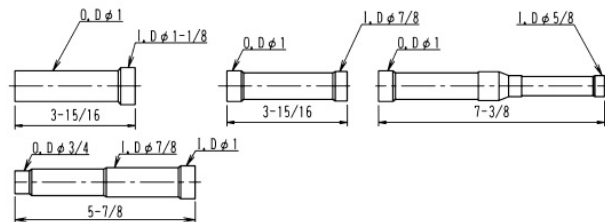
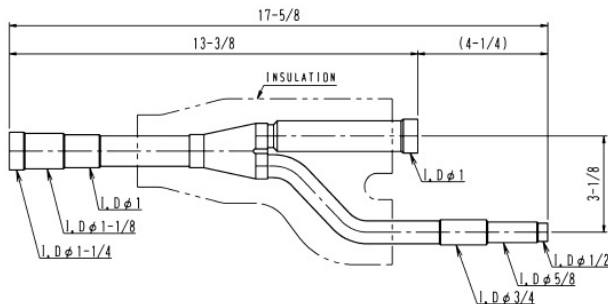
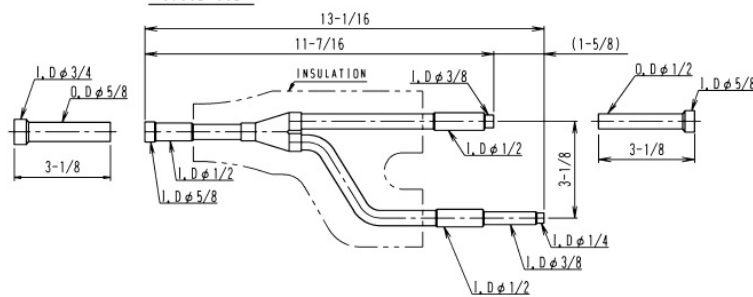
ACCESSORIES

REDUCER: 4 pcs. (FOR GAS SIDE)

: 2 pcs. (FOR LIQUID SIDE)

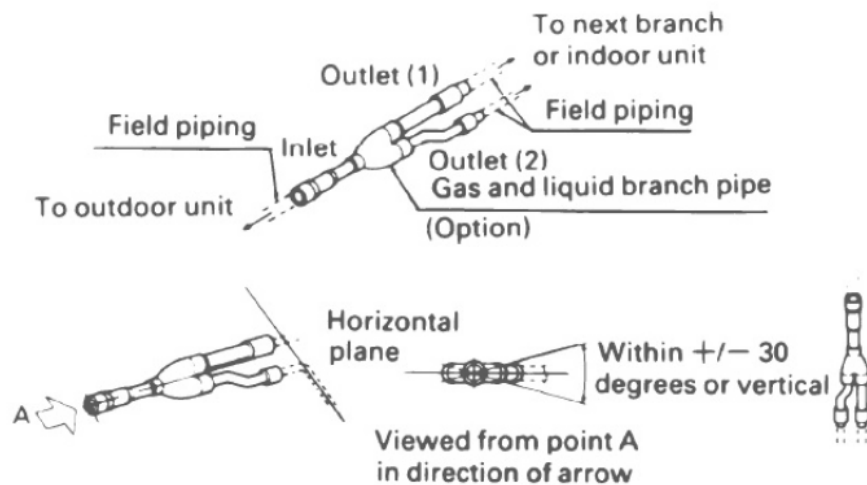
INSULATION: 2 pcs.

INSTALLATION MANUAL:1 sheet

GAS SIDELIQUID SIDE

D3K04887A

TYPICAL INSTALLATION DRAWING



Daikin North America LLC, 5151 San Felipe, Suite 500, Houston TX, 77056

www.daikinac.com www.daikincomfort.com

(Daikin's products are subject to continuous improvements. Daikin reserves the right to modify product design, specifications and information in this data sheet without notice and without incurring any obligations).

Project Name:

Location:

Engineer:

Submitted to:

Submitted by:

Reference:

Approval:

Date:

Construction:

Unit #:

Drawing #:

Model Compatibility:

For use with the following VRV indoor unit models: FXAQ, FXDQ, FXEQ, FXFQ, FXHQ, FXLQ, FXMQ, FXMQ_MF, FXNQ, FXTQ, FXUQ, FXZQ

For use with the following Daikin SkyAir indoor unit models: FAQ, FBQ, FCQ, FHQ, FTQ

Specifications:

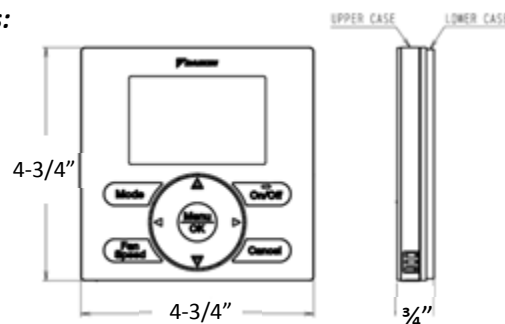
Model	BRC1E73
Description	Navigation Remote Controller
Maximum Connections	16 indoor units
Communication Wire	18AWG-2, No polarity Stranded, Non-shielded
Total Wiring Length	1,640 ft. (500 m)
Communication Protocol	Daikin Proprietary P1P2 protocol
Power	16VDC supplied by Indoor unit (1.58VA maximum)
Comfort Setpoint Range	60 to 90 °F (16 to 32 °C)
Setback Setpoint Range	40 to 95 °F (5 to 35 °C)
Operating Temp Range	14 to 122 °F (-10 to 50 °C)
Operating Humidity Range	75% or less (RH) (w/o condensation)
Dimensions (WxHxD)	4.72x4.72x0.75 inch (120x120x19 mm)
Weight (Mass)	0.42 lbs. (0.19 kg)

Product Image:

1 of 3 display options –
Detailed display shown



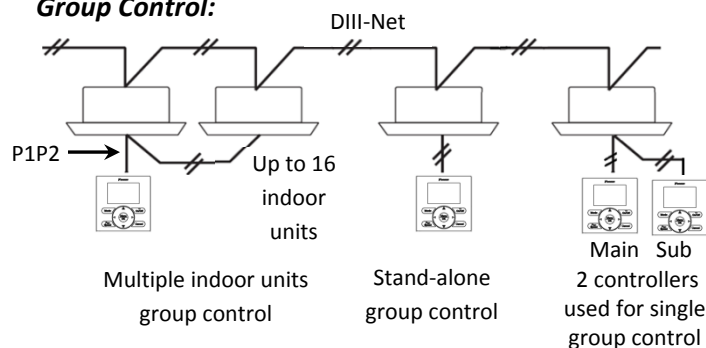
Dimensions:



Features/Benefits:

- Up to 16 indoor units are controllable within one group
- Within one group, up to 2 Navigation Remote Controllers can be used, one as a main and one as a sub
- Backlit LCD displays in English, Spanish or French
- Temperature sensor built-in with configurable offset
- Display of Temperature and Setpoint in 1°F / °C increments
- Three configurable display options: Detailed, Standard and Simple
- Dual setpoints (independent cooling and heating setpoints) with configurable minimum setpoint differential or Single Setpoint (occupied period)
- Setpoint range limit for cooling and heating modes
- Independent cooling and heating setback setpoints (unoccupied period)
- Auto changeover control with configurable Primary changeover at setpoint $\pm 1^\circ$ F with guard timer

Group Control:



Daikin North America LLC, 5151 San Felipe Suite 500, Houston, TX 77056

Daikin North America LLC Controls Engineering Department Generated Submittal Data

www.daikinac.com

(Daikin's products are subject to continuous improvements. Daikin reserves the right to modify product design, specifications and information in this data sheet without notice and without incurring any obligations)



Submittal Data Sheet

BRC1E73 - Navigation Remote Controller

Project Name:

Location:

Engineer:

Submitted to:

Submitted by:

Reference:

Approval:

Date:

Construction:

Unit #:

Drawing #:

11. Airflow – Individual air flow direction, dual airflow and auto draft prevention (prevents air blowing directly on occupants)*
12. Built-in 7, 5+2, 5+1+1 and 1 (Everyday) schedules with up to 5 actions per day with independent cooling and heating or setback setpoints
13. Automatic Setback by occupancy sensor*
14. Automatic Off by occupancy sensor*
15. Configuration for Self-cleaning filter panel**
16. Automatic adjustment for Daylight Savings Time (DST)
17. 48 hour clock/calendar battery backup (protects schedule timing in cases of short term power loss from indoor unit)
18. Real-time monitoring of system malfunctions with immediate display of unit in error and error code
19. The buttons on the remote controller are selectable by locking out the unwanted buttons
20. The operation modes can be restricted to provide only the desired mode(s) of operation
21. Display can be configured to show “Off” and room temperature only when indoor unit is turned off
22. To prevent unwanted changes, fan speed selection and display may be hidden
23. Auto off timer configurable in 10 minute increments (range 30-180 minutes)
24. Can be used to replace earlier versions of remote controllers

* Available for FXFQ_TVJU and FXUQ_PVJU indoor units

**Available for FXTQ_TVJU indoor units

Auto changeover:

Automatic changeover is available for Heat Pump system and Heat Recovery systems. The setpoint for cooling and heating are configurable with a minimum differential of 0 to 7°F or single setpoint. The changeover is automatically controlled to happen in either of the following two cases:

Case 1: Changeover at the primary changeover temperature after the guard timer expires.

1. In default, the primary changeover setpoint is 1°F above cooling setpoint or 1°F below heating setpoint, which is configurable between 1°F – 4°F.
2. In default, the guard timer is 60 minutes, which is selectable among 15, 30, 60 (default) or 90 minutes.
3. The initiation of guard timer is built in to help prevent frequent changeover which may cause energy loss.

Case 2: Changeover at the secondary changeover temperature.

1. In default, the secondary changeover temperature is 1°F above the primary changeover temperature for cooling or 1°F below the primary changeover temperature for heating, which is configurable between 1°F – 4°F.
2. Case 2 will happen while the guard time is active in case 1.

Daikin North America LLC, 5151 San Felipe Suite 500, Houston, TX 77056

Daikin North America LLC Controls Engineering Department Generated Submittal Data

www.daikinac.com

(Daikin's products are subject to continuous improvements. Daikin reserves the right to modify product design, specifications and information in this data sheet without notice and without incurring any obligations)

Project Name:

Location:

Engineer:

Submitted to:

Submitted by:

Reference:

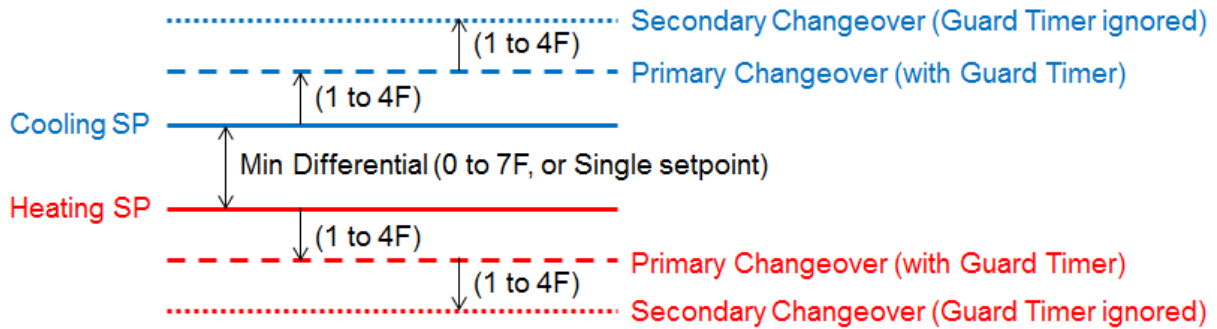
Approval:

Date:

Construction:

Unit #:

Drawing #:









Face Decal Options:

Face decal options to hide unnecessary buttons

1. The face decal is designed to adhere to the BRC1E faceplate
2. Hidden buttons can be used/accessed by service personnel without removing the face decal due to its flexibility



Used with	Single Setpoint mode			Dual Setpoint mode		
	BRC1E72RM	BRC1E72RF	BRC1E72RMF	BRC1E72RM2	BRC1E72RF2	BRC1E72RMF2
Model						
On/Off	X	X	X	X	X	X
Mode	X		X	X		X
Fan		X	X		X	X
Up, Down	X	X	X	X	X	X
Left, Right				X	X	X
Menu/Ok						
Cancel						

Daikin North America LLC, 5151 San Felipe Suite 500, Houston, TX 77056

Daikin North America LLC Controls Engineering Department Generated Submittal Data

www.daikinac.com

(Daikin's products are subject to continuous improvements. Daikin reserves the right to modify product design, specifications and information in this data sheet without notice and without incurring any obligations)



Submittal Data Sheet

BRC1E73 - Navigation Remote Controller

Project Name: _____

Location: _____

Engineer: _____

Submitted to: _____

Submitted by: _____

Reference: _____

Approval: _____

Date: _____

Construction: _____

Unit #: _____

Drawing #: _____

Documentation:

Documentation available on www.daikincity.com or www.daikinac.com

- Installation Manual
- Operation Manual
- Submittal
- Guide Specifications

Daikin North America LLC, 5151 San Felipe Suite 500, Houston, TX 77056

Daikin North America LLC Controls Engineering Department Generated Submittal Data

www.daikinac.com

(Daikin's products are subject to continuous improvements. Daikin reserves the right to modify product design, specifications and information in this data sheet without notice and without incurring any obligations)



Submittal Data Sheet

4.0 Ton VRV-IVS Heat Pump - RXTQ48TAVJU

Project: Coppell FS#3

Submitted by: Dan Torres of DXS INC FOR CENTRAL TEXAS on 8/23/2017

Submitted to: No Engineer Name Specified

FEATURES

- Variable Refrigerant Temperature (VRT) technology allows VRV IV S series to deliver improved efficiencies and year round comfort
- Improved efficiencies with SEER values up to 18.0 and HSPF values up to 10.0
- Engineered with highly reliable Daikin Swing compressors
- All inverter compressors to increase efficiency and avoid starting current rush
- Can provide heating down to -4°F
- Added safety with optional auto changeover to auxiliary heat
- Easier installation with over 60% weight reduction compared to VRV III S

BENEFITS

- Single-phase technology enables installation in light commercial and residential applications
- Broader diversity with up to 9 indoor units connectivity
- Space saving compact design
- Design flexibility with long piping lengths up to 984ft total and 49ft vertical separation between indoor units
- Designed with reduced MOP to optimize installation costs
- Backed by best in class 10-years Parts Limited Warranty and 10-years Replacement Compressor Limited Warranty*



VRV IV





Submittal Data Sheet

4.0 Ton VRV-IVS Heat Pump - RXTQ48TAVJU

Project: Coppell FS#3

Submitted by: Dan Torres of DXS INC FOR CENTRAL TEXAS on 8/23/2017

Submitted to: No Engineer Name Specified

PERFORMANCE

Outdoor Unit Model No.	RXTQ48TAVJU	Outdoor Unit Name:	4.0 Ton VRV-IVS Heat Pump
Type:	Heat Pump		
Rated Cooling Conditions:	Indoor (°F DB/DB): 80 / 67 Ambient (°F DB/WB): 95 / 75	Rated Heating Conditions:	Indoor (°F DB/WB): 70 / 60 Ambient (°F DB/WB): 47 / 43
Rated Piping Length(ft):	25		
Rated Height Difference (ft):			
Rated Cooling Capacity (Btu/hr):	45,500	Rated Heating Capacity (Btu/hr):	49,500
Cooling Input Power (kW):	4.85	Heating Input Power (kW):	4.00
EER (Non-Ducted/Ducted):	10.30 / 9.40	Heating COP (Non-Ducted/Ducted):	/
SEER (Non-Ducted/Ducted):	18.00 / 16.00	HSPF (Non-Ducted/Ducted):	10.0 / 9.0
Max/Min Cooling Capacity (Btu/hr):	/	Max/Min Heating Capacity (Btu/hr):	

OUTDOOR UNIT DETAILS

Power Supply (V/Hz/Ph):	208-230 / 60 / 1	Compressor Stage:	Inverter
Power Supply Connections:		Capacity Control Range (%):	14 - 100
Min. Circuit Amps MCA (A):	29.1	Airflow Rate (H) (CFM):	2682
Max Overcurrent Protection (MOP) (A):	35	Gas Pipe Connection (inch):	5/8
Max Starting Current MSC(A):		Liquid Pipe Connection (inch):	3/8
Rated Load Amps RLA(A):	19	Sound Pressure (H) (dBA):	58
Dimensions (HxWxD) (in):	39 x 37 x 12-5/8	Sound Power Level (dBA):	76
Net Weight (lb):	176		

Submittal Data Sheet

4.0 Ton VRV-IVS Heat Pump - RXTQ48TAVJU

Project: Coppell FS#3

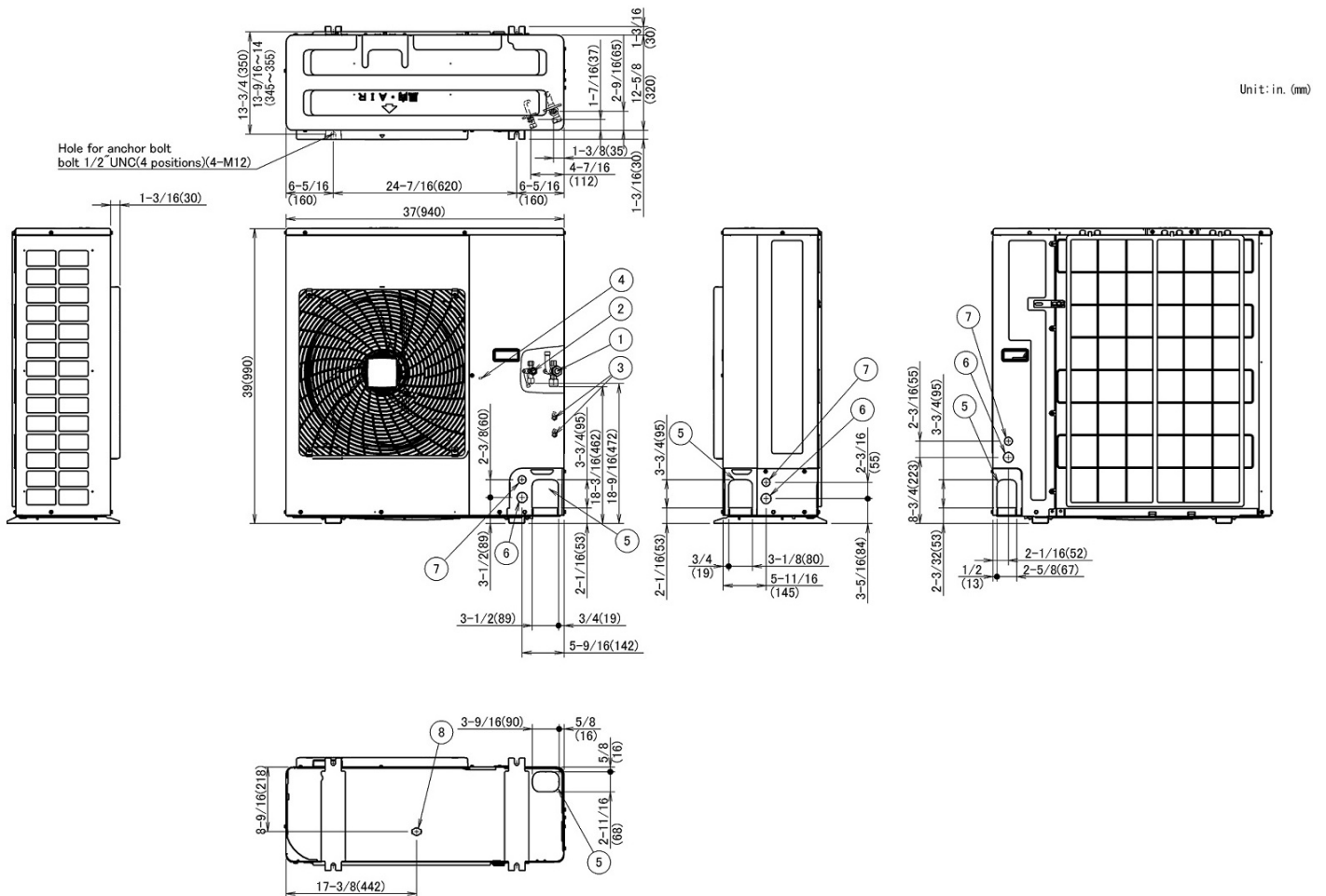
Submitted by: Dan Torres of DXS INC FOR CENTRAL TEXAS on 8/23/2017

Submitted to: No Engineer Name Specified

SYSTEM DETAILS

Refrigerant Type:	R-410A	Cooling Operation Range (°F DB):	23 - 122
Holding Refrigerant Charge (lbs):	7.5	Heating Operation Range (°F WB):	-4 - 60
Additional Charge (lb/ft):		Max. Pipe Length (Vertical) (ft):	98
Pre-charge Piping (Length) (ft):		Cooling Range w/Baffle (°F DB):	-
Max. Pipe Length (Total) (ft):	984	Heating Range w/Baffle (°F WB):	-
Max Height Separation (Ind to Ind ft):			

DIMENSIONAL DRAWING





Submittal Data Sheet

4.0-Ton 100% Outside Air Processing Unit - FXMQ48MFVJU

Project: Coppell FS#3

Submitted by: Dan Torres of DXS INC FOR CENTRAL TEXAS on 8/23/2017

Submitted to: No Engineer Name Specified

FEATURES

- Service access from below
- Greater design flexibility with a capacity range extended to 96 MBH
- Improved ductwork and filtration flexibility with high CFM and ESP capabilities of up to 0.88" W.G.
- 100% OA capable with discharge air temperature control
- Optional MERV 8 and 13 filters
- Standard Limited Warranty: 10-year warranty on compressor and all parts

BENEFITS

- Can connect to heat pump or heat recovery VRV





Submittal Data Sheet

4.0-Ton 100% Outside Air Processing Unit - FXMQ48MFVJU

Project: Coppell FS#3

Submitted by: Dan Torres of DXS INC FOR CENTRAL TEXAS on 8/23/2017

Submitted to: No Engineer Name Specified

PERFORMANCE

Indoor Unit Model No.	FXMQ48MFVJU	Indoor Unit Name:	4.0-Ton 100% Outside Air Processing Unit
Type:	Ducted	Rated Cooling Conditions:	Indoor (°F DB/WB): 80 / 67 Ambient (°F DB/WB): 95 / 75
Rated Cooling Capacity (Btu/hr):	48,000	Rated Heating Conditions:	Indoor (°F DB/WB): 70 / 60 Ambient (°F DB/WB): 47 / 43
Sensible Capacity (Btu/hr):		Rated Piping Length(ft):	
Cooling Input Power (kW):	0.360	Rated Height Separation (ft):	
Rated Heating Capacity (Btu/hr):	30,000		
Heating Input Power (kW):	0.36		

INDOOR UNIT DETAILS

Power Supply (V/Hz/Ph):	208-230 / 60 / 1	Airflow Rate (H) (CFM):	635
Power Supply Connections:	L1, L2, Ground	Moisture Removal (Gal/hr):	
Min. Circuit Amps MCA (A):	2.1	Gas Pipe Connection (inch):	5/8
Max Overcurrent Protection (MOP) (A):	15	Liquid Pipe Connection (inch):	3/8
Dimensions (HxWxD) (in):	18-1/2 x 29-1/4 x 43-5/16	Condensate Connection (inch):	1
Net Weight (lb):	190	Sound Pressure (H) (dBA):	43
Ext. Static Pressure (Rated/Max) (inWg):	0.88" / 0.88"	Sound Power Level (dBA):	

Submittal Data Sheet

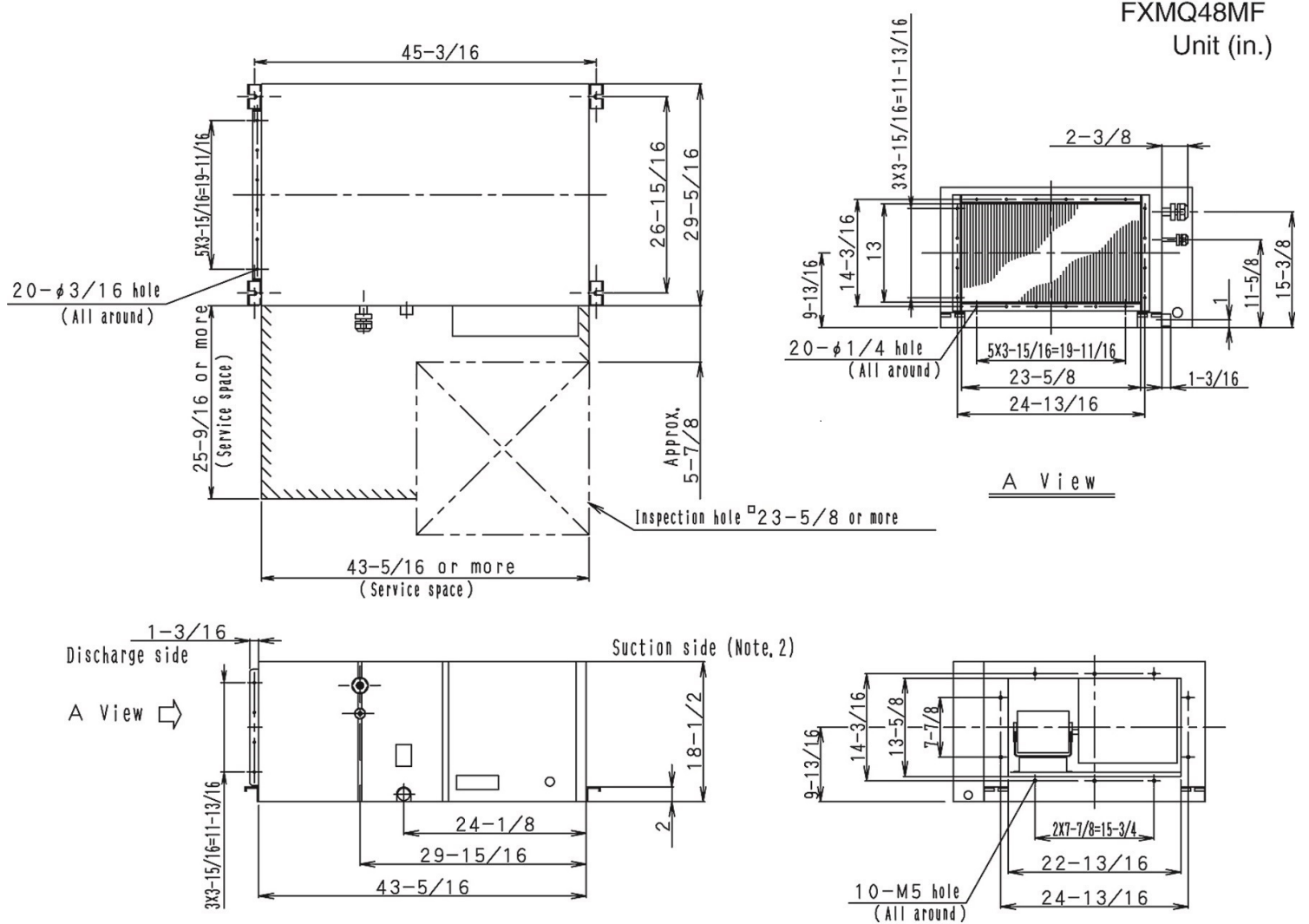
4.0-Ton 100% Outside Air Processing Unit - FXMQ48MFVJU

Project: Coppell FS#3

Submitted by: Dan Torres of DXS INC FOR CENTRAL TEXAS on 8/23/2017

Submitted to: No Engineer Name Specified

DIMENSIONAL DRAWING



Ductwork Opening:

Model No.	Supply Opening		Return Opening	
	Height	Width	Height	Width
FXMQ48MFVJU	14-3/16"	24-3/16"	14-3/16"	**22-13/16"

(Note: Opening dimension base on Fixing Hole Center)

(**: Dimensions to cutout opening)



Submittal Data Sheet

energy recovery ventilator 300 - VAM300GVJU

Project: Coppell FS#3

Submitted by: Dan Torres of DXS INC FOR CENTRAL TEXAS on 8/23/2017

Submitted to: No Engineer Name Specified

FEATURES

- Superior performance with a high efficiency fan and the capability for use in a wide range of climates (5 to 122°FDB and 80% RH or less)
- Interlocked simultaneous operation with VRV indoor units
- Pre-cooling/heating control function to delay the start of ventilation during air conditioner start-up for higher energy savings
- Unique functions such as independent operation, interlock with other HVAC systems and automatic night purge to reduce cooling loads and increase energy savings
- Standard Limited Warranty: 10-year warranty on compressor and all parts





Submittal Data Sheet

energy recovery ventilator 300 - VAM300GVJU

Project: Coppell FS#3

Submitted by: Dan Torres of DXS INC FOR CENTRAL TEXAS on 8/23/2017

Submitted to: No Engineer Name Specified

PERFORMANCE

Indoor Unit Model No.	VAM300GVJU	Indoor Unit Name:	energy recovery ventilator 300
Type:		Rated Cooling Conditions:	Indoor (°F DB/WB): / Ambient (°F DB/WB): 5 / 122
Rated Cooling Capacity (Btu/hr):		Rated Heating Conditions:	Indoor (°F DB/WB): / Ambient (°F DB/WB): 5 / 122
Sensible Capacity (Btu/hr):		Rated Piping Length(ft):	
Cooling Input Power (kW):	0.310	Rated Height Separation (ft):	
Heating Input Power (kW):	0.31		

INDOOR UNIT DETAILS

Power Supply (V/Hz/Ph):	208-230 / / 1	Airflow Rate (H/M/L) (CFM):	300/300/170
Power Supply Connections:	L1, L2, Ground	Moisture Removal (Gal/hr):	
Min. Circuit Amps MCA (A):	1.6	Gas Pipe Connection (inch):	
Max Overcurrent Protection (MOP) (A):	15	Liquid Pipe Connection (inch):	
Dimensions (HxWxD) (in):	12-1/16 x 34-5/8 x 31-1/2	Condensate Connection (inch):	
Net Weight (lb):	71	Sound Pressure (H/L) (dBA):	37/34
Ext. Static Pressure (Rated/Max) (inWg):	0.6 / 0.64	Sound Power Level (dBA):	26



Submittal Data Sheet

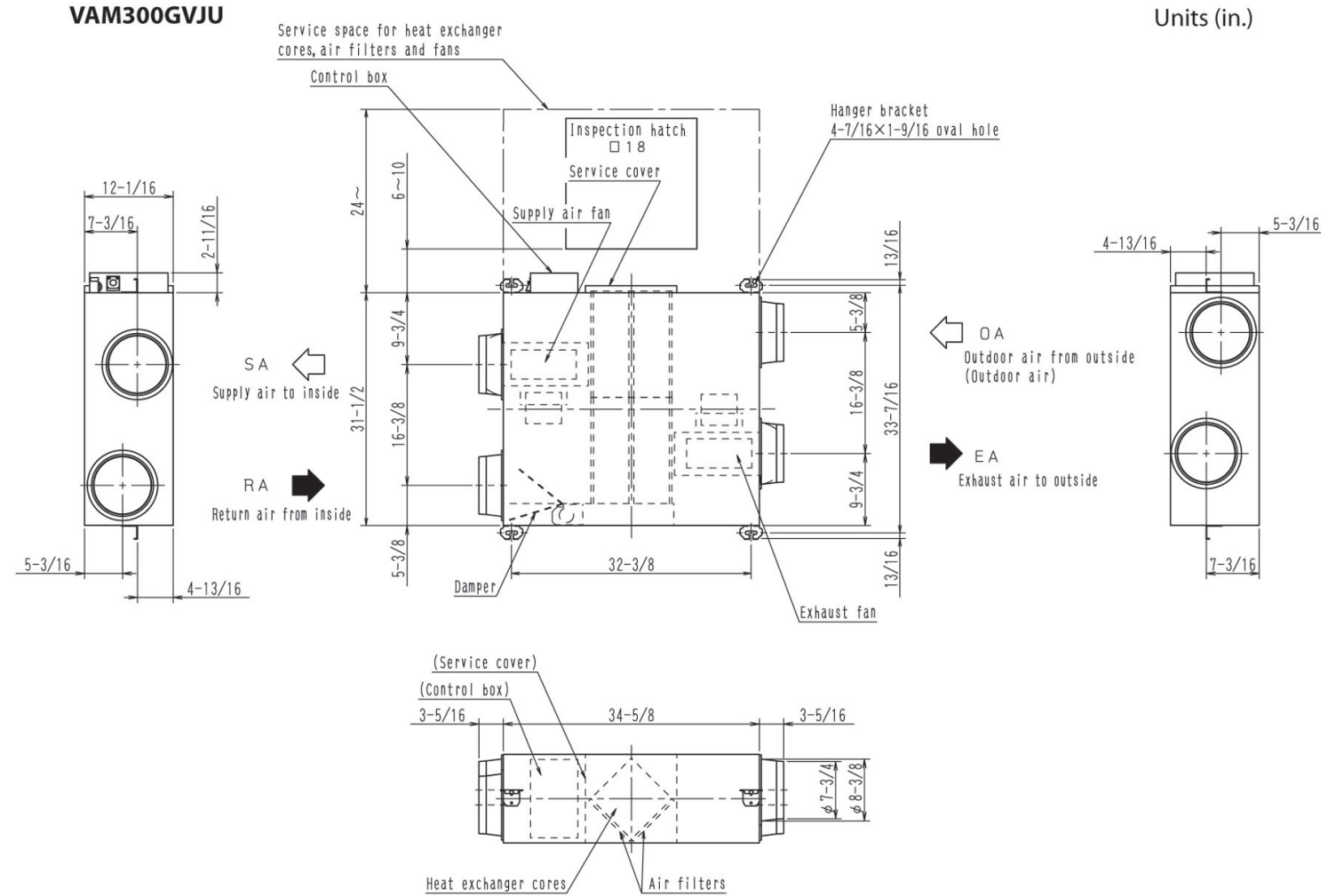
energy recovery ventilator 300 - VAM300GVJU

Project: Coppell FS#3

Submitted by: Dan Torres of DXS INC FOR CENTRAL TEXAS on 8/23/2017

Submitted to: No Engineer Name Specified

DIMENSIONAL DRAWING





Submittal Data Sheet

0.5-Ton Slim Duct Built-in Concealed Ceiling Unit - FXDQ07MVJU

Project: Coppell FS#3

Submitted by: Dan Torres of DXS INC FOR CENTRAL TEXAS on 8/23/2017

Submitted to: No Engineer Name Specified

FEATURES

- The slim height, at only 7-7/8", makes it suitable for most of the applications where attic / bulkhead space is limited
- With a sound level as low as 29 dBA, these systems are among the quietest on the market
- Washable filter included
- Integral condensate pump with up to 23-5/8" lift
- Blends unobtrusively with any interior decor; only the suction and discharge grills are visible
- Standard Limited Warranty: 10-year warranty on compressor and all parts





Submittal Data Sheet

0.5-Ton Slim Duct Built-in Concealed Ceiling Unit - FXDQ07MVJU

Project: Coppell FS#3

Submitted by: Dan Torres of DXS INC FOR CENTRAL TEXAS on 8/23/2017

Submitted to: No Engineer Name Specified

PERFORMANCE

Indoor Unit Model No.	FXDQ07MVJU	Indoor Unit Name:	0.5-Ton Slim Duct Built-in Concealed Ceiling Unit
Type:	Ducted	Rated Cooling Conditions:	Indoor (°F DB/WB): 80 / 67 Ambient (°F DB/WB): 95 / 75
Rated Cooling Capacity (Btu/hr):	7,500	Rated Heating Conditions:	Indoor (°F DB/WB): 70 / 60 Ambient (°F DB/WB): 47 / 43
Sensible Capacity (Btu/hr):	6,300	Rated Piping Length(ft):	
Cooling Input Power (kW):	0.090	Rated Height Separation (ft):	
Rated Heating Capacity (Btu/hr):	8,500		
Heating Input Power (kW):	0.07		

INDOOR UNIT DETAILS

Power Supply (V/Hz/Ph):	208-230 / 60 / 1	Airflow Rate (H/L) (CFM):	280/226
Power Supply Connections:	L1, L2, Ground	Moisture Removal (Gal/hr):	
Min. Circuit Amps MCA (A):	0.9	Gas Pipe Connection (inch):	1/2
Max Overcurrent Protection (MOP) (A):	15	Liquid Pipe Connection (inch):	1/4
Dimensions (HxWxD) (in):	7-7/8 x 27-9/16 x 24-7/16	Condensate Connection (inch):	1-1/32
Net Weight (lb):	51	Sound Pressure (H/L) (dBA):	33/29
Ext. Static Pressure (Rated/Max) (inWg):	0.12" / 0.12"	Sound Power Level (dBA):	

