

# Coppell Middle School East Football

Coppell, TX

## EQUIPMENT LAYOUT

### INCLUDES:

- Football
- Soccer

Electrical System Requirements: Refer to Amperage Draw Chart and/or the "Musco Control System Summary" for electrical sizing.

Installation Requirements: Results assume  $\pm 3\%$  nominal voltage at line side of the driver and structures located within 3 feet (1m) of design locations.

## EQUIPMENT LIST FOR AREAS SHOWN

QTY	LOCATION	SIZE	GRADE ELEVATION	MOUNTING HEIGHT	Luminaires			QTY / POLE
					TYPE	WATTAGE	TYPE	
4	F1-F4	70'	-	15'	TLC-LED-675	675	TLC-LED-1150	2
4				20'	TLC-LED-1150	1150		10
					TOTALS			48

## SINGLE LUMINAIRE AMPERAGE DRAW CHART

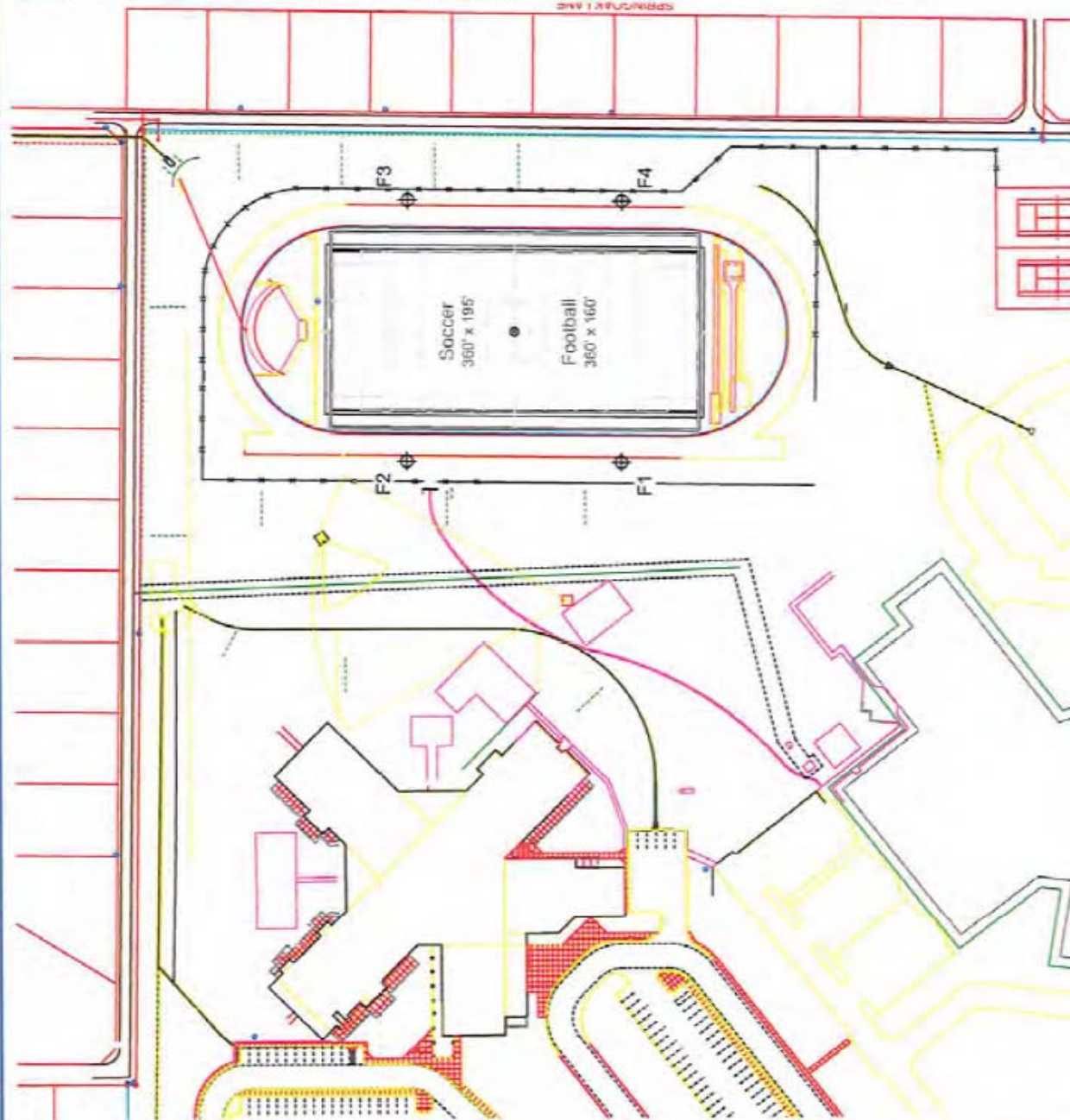
Ballast Specifications (See min power factor)		Line Amperage Per Luminaire (in amperes)							
Single Phase Voltage	208	220	240	277	347	380	480		
	100	100	100	100	100	100	100		
TLC-LED-1150	7.0	6.6	6.1	5.2	4.2	3.8	3.0		
Other									



We Make It Happen.

Not to be reproduced in whole or part without the written consent of Musco Sports Lighting, LLC. ©1981, 2017 Musco Sports Lighting, LLC.

## EQUIPMENT LAYOUT



Pole location(s) + dimensions are relative to 0,0 reference point(s)



SCALE IN FEET 1 : 150



ENGINEERED DESIGN By: Clayton Ternaat • File #187841A • 24-Aug-17

# Coppell Middle School East Football Coppell, TX

GRID SUMMARY	
Name:	Football
Size:	360' x 160'
Spacing:	30.0' x 30.0'
Height:	3.0' above grade

ILLUMINATION SUMMARY	
MAINTAINED HORIZONTAL FOOTCANDLES	
Entire Grid	
Guaranteed Average:	50
Scan Average:	52.10
Maximum:	65
Minimum:	44
Avg / Min:	1.18
Guaranteed Max / Min:	2
Max / Min:	1.48
UG (adjacent pts):	1.22
CU:	0.65
No. of Points:	72
LUMINAIRE INFORMATION	
Color / CRI:	5700K - 75 CRI
Luminaire Output:	121,000 / 48,000 lumens
No. of Luminaires:	48
Total Load:	51.4 kW

Lumen Maintenance	
Luminaire Type	L80 hrs
TLC-LED-1150	>51,000
TLC-LED-675	>51,000

**Guaranteed Performance:** The ILLUMINATION described above is guaranteed per your Musco Warranty document and includes a 0.95 dirt depreciation factor.

**Field Measurements:** Individual field measurements may vary from computer-calculated predictions and should be taken in accordance with IESNA RP-6-15.

**Electrical System Requirements:** Refer to Amperage Draw Chart and/or the "Musco Control System Summary" for electrical sizing.

**Installation Requirements:** Results assume  $\pm 3\%$  nominal voltage at line side of the driver and structures located within 3 feet (3m) of design locations.

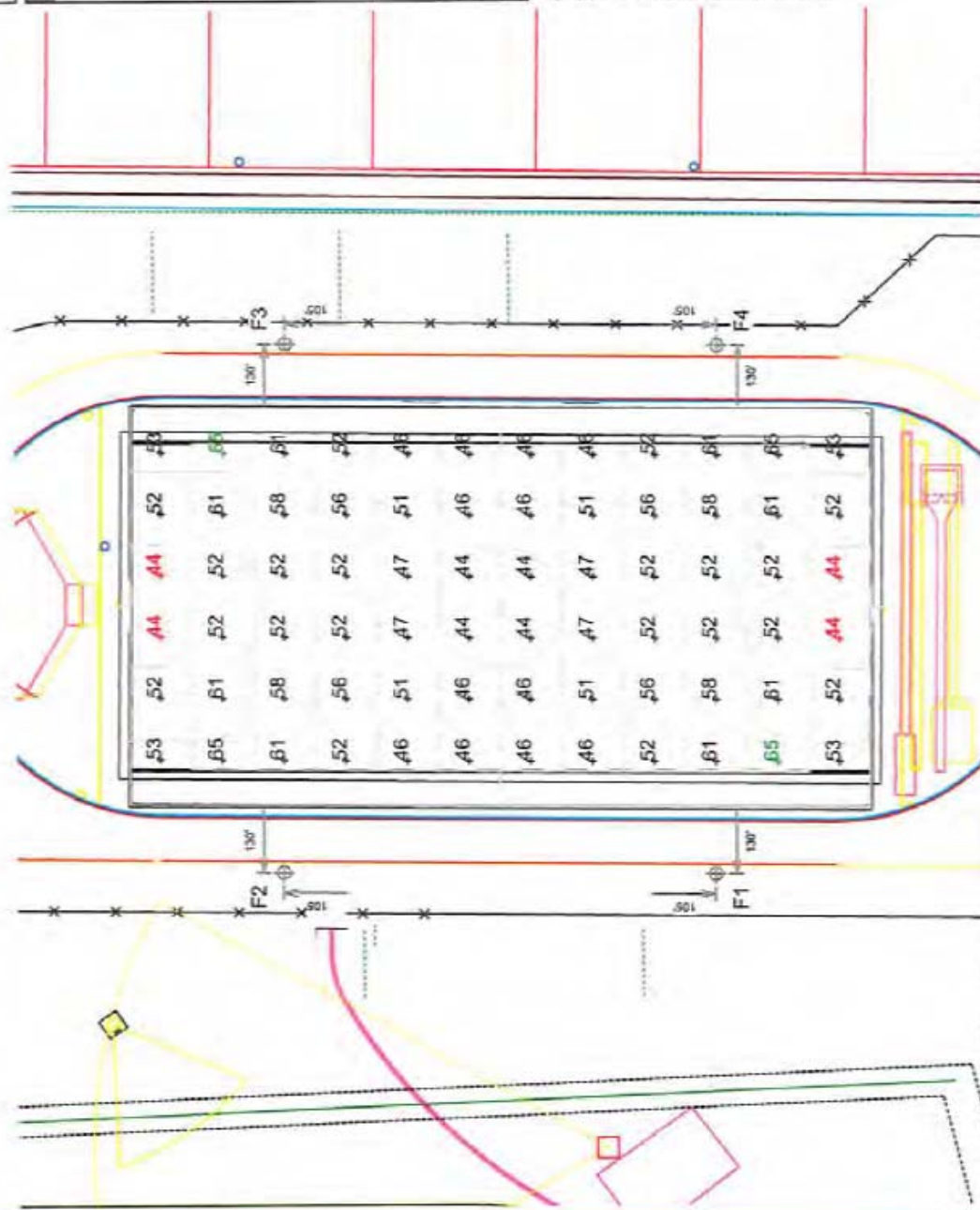


**We Make It Happen.**

Not to be reproduced in whole or part without the written consent of Musco Sports Lighting, LLC. ©1981, 2017 Musco Sports Lighting, LLC.

## ILLUMINATION SUMMARY

EQUIPMENT LIST FOR AREAS SHOWN					
QTY	LOCATION	SIZE	MOUNTING HEIGHT	Luminaires	
				TYPE	QTY / POLE
4	F1-F4	70'	15'	TLC-LED-675	2
4			70'	TLC-LED-1150	10
TOTALS					48



Pole location(s) + dimensions are relative to 0,0 reference point(s)

SCALE IN FEET 1 : 80  
0' 80' 160'

ENGINEERED DESIGN By: Clayton Ternaat • File #187841A • 24-Aug-17





## Coppell Middle School East Football

Coppell, TX

From Hometown to Professional

### Lighting System

Pole / Fixture Summary					
Pole ID	Pole Height	Mtg Height	Fixture Qty	Luminaire Type	Lead
F1-F4	70'	70'	10	TLC-LED-1150	11.50 kW
		15'	2	TLC-LED-675	1.35 kW
<b>4</b>			<b>48</b>		<b>51.40 kW</b>

Group Summary					
Group	Description	Avg Load	Max Load	Fixture Qty	
A	Football	51.4 kW	51.4 kW	48	

Fixture Type Summary					
Type	Source	Wattage	Lumens	L80	L70
TLC-LED-1150	LED 5700K - 75 CRI	1150W	121,000	>51,000	>51,000
TLC-LED-675	LED 5700K - 75 CRI	675W	48,000	--	--
					Quantity
					40
					8

### Light Level Summary

Calculation Grid Summary									
Grid Name	Calculation Metric	Avg	Min	Max	Max/Min	Groups	Fixture Qty		
Football	Horizontal Illuminance	52.1	44	65	1.48	A	48		
Property Line	Horizontal	0	0	0.05	281929.30	A	48		
Property Line	Max Candela (by Fixture)	1350	2.42	13026	5714.74	A	48		
Property Line	Max Vertical Illuminance Metric	0.02	0	0.22	19062.43	A	48		
Soccer	Horizontal Illuminance	51.8	40	69	1.73	A	48		



**We Make It Happen.**

Not to be reproduced in whole or part without the written consent of Musco Sports Lighting, LLC. ©1981, 2017 Musco Sports Lighting, LLC.

ENGINEERED DESIGN By: Clayton Teraat • File #187841A • 24-Aug-17

PROJECT SUMMARY



# Coppell Middle School East Football

Coppell, TX

GRID SUMMARY	
Name:	Property Line
Spacing:	30.0'
Height:	3.0' above grade

ILLUMINATION SUMMARY	
MAINTAINED MAX VERTICAL FOOTCANDLES	
Entire Grid	0.0213
Scan Average:	0.22
Maximum:	0.22
Minimum:	0.00
No. of Points:	52
LUMINAIRE INFORMATION	
Color / CRI:	5700K - 75 CRI
Luminaire Output:	121,000 / 48,000 lumens
No. of Luminaires:	48
Total Load:	51.4 kW
Lumen Maintenance	
Luminaire Type	L90 hrs
TLC-LED-1150	>51,000
TLC-LED-675	>51,000
L70 hrs	>51,000
L70 hrs	>51,000

**Guaranteed Performance:** The ILLUMINATION described above is guaranteed per your Musco Warranty document and includes a 0.95 dirt depreciation factor.

**Field Measurements:** Individual field measurements may vary from computer-calculated predictions and should be taken in accordance with IESNA RP-6-15.

**Electrical System Requirements:** Refer to Amperage Draw Chart and/or the "Musco Control System Summary" for electrical sizing.

**Installation Requirements:** Results assume  $\pm 3\%$  nominal voltage at line side of the driver and structures located within 3 feet (1m) of design locations.

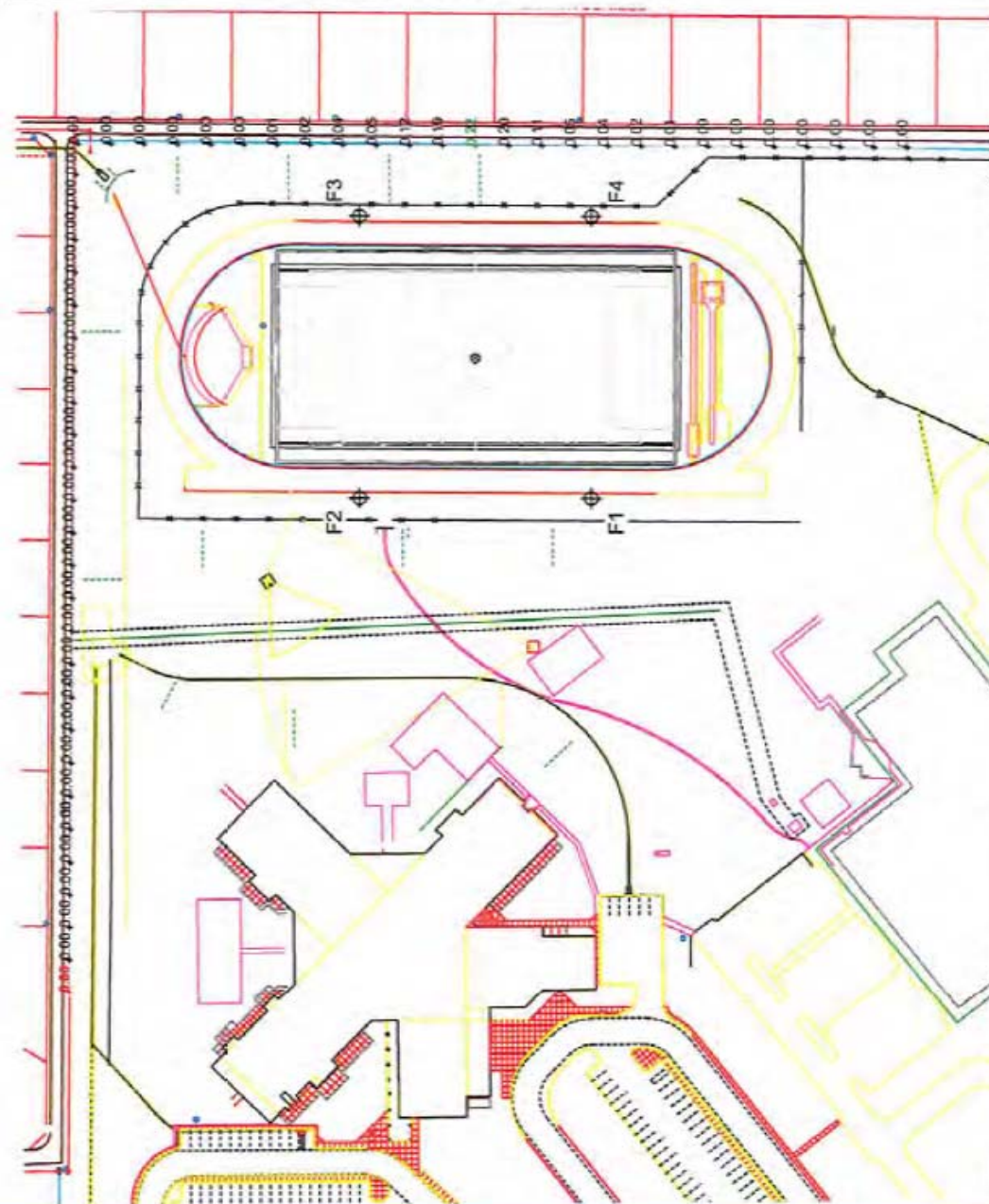


**We Make It Happen.**

Not to be reproduced in whole or part without the written consent of Musco Sports Lighting, LLC. ©1991, 2017 Musco Sports Lighting, LLC.

## ILLUMINATION SUMMARY

EQUIPMENT LIST FOR AREAS SHOWN					
QTY	LOCATION	SIZE	GRADE ELEVATION	MOUNTING HEIGHT	Luminaires
					TYPE
4	FL-14	70"	-	15'	TLC-LED-675
4				70'	TLC-LED-1150
4				TOTALS	48



Pole location(s) + dimensions are relative to 0.0 reference point(s)

SCALE IN FEET 1 : 150  
0 150 300

ENGINEERED DESIGN By: Clayton Ternaat • File #187841A • 24-Aug-17



# Coppell Middle School East Football Coppell, TX

## GRID SUMMARY

Name: Property Line  
Spacing: 30.0'  
Height: 3.0' above grade

## ILLUMINATION SUMMARY

MAINTAINED HORIZONTAL FOOTCANDLES  
Entire Grid

Scan Average: 0.0047

Maximum: 0.05

Minimum: 0.00

No. of Points: 52

LUMINAIRE INFORMATION

Color / CRI: 5700K - 75 CRI

Luminaire Output: 121,000 / 48,000 lumens

No. of Luminaires: 48

Total Load: 51.4 kW

Lumen Maintenance			
Luminaire Type	L90 hrs	L80 hrs	L70 hrs
TLC-LED-1150	>51,000	>51,000	>51,000
TLC-LED-675	---	---	---

Reported per TM-21-11. See luminaire datasheet for details.

**Guaranteed Performance:** The ILLUMINATION described

above is guaranteed per your Musco

Warranty document and includes a 0.95

dirt depreciation factor.

**Field Measurements:** Individual field measurements may vary from

computer-calculated predictions and should be taken

in accordance with IESNA RP-6-15.

**Electrical System Requirements:** Refer to Amperage

Draw Chart and/or the "Musco Control System Summary"

for electrical sizing.

**Installation Requirements:** Results assume  $\pm 3\%$

nominal voltage at line side of the driver and structures

located within 3 feet (3m) of design locations.

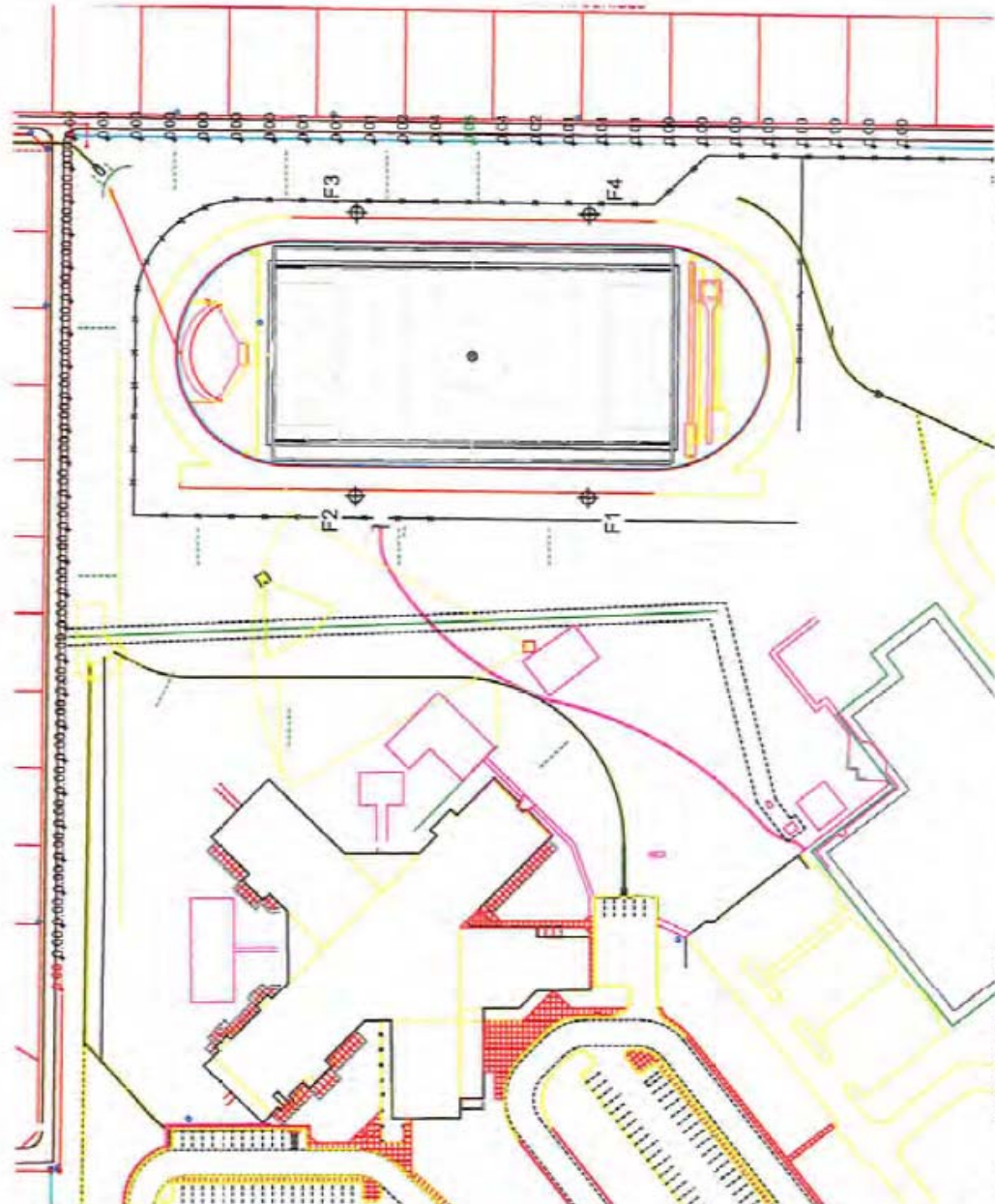


**We Make It Happen.**

Not to be reproduced in whole or part without the written consent of Musco Sports Lighting, LLC. ©1981, 2017 Musco Sports Lighting, LLC.

## ILLUMINATION SUMMARY

EQUIPMENT LIST FOR AREAS SHOWN									
Pole			Luminaires						
QTY	LOCATION	SIZE	GRADE ELEVATION	MOUNTING HEIGHT	LUMINAIRE TYPE	QTY / POLE	THIS GRID	OTHER GRIDS	
4	F1-F4	70'	-	15'	TLC-LED-675	2	2	0	
				70'	TLC-LED-1150	10	10	0	
4					TOTALS	48	48	0	



Pole location(s) + dimensions are relative to 0,0 reference point(s)

SCALE IN FEET 1 : 150  
0' 150' 300'

ENGINEERED DESIGN By: Clayton Ternaat • File #187841A • 24-Aug-17