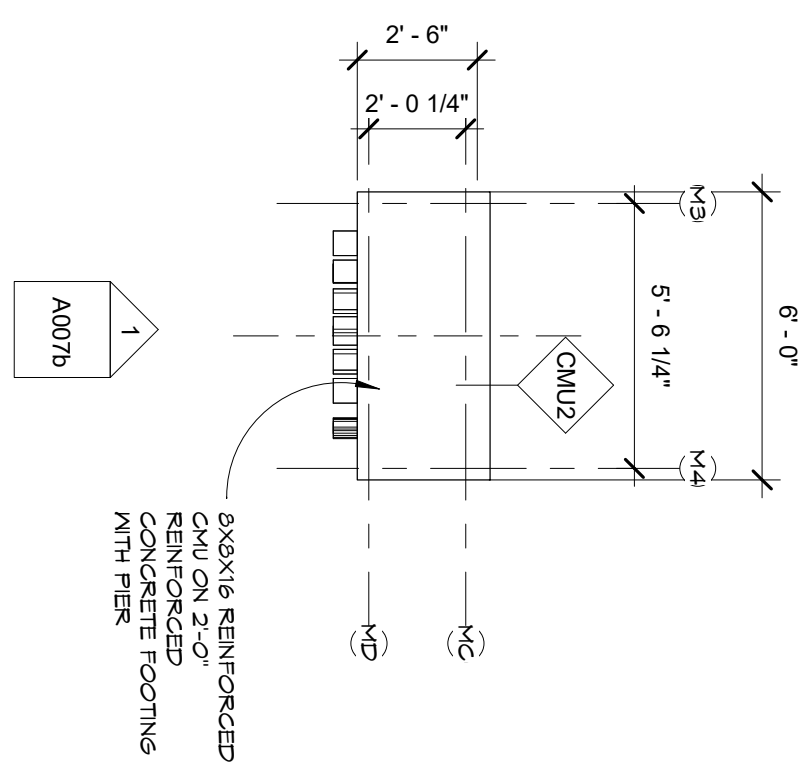
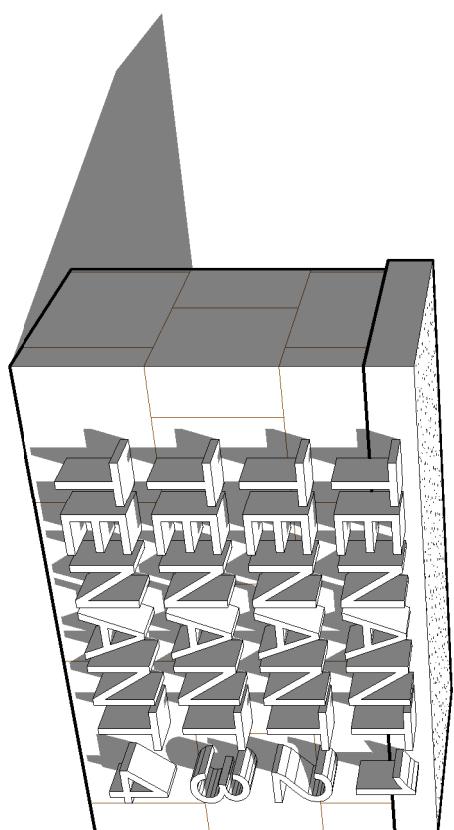


1 Front Elevation - Small Sign
1/4" = 1'-0"



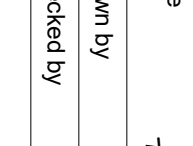
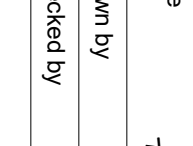
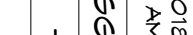


2 Small Sign Floor Plan
1/4" = 1'-0"

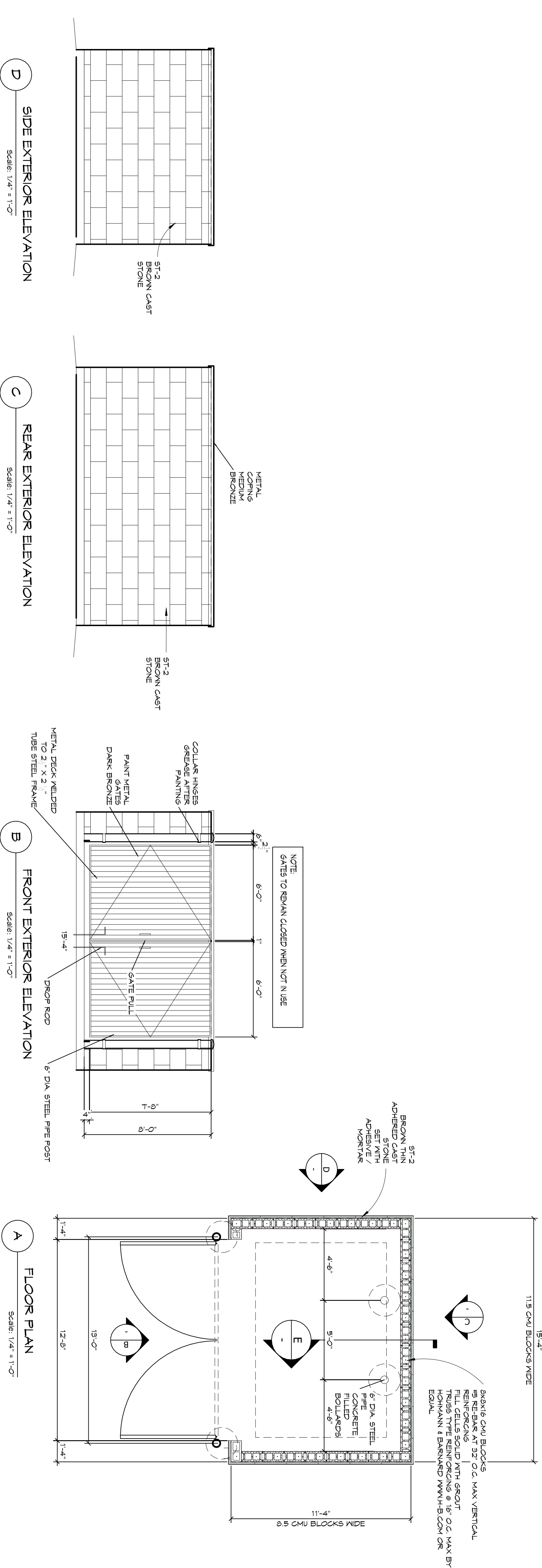


3D View-Small Sign

[illegible]

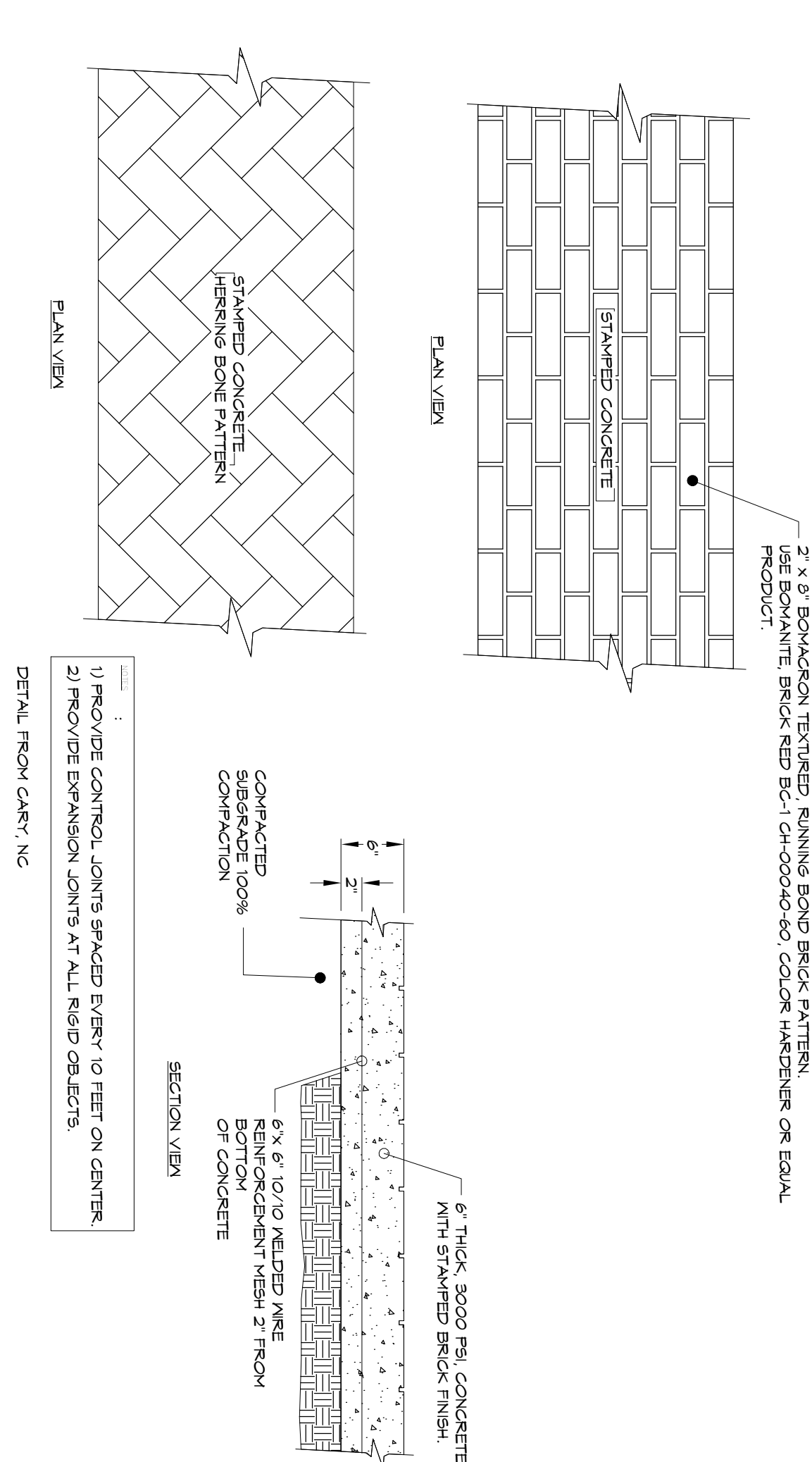
<p>Engineer:</p>	<p>Architect:</p>
<p>  EAST STAR DESIGN P.O. BOX 33 FORTNEY, TX 75726 USA (214) 465-1100 (972) 200-5740 Fax: (214) 465-1101 Architect@EastStarDesign.com TX Pm Reg. # BR 1755 </p>	<p>  EAST STAR DESIGN P.O. BOX 33 FORTNEY, TX 75726 USA (214) 465-1100 (972) 200-5740 Fax: (214) 465-1101 Architect@EastStarDesign.com TX Pm Reg. # BR 1755 </p>
<p>Sun Holdings</p> <p>Point Mest Development</p> <p>1-655 1 Bialline Coppell, TX</p>	<p>Monument Sign Small</p>
<p>Seal</p>	<p>  REGISTERED ARCHITECT STATE OF TEXAS 20011 6555 W. GURLEY FORTNEY, TX 75726 </p>
<p>Project number</p> <p>Date</p> <p>Drawn by</p> <p>Checked by</p> <p>Scale</p>	<p>140220</p> <p>5/6/2015</p> <p>7/15/24 AM</p> <p>GG</p> <p>-</p> <p>1/4" = 1'-0"</p>
<p>  REGISTERED ARCHITECT STATE OF TEXAS 20011 6555 W. GURLEY FORTNEY, TX 75726 </p>	<p>  REGISTERED ARCHITECT STATE OF TEXAS 20011 6555 W. GURLEY FORTNEY, TX 75726 </p>

1 Refuse Enclosure
1/4" = 1'-0"




2 Refuse Enclosure Section
3/4" = 1'-0"

3 Stamped Concrete
1" = 1'-0"



Revisions:		
No.	Description	Date

Engineer:	Architect:
<div><div><div><div>EST. 1981</div><div>SUN HOLDINGS</div></div></div><div><div>FORNEY, TX 75768 USA</div><div>(214) 465-1178 (972) 202-2840</div><div>Architect@sunholdings.com</div><div>TX Firm Reg # BR 1755</div></div></div>	
Sun Holdings - Phase III Three Point West Development 14635 1st Bellvue Coppell, TX	
Site Details	
Project number 140220-3	Date 4/16/2019
Drawn by GG	Checked by -
Scale As indicated	