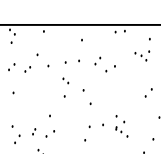



PLANT SCHEDULE

QUANT.	SYM.	BOTANICAL NAME/ COMMON NAME	MIN. CAL.	MIN. HEIGHT	MIN. SPREAD	CONTAINER/ ROOTBALL	SPACING	REMARKS
TREES								
5	QM	QUERCUS MUHLENBERGII/ CHINQUAPIN OAK	3"	15'	5'	65 GAL.	PER PLAN	SINGLE STRAIGHT TRUNK, FULL CANOPY, MATCHED
5	UP	ULMUS PARVIFOLIA/ LACEBARK ELM	3"	13'	5'	65 GAL.	PER PLAN	SINGLE STRAIGHT TRUNK, FULL CANOPY, MATCHED

SHRUBS / ORNAMENTAL GRASSES								
354	EF	EUONYMUS FORTUNEI 'COLORATUS'/ PURPLE WINTERCREEPER	NA	4"	6"	4" POTS	12" O.C.	FULL POTS, MIN. 5 RUNNERS PER POT
197	HP	HESPERALOE PARVIFLORA/ RED YUCCA	NA	12"	18"	5 GAL.	24" O.C.	
5	IN	ILEX X 'NELLIE R STEVENS'/ NELLIE R STEVENS HOLLY	NA	30"	24"	7 GAL.	48" O.C.	
1468	LM	LIRIOPE MUSCARI 'BIG BLUE'/ BIG BLUE LIRIOPE	NA	6"	6"	4" POTS	12" O.C.	
185	MP	MYRICA PUSILLA/ DWARF WAX MYRTLE	NA	30"	24"	7 GAL.	36" O.C.	

LAWN				
	CYNADON DACTYLON/ COMMON BERMUDA	SOLID SOD AREAS DESIGNATED ON PLANS		
SYM.	DESCRIPTION	COLOR	FINISH	REMARKS
	1/8" X 4" STEEL EDGING	METALLIC	GALVANIZED	

LANDSCAPE REQUIREMENTS

INTERIOR LANDSCAPING

A MINIMUM OF 10% OF THE TOTAL PARKING, LOADING, DRIVEWAY PAVEMENT AND ADJACENT SIDEWALK AREA SHALL BE INTERIOR LANDSCAPING.
TOTAL AREA = 23,288 SQ. FT.
2,239 SQ. FT. OF INTERIOR LANDSCAPE AREA IS REQUIRED
4,666 SQ. FT. OF INTERIOR LANDSCAPE AREA IS PROVIDED

12% OF TOTAL PARKING = NUMBER OF PARKING ISLANDS REQUIRED
22 TOTAL PARKING SPACES
3 PARKING ISLANDS REQUIRED
3 PARKING ISLANDS ARE PROVIDED

1 TREE REQUIRED PER 400 SQ. FT. OF INTERIOR LANDSCAPE AREA
TOTAL INTERIOR LANDSCAPE AREA = 4,666
12 TREES REQUIRED
16 TREES PROVIDED (9 NEW, 7 EXISTING)

1 TREE REQUIRED IN EACH PARKING ISLAND

PERIMETER LANDSCAPING

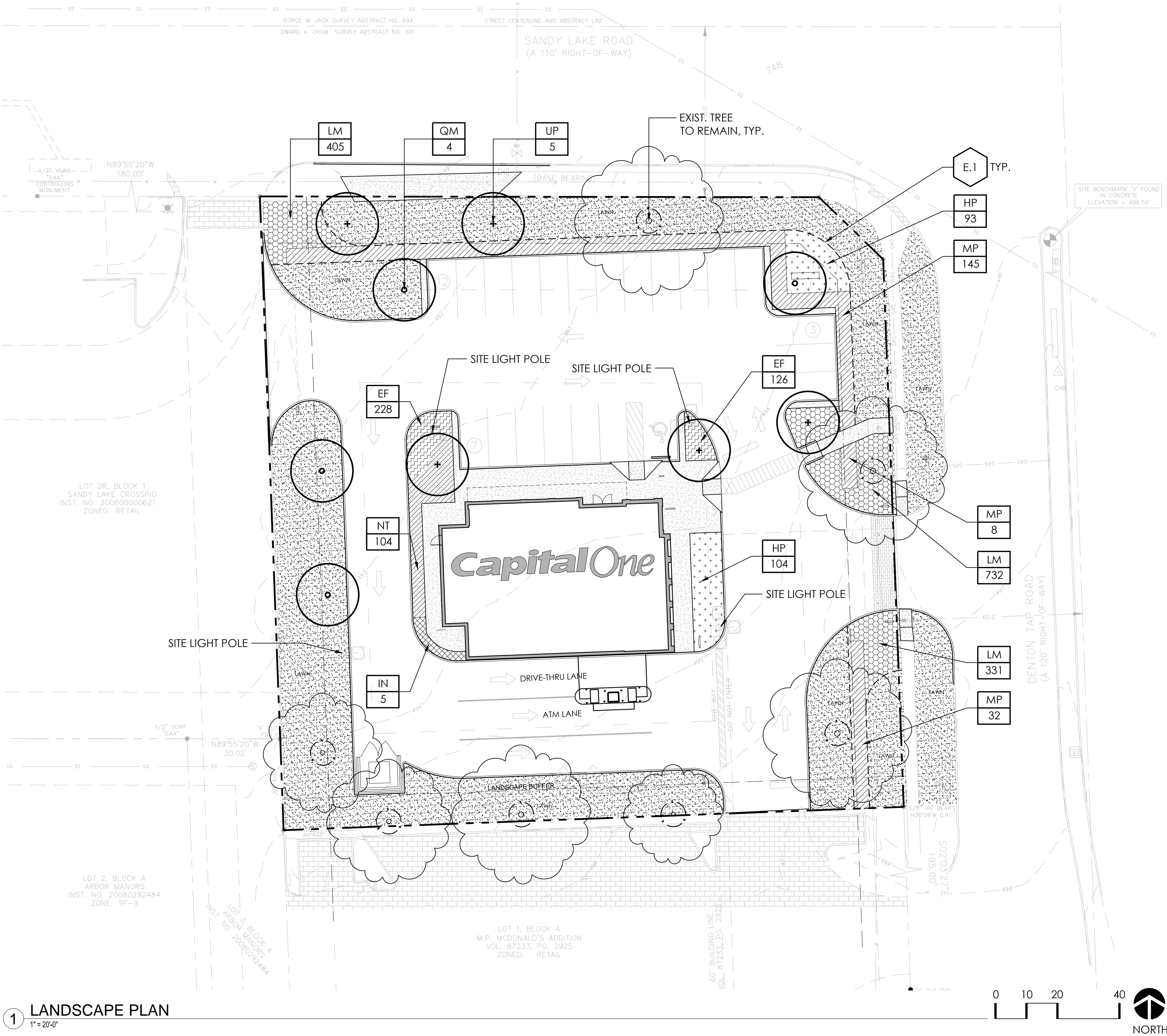
ALL PAVING MUST BE SCREENED FROM PUBLIC R.O.W.
SCREENING PROVIDED, MIN. 30" AT PLANTING, EVERGREEN

1 TREE REQUIRED PER 50 LINEAR FEET OF PERIMETER
TOTAL PERIMETER = 564 FT.
11 TREES REQUIRED
11 TREES PROVIDED (4 NEW, 7 EXISTING)

NON-VEHICULAR OPEN SPACE

15% OF LOT (MINUS BUILDING) MUST BE OPEN SPACE AND 50% SHALL BE IN THE FRONT YARD
TOTAL SITE AREA = 39,999 SQ. FT.
15% OF TOTAL SITE = 6,000 SQ. FT.
34% OF TOTAL SITE IS OPEN SPACE WITH 58% IN FRONT YARD

1 TREE IS REQUIRED PER 3,000 SQ. FT. OF OPEN SPACE
13 TREES ARE REQUIRED
14 TREES ARE PROVIDED (7 NEW, 7 EXISTING)



1 LANDSCAPE PLAN
1" = 20'-0"

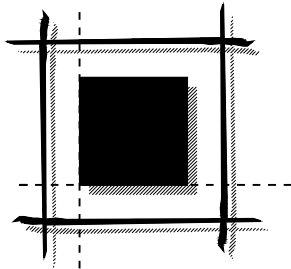
garthoffdesign
landscape architecture
5646 milton, suite 606
dallas, texas 75206
214.750.4727
www.garthoffdesign.com



Capital One
Design//Branch Cafe Care & Const.
299 Park Ave. 22nd floor
New York , NY. 10171

CAPITAL ONE BANK
COPPELL

SANDY LAKE CROSSING
LOT 3, BLOCK 1 ZONING: "R"
0.92 AC 39,999 SF
EDWARD A. CROW SURVEY, ABSTRACT NO. 301
105 SOUTH DENTON TAP ROAD
COPPELL, TEXAS 75019



LEVINSON • ALCOSER
ASSOCIATES, L. P.

1177 W. Loop South, Suite 900 Houston, Texas 77027
tel 713.787.0000 fax 713.850.8250

Architecture ■ Planning ■ Interior Design

DRAWN BY: CHECKED BY: REVISED BY:

REVISIONS

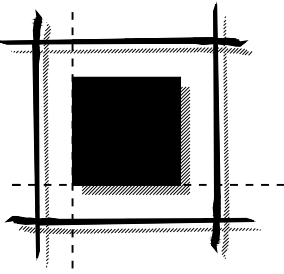
REV. BY:



Capital One
Design/Branch Cafe Care & Const.
299 Park Ave. 22nd floor
New York , NY. 10171

CAPITAL ONE BANK COPPELL

SANDY LAKE CROSSING
LOT 3, BLOCK 1 ZONING: "R"
0.92 AC 39,999 SF
EDWARD A. CROW SURVEY, ABSTRACT NO. 301
105 SOUTH DENTON TAP ROAD
COPPELL, TEXAS 75019



LEVINSON • ALCOSER
ASSOCIATES, L. P.

1177 W. Loop South, Suite 900 Houston, Texas 77027
tel 713.787.0000 fax 713.850.8250

Architecture ■ Planning ■ Interior Design

DRAWN BY: CHECKED BY: REVISED BY:

REVISIONS

REVISIONS	REV. BY:

Copyright 2018 Levinson Alcoser Assoc. Warning: This document is protected by U.S. Copyright Law Under Section 102 of the U.S. Copyright Act and the Architectural Works Copyright Protection Act of 1990. Unauthorized reproduction and distribution of this document or any portion of it, other than for use of this particular project, is prohibited and may result in severe civil and criminal penalties, and will be prosecuted to the maximum extent possible under the law.



08/06/18

LAALP Project Number: 2018-108.003

L000

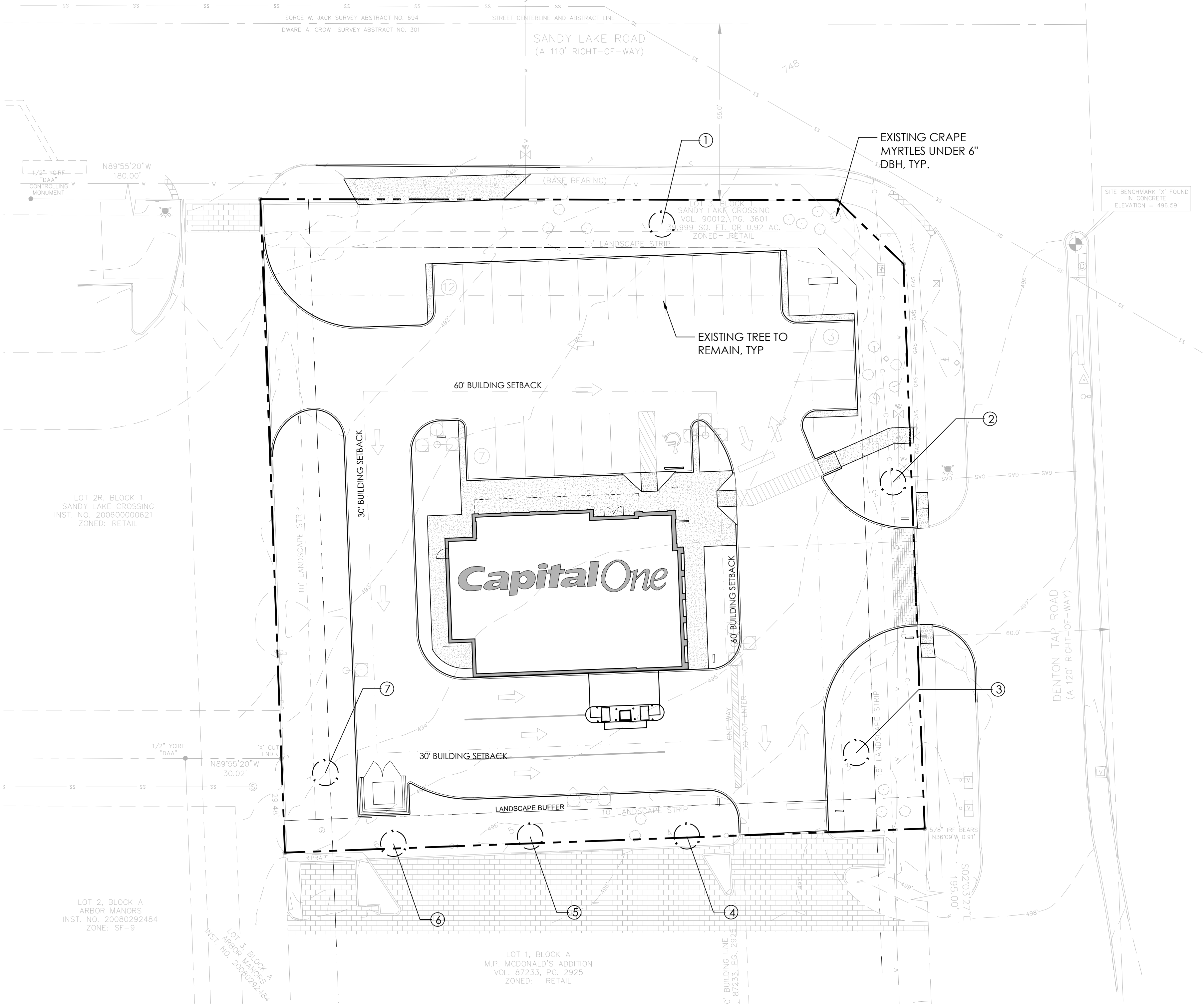
TREE PRESERVATION PLAN

Issued For Bid: X

Issued For Permit: X

Issued For Construction: X

TREE #	DBH	SPECIES	CANOPY TYPE	CANOPY SPREAD	LIVE CROWN RATIO
1	28"	POST OAK	DOMINANT	28' 26'-24'	80%
2	28"	POST OAK	DOMINANT	21'-25' 21'-22'	70%
3	24"	POST OAK	DOMINANT	31'-26' 24'-24'	80%
4	17"	POST OAK	DOMINANT	17'-16' 16'-16'	60%
5	18"	POST OAK	DOMINANT	17'-20' 21'-21'	80%
6	20"	POST OAK	DOMINANT	18'-20' 19'-19'	70%
7	22"	POST OAK	DOMINANT	19'-17' 18'-19'	70%



1 TREE PRESERVATION PLAN
1" = 20'-0"

