

ALOFT HOTEL SIGN (EXTERNALLY LIT)

1. GROUP R-1 HOTEL/MOTEL OCCUPANCIES SHALL BE OF TYPE I OR II CONSTRUCTION REGARDLESS OF HEIGHT AND OR AREA

2. THE ENTIRE FIRE LANE/MUTUAL ACCESS EASEMENT WILL BE CONSTRUCTED WITH THIS HOTEL

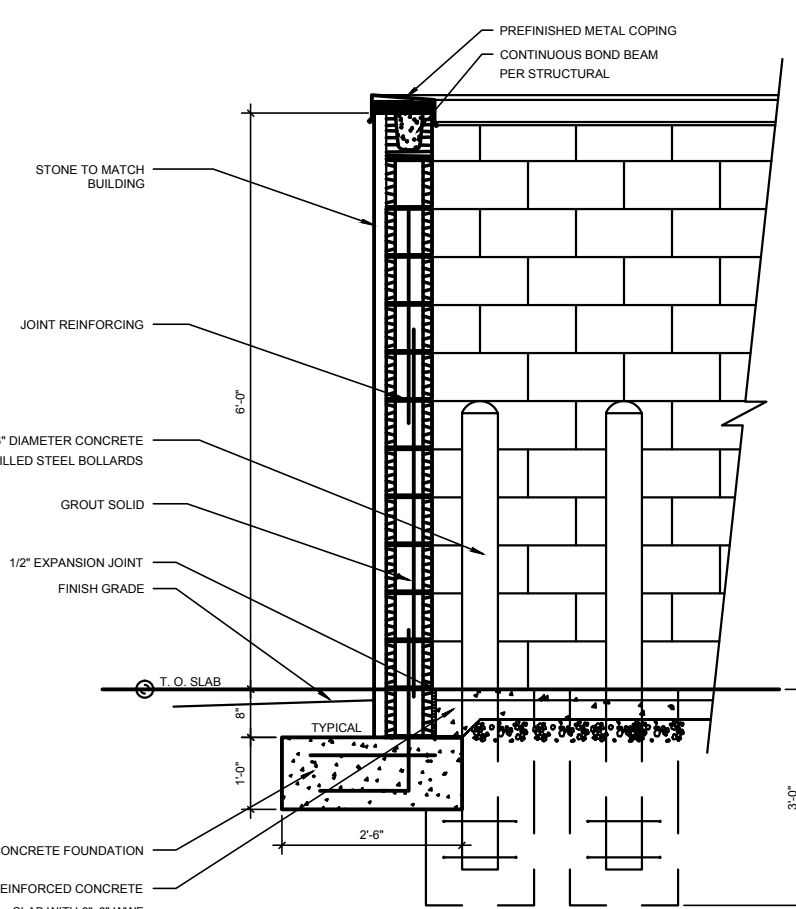
Ordinance Section 12-22-5.3: Allows for 3 colors. Base color up to 100%; Second color up to 5%; Accent color up to 1% of any one façade.
- Variance: Allow for up to 4 colors.

Ordinance Section 12-29-4.3: Allows for signage up to 225 sq. ft.

Ordinance Section 12-29-4.3: Allows for signage up to 225 sq. ft.

SITE DATA						
	BUILDING AREA	BUILDING HEIGHT	PARKING REQUIRED	PARKING PROVIDED	LOT COVERAGE	FLOOR AREA RATIO
HOLIDAY EXPRESS	1F:14,192 2F:13,863 3F:13,863 4F:13,863 5F:13,863 TOTAL:69,644	5 STORY 62'-10"	125 GUESTROOMS 125 SPACES 1,200 S.F MEETING ROOM@ $\frac{1000}{\text{ROOM}}$ S.F.= 12 SPACES= 137SPACES	133 SPACES	LOT AREA: 108,422 S.F. FIRST FLOOR: 14,192 S.F.= 13.0 %	TOTAL AREA: 69,644 S.F/ LOT AREA= 108,422 S.F.= 64.2%

REQUIRED AMENITIES	PROVIDED
MINIMUM OF 125 ROOMS MINIMUM ROOM SIZE OF 285 SQUARE FEET INTERIOR CLIMATE CONTROLLED CORRIDOR LOBBY/WAITING/ATRIUM AREAS - MIN 750 SQ.FT. OR 5 SQ.FT. PER GUEST ROOM RESTAURANT - LIMITED SERVICE PORTE-COCHERE OR OTHER COVERED AREA MEETING SPACE 1,200 SQ. FT. MINIMUM OF 2 ACRES	YES (125 ROOMS PROVIDED) YES (325 S.F. MIN PROVIDED) YES YES YES YES (1200 S.F PROVIDED) YES
OPTIONAL AMENITIES - INCLUDE MIN. OF 3	
INDOOR/OUTDOOR POOL (MIN 600 SQ.FT. WATER SURFACE AREA) EQUIPPED WEIGHT ROOM/ FITNESS CENTER (MIN. 600 SQ.FT.) PLAY GROUND SPORTS COURT JOGGING TRAIL (MIN 1/4 MILE) GIFT/PANTRY SNACK SHOP (MIN. 300 SQ. FT.) MEETING SPACE 5,000 SQ.FT. FULL SERVICE RESTAURANT (MINIMUM SEATING CAPACITY OF 35) OUTDOOR PLAZA (1,000 SQ.FT.)	YES (600 S.F. PROVIDED) YES (600 S.F. PROVIDED) NO NO NO NO NO NO YES (1022 S.F. PROVIDED)



A1.0