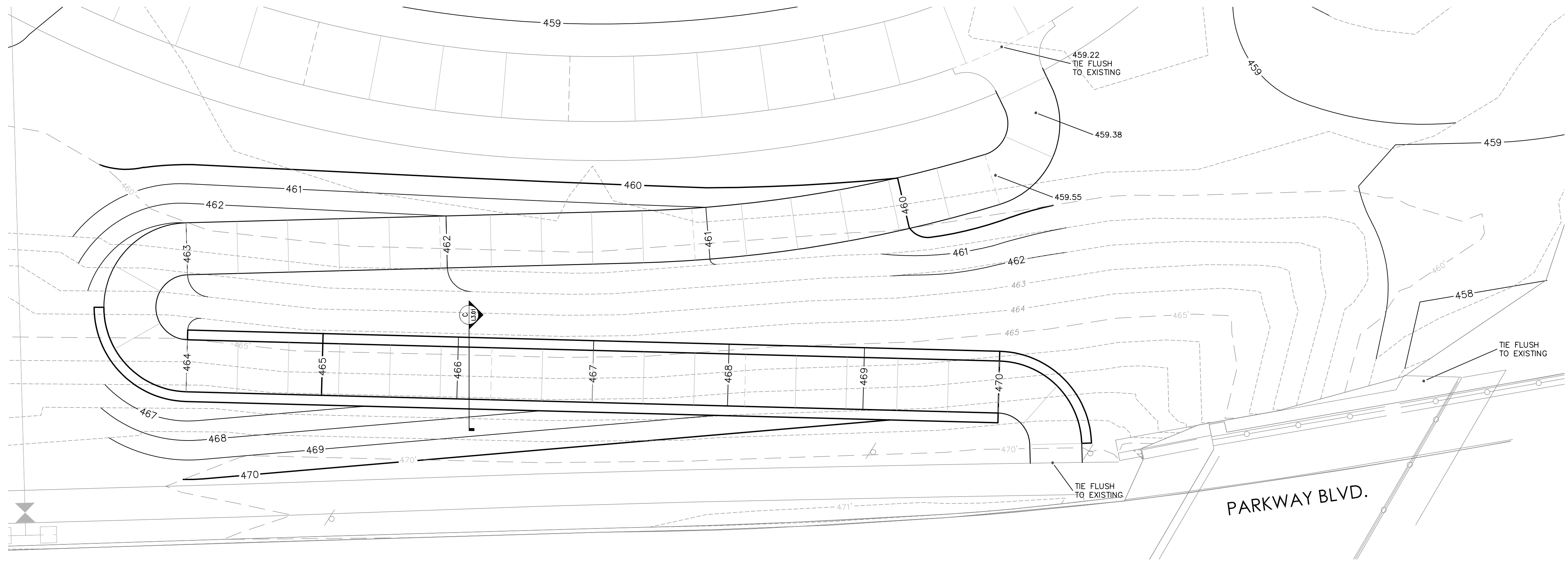


LAYOUT PLAN



GRADING PLAN

LEGEND

EXPANSION JOINT
CONTROL JOINT

PAVING FINISHES

TYPE A - MEDIUM BROOM FINISH CONCRETE
SEE DETAIL

NOTES

1. WRITTEN DIMENSIONS AND COORDINATES SHALL GOVERN OVER SCALED DRAWINGS.
2. LANDSCAPE ARCHITECT WILL PROVIDE AUTOCAD FILE TO CONTRACTOR. CONTRACTOR SHALL UTILIZE A REGISTERED PROFESSIONAL LAND SURVEYOR TO LAYOUT ALL PROPOSED IMPROVEMENTS FOR APPROVAL PRIOR TO INSTALLATION.
3. ALL IMPROVEMENTS SHALL BE STAKED IN THE FIELD BY THE CONTRACTOR AND APPROVED BY THE OWNER PRIOR TO CONSTRUCTION.
4. ALL CONSTRUCTION WILL CONFORM TO CITY OF COPPELL STANDARDS AND SPECIFICATIONS.
5. ALL DIMENSIONS SHOWN ARE TO FACE OF CURB, FACE OF WALL, OR FACE OF BUILDING UNLESS OTHERWISE NOTED.
6. THE CONTRACTOR SHALL COORDINATE INSTALLATION OF ALL SIGNS, PAVEMENT MARKINGS AND OTHER TRAFFIC CONTROL DEVICES WITH CITY REPRESENTATIVES.
7. LAYOUT AND GRADING FOR THE IMPROVEMENTS SHALL OCCUR AS DIRECTED BY THE LANDSCAPE ARCHITECT WITH THE FOLLOWING GUIDELINES:
 - ALL WALKS SHALL HAVE A MAXIMUM CROSS SLOPE OF 2% (1:48) IN THE DIRECTION OF THE DOWNHILL SIDE.
 - THE LONGITUDINAL SLOPE OF THE WALKS SHALL BE NO GREATER THAN 5% (1:20).
 - ALL GRADES SHALL BE FINISHED TO A SMOOTH, FLOWING CONTOUR, MAINTAINING EXISTING FLOW PATTERNS UNLESS DIRECTED OTHERWISE.
12. THE CONTRACTOR SHALL VERIFY ALL BUILDING SETBACK LINES, EASEMENT LINES, AND VISIBILITY LINES IN THE FIELD PRIOR TO CONSTRUCTION.
13. TREE TRUNK LOCATIONS SHOWN ARE APPROXIMATE. IF LOCATIONS CONFLICT WITH ANY PROPOSED IMPROVEMENT, CONTRACTOR SHALL CONTACT LANDSCAPE ARCHITECT FOR DIRECTION PRIOR TO ANY CONSTRUCTION.

REVISIONS		DESCRIPTION
NO.	DATE	

TRAIL CONNECTION PLAN

ANDREW BROWN COMMUNITY PARK - WEST TRAIL CONNECTION

363 N. DENTON TAP ROAD
COPPELL TEXAS

550 Bailey Avenue • Suite 400 • Fort Worth, Texas 76107
Tel: 817.335.1121 • Fax: 817.335.7437
(XREG. F-1114)

JOB NO. 8000810.001
DRAWN BY:
DESIGNED BY:
CHECKED BY:
DATE: AUGUST 2018
SHEET: L1.01