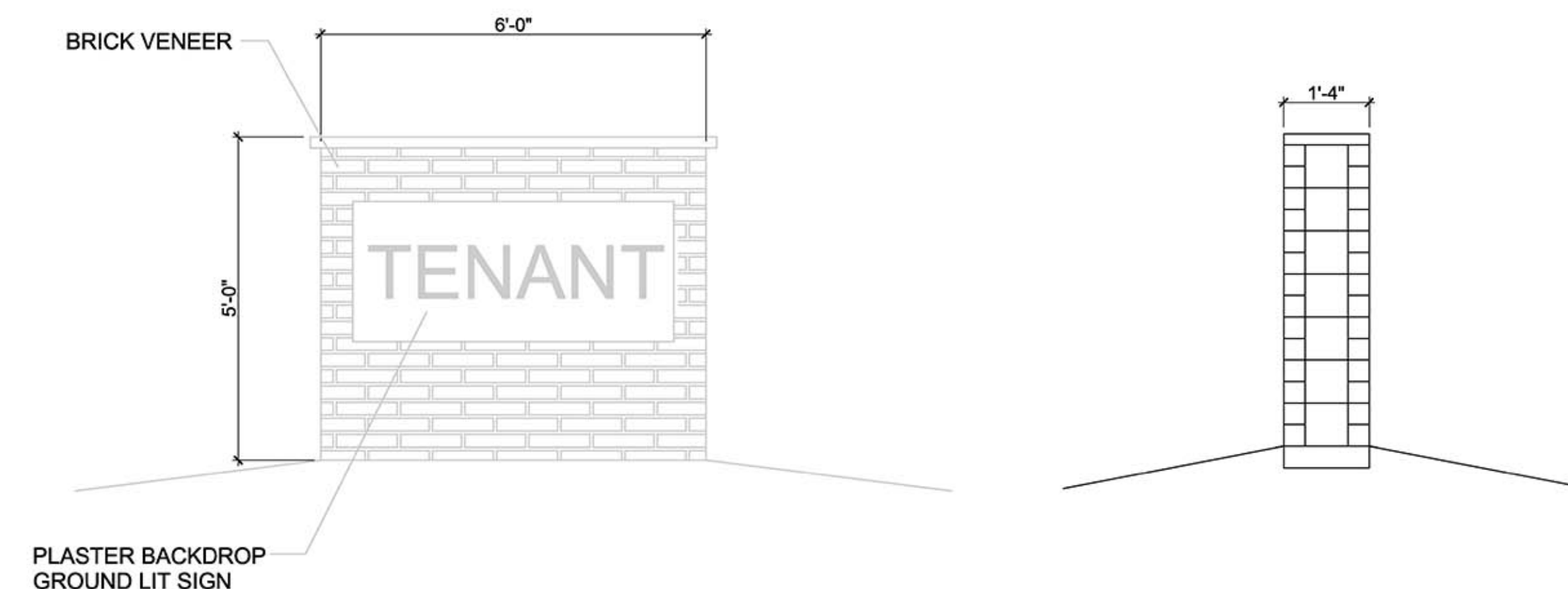
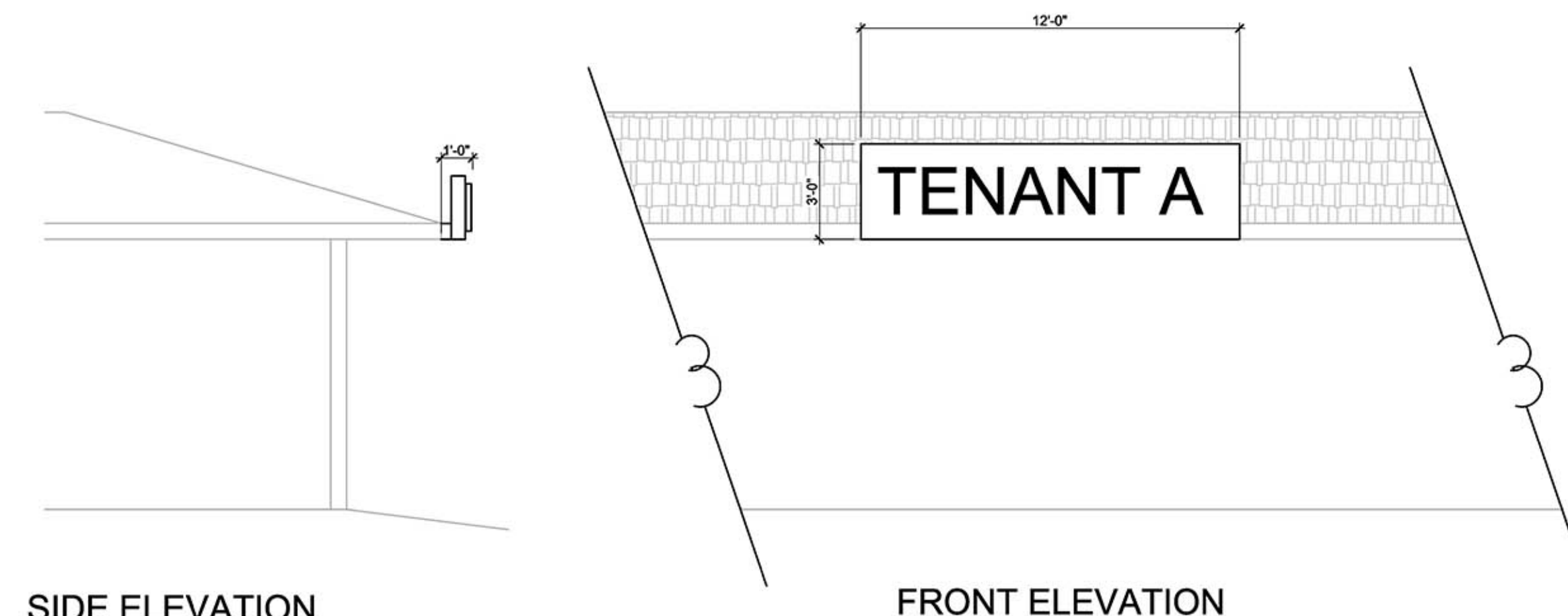


DETAIL C: BUILDING MOUNTED SIGN
N.T.S.

$3.3 \times 8 = 26.4$



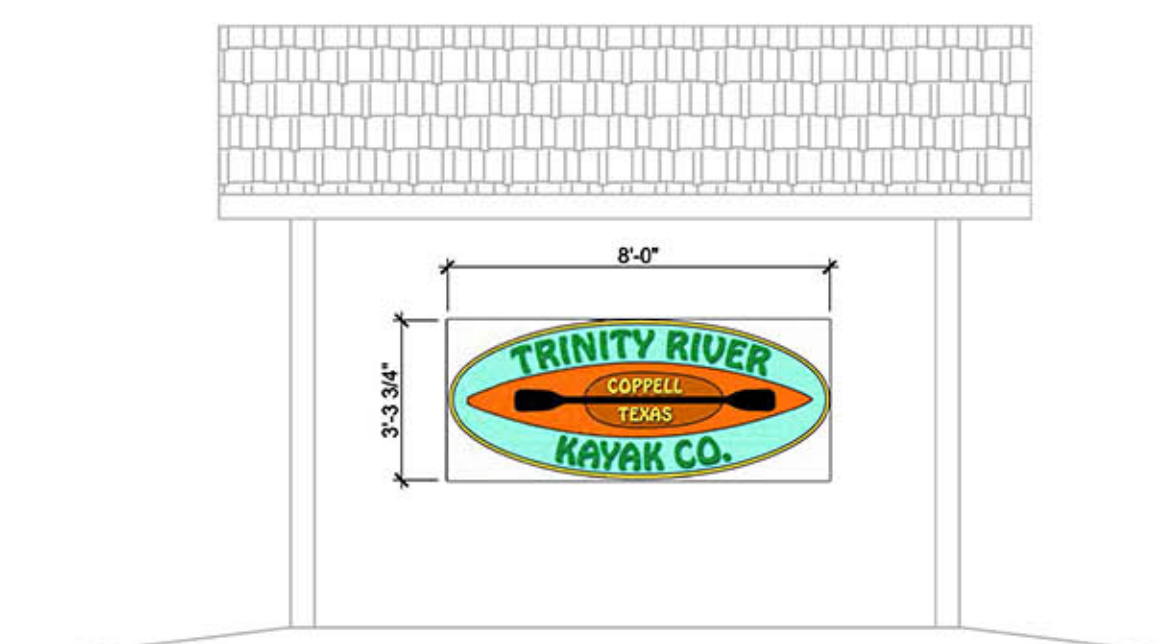
DETAIL A: MONUMENT SIGN
 $1/2" = 1'$



SIDE ELEVATION

FRONT ELEVATION

DETAIL B: ROOF MOUNTED SIGN
 $1/4" = 1'$



DETAIL D: BUILDING SIGN
 $1/4" = 1'$



DETAIL E: WALL MOUNTED SIGN
 $1/4" = 1'$



$4.83 \times 2 = 9.6$

SIGNAGE PLAN

TRINITY RIVER KAYAK COMPANY

1601. E. SANDY LAKE ROAD
COPELL, TEXAS
EXHIBIT 'D'