



STATE HIGHWAY 121
COPPELL, TX

AUGUST 9, 2019
DRAFT 6

SCOPE OF WORK

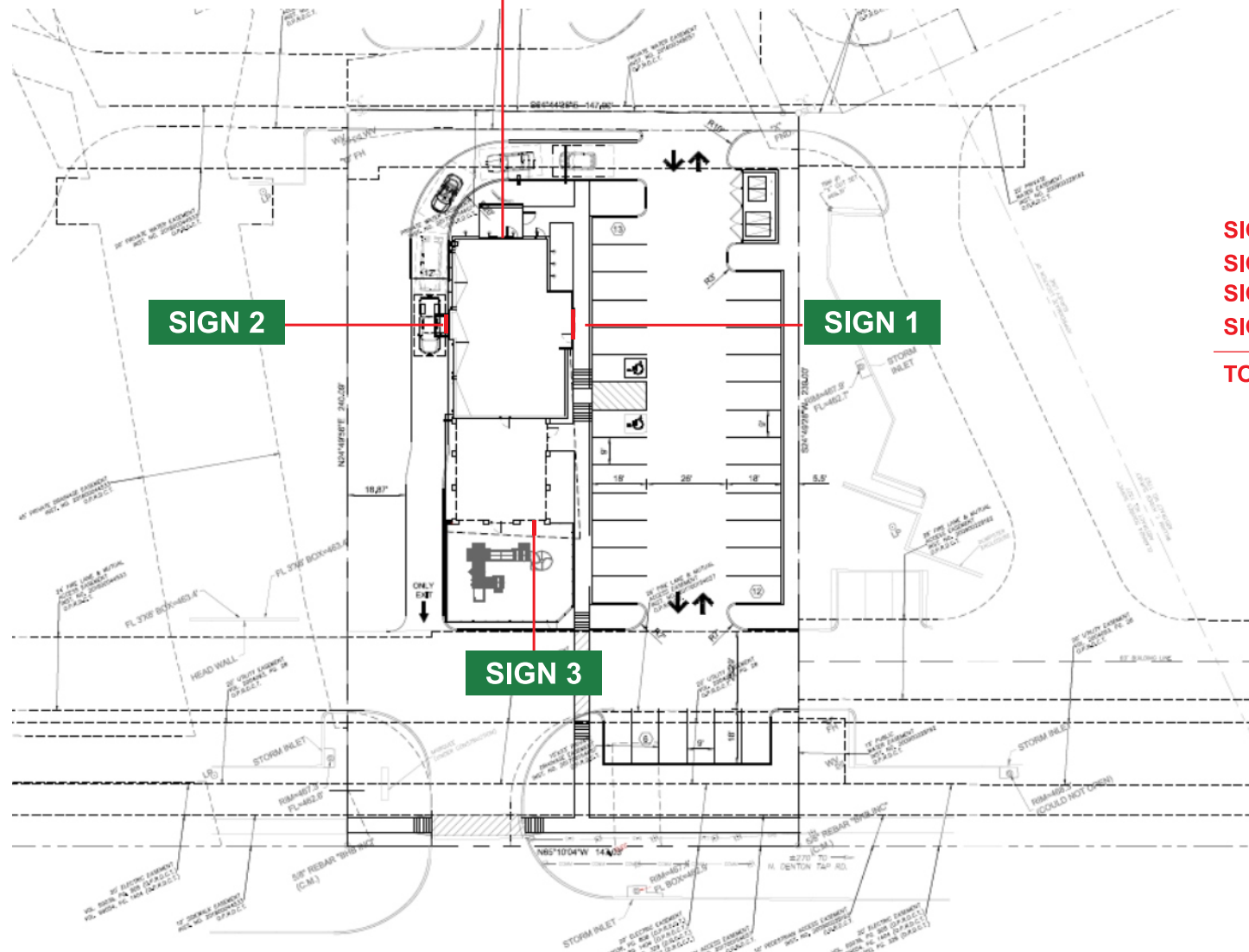
- 1** FABRICATE & INSTALL (1) ONE NEW ILLUMINATED LETTERS ON CIRCLE BACKGROUND
- 2** FABRICATE & INSTALL (1) ONE NEW ILLUMINATED LETTERS ON CIRCLE BACKGROUND
- 3** FABRICATE & INSTALL (1) ONE NEW ILLUMINATED SINGLE FACE BLADE SIGN.
- 4** FABRICATE & INSTALL (1) ONE SET OF NEW F.C.O. LETTERS AND SUBTEXT RIBBON / GOOSENECK ILLUMINATION

SITE PLAN

EXHIBIT "F"

2 of 8

SIGN 4



SIGN 1 25.0 Sq Ft

SIGN 2 25.0 Sq Ft

SIGN 3 10.0 Sq Ft

SIGN 4 23.0 Sq Ft

TOTAL 83.0 Sq Ft



SITE PLAN : N.T.S.



JOB NAME: Hat Creek-Coppell TX-R5

**1300B West Industrial Blvd
Round Rock, TX. 78681**

P: 512-255-3887

F: 512-388-7395



DATE: 08/01/19

R5 08/09/19

JOB NUMBER:

DRAWING NUMBER:

CUSTOMER APPROVAL: x

LANDLORD APPROVAL: x

ELEVATION

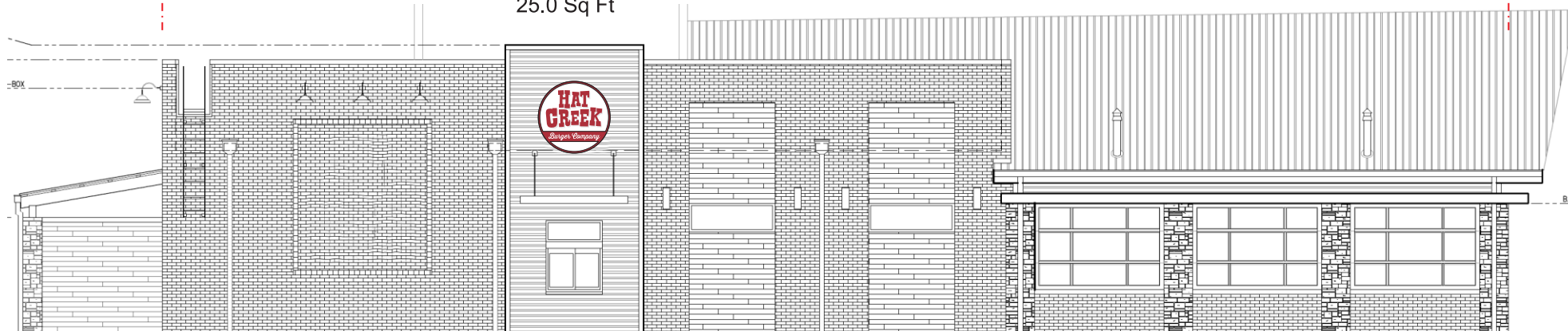
EXHIBIT "F"

3 of 8

93'-8"±

SIGN 2

25.0 Sq Ft



WEST ELEVATION : Scale 3/32" = 1'-0"

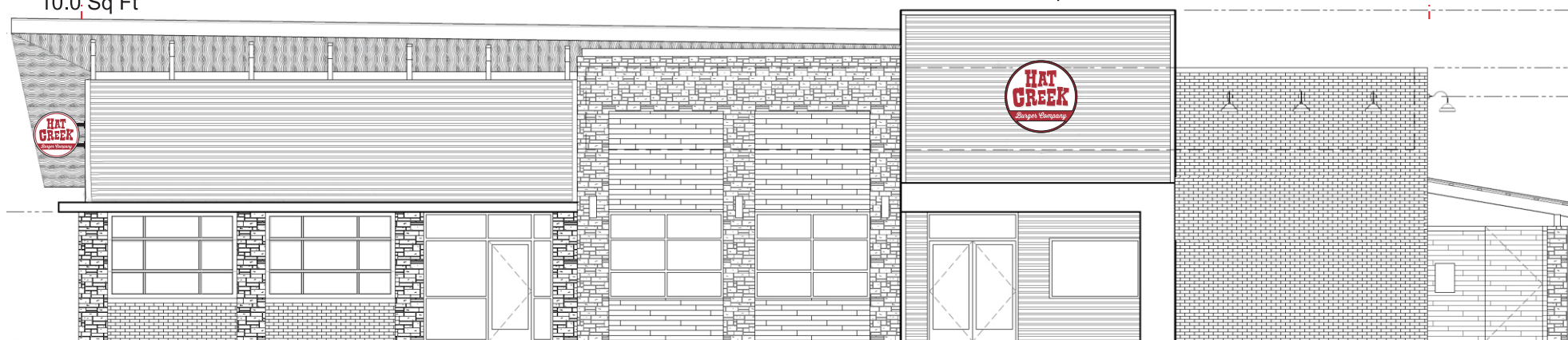
93'-8"±

SIGN 3

10.0 Sq Ft

SIGN 1

25.0 Sq Ft



EAST ELEVATION : Scale 3/32" = 1'-0"



JOB NAME: Hat Creek-Coppell TX-R5

1300B West Industrial Blvd.
Round Rock, TX. 78681
P: 512-255-3887
F: 512-388-7395



DATE: 08/01/19

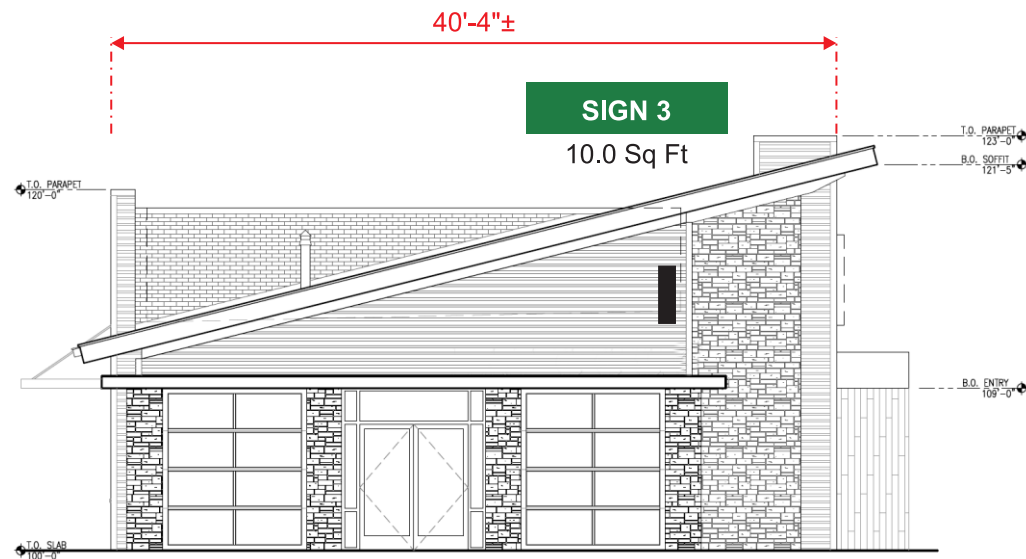
R5 08/09/19

JOB NUMBER:

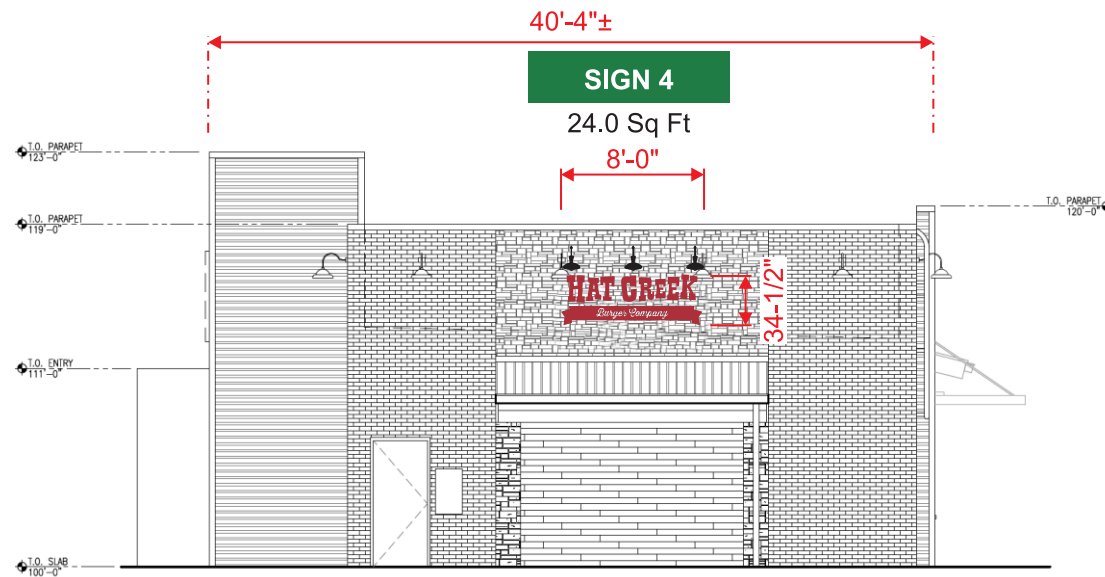
DRAWING NUMBER:

CUSTOMER APPROVAL: x _____

LANDLORD APPROVAL: x _____



SOUTH ELEVATION : Scale 3/32" = 1'-0"



NORTH ELEVATION : Scale 3/32" = 1'-0"



JOB NAME: Hat Creek-Coppell TX-R5

1300B West Industrial Blvd
Round Rock, TX. 78681

P: 512-255-3887

F: 512-388-7395



DATE: 08/01/19

R5 08/09/19

JOB NUMBER:

DRAWING NUMBER:

CUSTOMER APPROVAL: x _____

LANDLORD APPROVAL: x _____

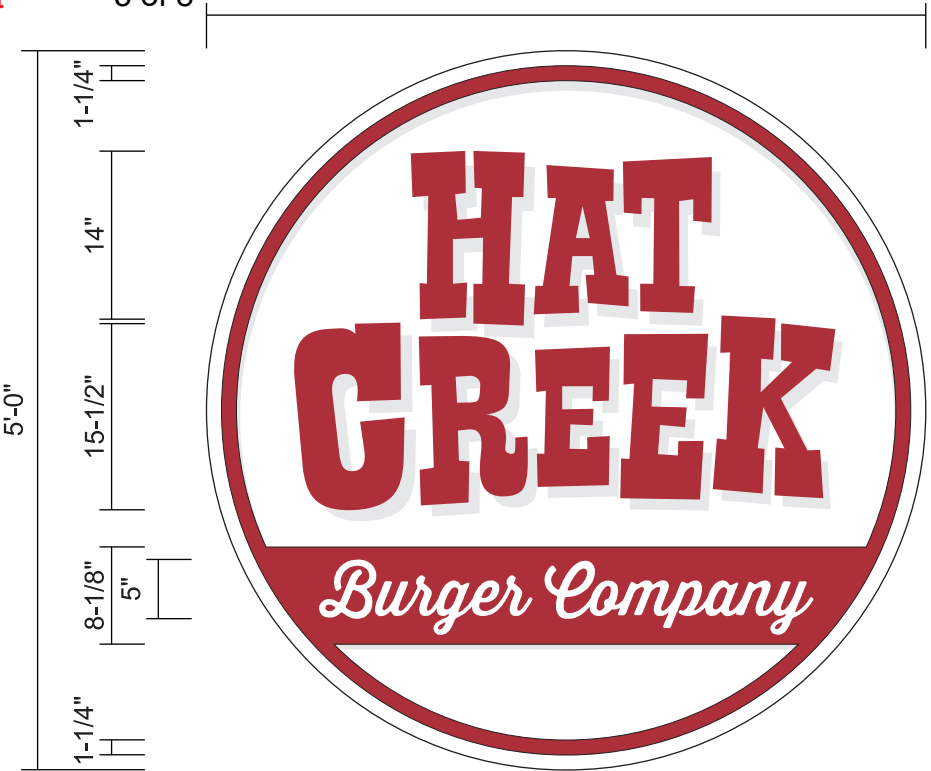
SIGNS 1 & 2

25.0 Sq Ft

EXHIBIT "F"

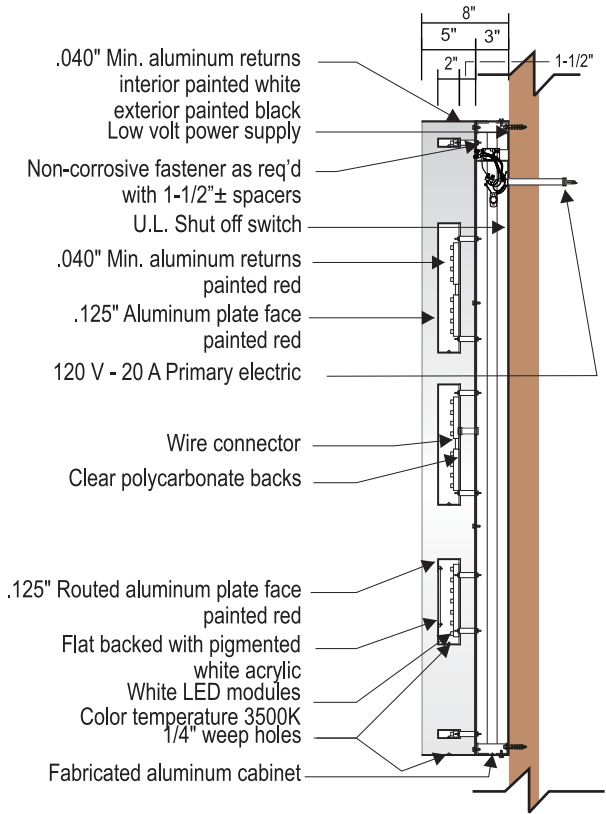
5 of 8

5'-0"



SIGN LAYOUT : Scale 3/4" = 1'-0"

SECTION DETAIL



COLOR SCHEME

- RED - SHERWIN WILLIAMS 6866 HEART THROB
- WHITE WHITE ACRYLIC #7128 WHITE LED COLOR TEMPERATURE 3500K
- BLACK

SPECIFICATIONS

SIGN	SINGLE FACE ILLUMINATED WALL SIGN. ALL ALUMINUM / CONVENTIONAL CABINET CONSTRUCTION. POWER SUPPLY W/IN 3" DEEP WIREWAY. EXTERIOR & INTERIOR / BACK PAINTED WHITE.
"HAT CREEK"	2" DEEP FABRICATED ALUMINUM FACE & RETURNS (PAINTED RED). CLEAR POLYCARBONATE BACKS. HALO LIT BY WHITE LED's. STANDOFF MOUNTED 1-1/2" FROM CABINET.
"BURGER CO." & RED RING	2" DEEP FABRICATED ALUMINUM FACE & RETURNS (PAINTED RED). "Burger Company" TO BE ROUTED ALUMINUM PLATE FACE FLAT BACKED WITH PIGMENTED WHITE ACRYLIC. CLEAR POLYCARBONATE BACKS. HALO LIT BY WHITE LED's. STANDOFF MOUNTED 1-1/2" FROM CABINET.
MOUNTING	CABINET FLUSH MOUNTED TO WALL WITH FASTENERS AS REQUIRED.



1300B West Industrial Blvd
Round Rock, TX. 78681
P: 512-255-3887
F: 512-388-7395

JOB NAME: Hat Creek-Coppell TX-R5

DATE: 08/01/19

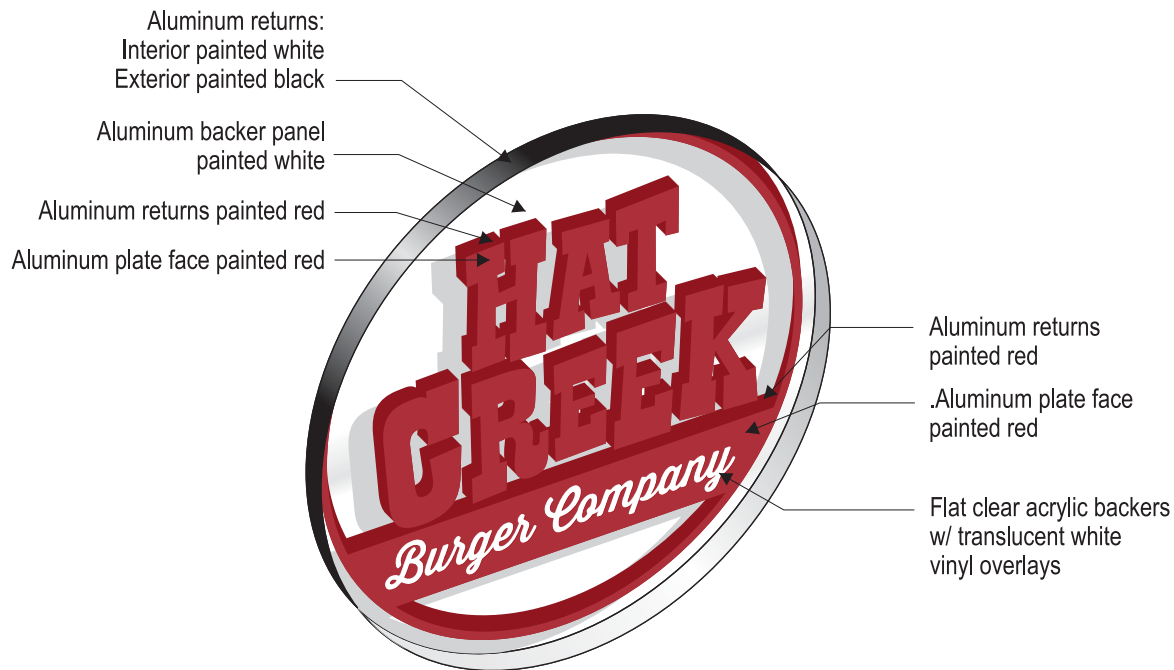
R5 08/09/19

JOB NUMBER:

DRAWING NUMBER:

CUSTOMER APPROVAL: x

LANDLORD APPROVAL: x



3D VIEW

FRONT
(Exterior Sign)



NIGHT VIEW



OB NAME: Hat Creek-Coppell TX-R5

1300B West Industrial Blvd
Round Rock, TX. 78681

P: 512-255-3887

F: 512-388-7395



DATE: 08/01/19

R5 08/09/19

JOB NUMBER:

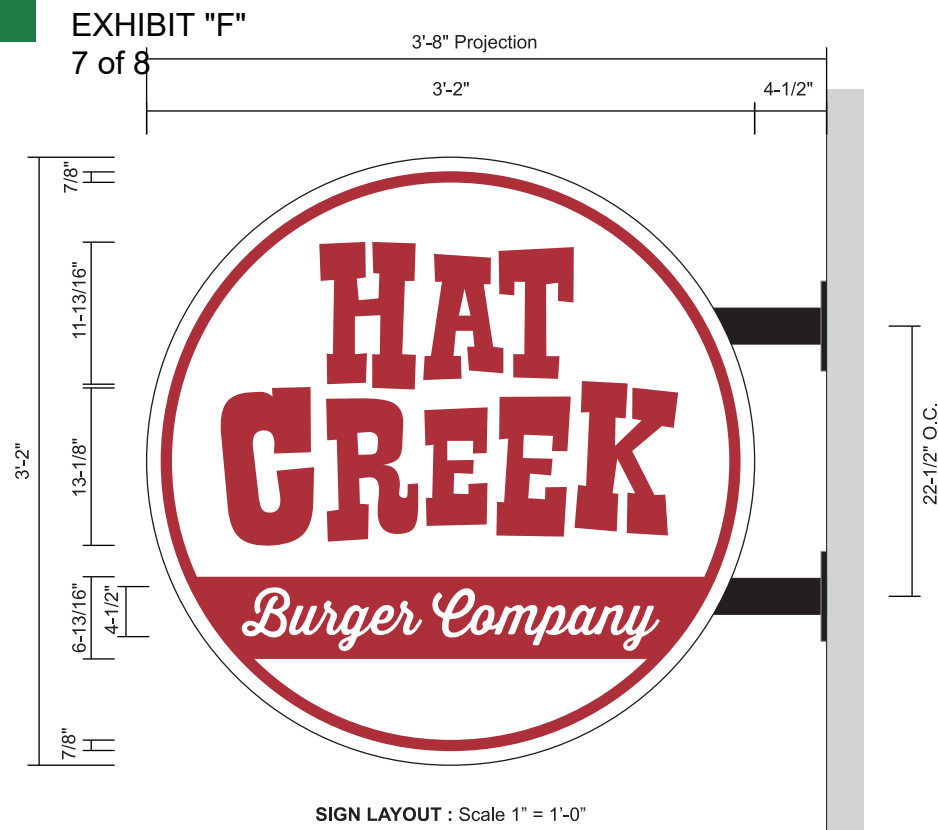
DRAWING NUMBER:

CUSTOMER APPROVAL: x

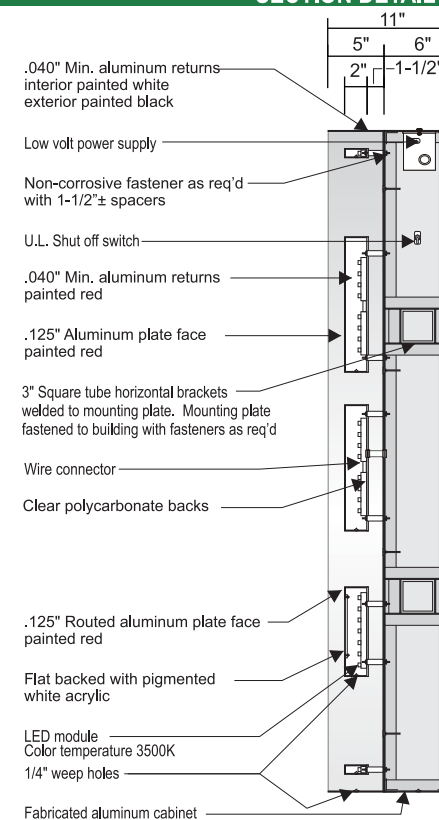
LANDLORD APPROVAL: x

SIGN 3

10.0 Sq Ft



SECTION DETAIL



COLOR SCHEME

RED - SHERWIN WILLIAMS
6866 HEART THROB

WHITE
WHITE ACRYLIC #7128
WHITE LED's
COLOR TEMPERATURE 3500K

BLACK

SPECIFICATIONS

SIGN
BACKER

"HAT CREEK"

"BURGER CO."
& RED RING

MOUNTING

SINGLE FACE ILLUMINATED BLADE SIGN. ALL ALUMINUM / CONVENTIONAL CABINET CONSTRUCTION. OPEN FACE BACKER CHANNEL. EXPOSED INTERIOR BACK & RETURNS PAINTED WHITE. EXTERIOR OF CABINET PAINTED BLACK. 2" DEEP FABRICATED ALUMINUM FACE & RETURNS PAINTED RED. CLEAR POLYCARBONATE LETTER BACKS. HALO LIT BY WHITE LED's. STANDOFF MOUNTED 1-1/2" FROM EXPOSED INTERIOR CABINET BACK.

2" DEEP FABRICATED ALUMINUM FACE & RETURNS PAINTED RED. "Burger Company" TO BE ROUTED ALUMINUM PLATE FACE FLAT BACKED WITH PIGMENTED WHITE ACRYLIC. CLEAR POLYCARBONATE BACKS. HALO LIT BY WHITE LED's. STANDOFF MOUNTED 1-1/2" FROM EXPOSED INTERIOR CABINET BACK.

CABINET TO HAVE 3" SQUARE TUBE HORIZONTAL BRACKETS WELDED TO ALUMINUM MOUNTING PLATE. MOUNTING PLATE SECURED TO BUILDING WITH FASTENERS AS REQUIRED.



1300B West Industrial Blvd
Round Rock, TX. 78681

P: 512-255-3887

F: 512-388-7395



JOB NAME: Hat Creek-Coppell TX-R5

DATE: 08/01/19

R5 08/09/19

JOB NUMBER:

DRAWING NUMBER:

CUSTOMER APPROVAL: x

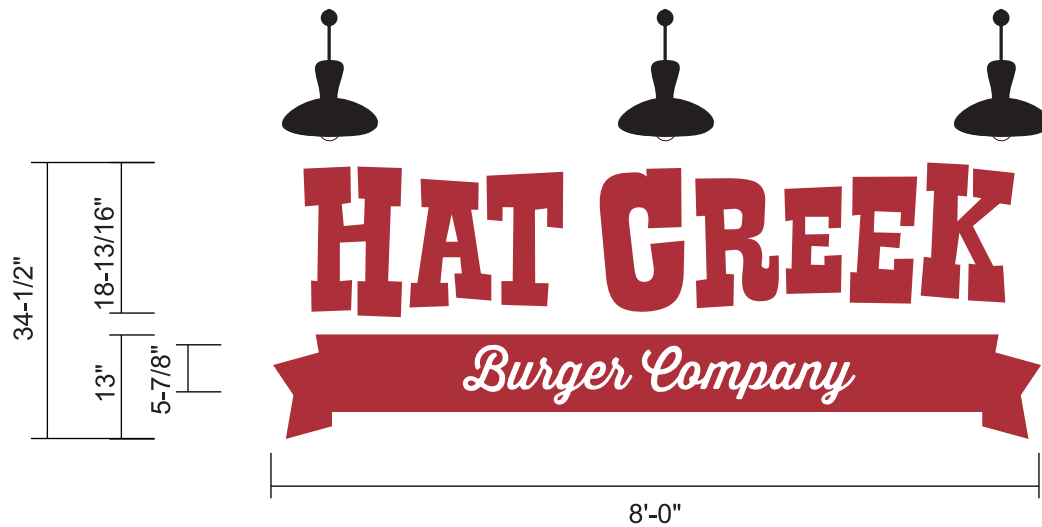
LANDLORD APPROVAL: x

SIGN 4

23.0 Sq Ft

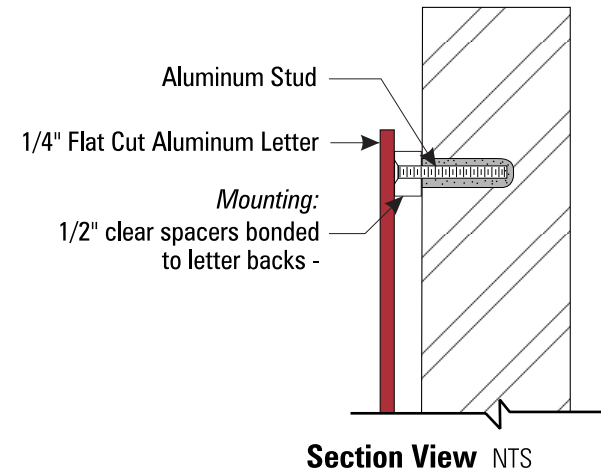
EXHIBIT "F"

8 of 8



FRONT ELEVATION : Scale 1/2" = 1'-0"

SECTION DETAIL



COLOR SCHEME

☒ RED - SHERWIN WILLIAMS
6866 HEART THROB

☐ WHITE VINYL LETTERS

SPECIFICATIONS

LETTERS FLAT CUT OUT PAINTED ALUMINUM PLATE LETTERS, 1/2" STAND-OFF MOUNT FROM BUILDING WALL.

SUBTEXT RIBBON FLAT CUT OUT PAINTED ALUMINUM PLATE RIBBON, 1/2" STAND-OFF MOUNT FROM BUILDING WALL. WHITE VINYL SUBTEXT LETTERS.

LIGHTING EXTERNAL ILLUMINATION BY GOOSENECK LAMP FIXTURES.



1300B West Industrial Blvd
Round Rock, TX. 78681

P: 512-255-3887

F: 512-388-7395



JOB NAME: Hat Creek-Coppell TX-R5

DATE: 08/01/19

R5 08/09/19

JOB NUMBER:

DRAWING NUMBER:

CUSTOMER APPROVAL: x _____

LANDLORD APPROVAL: x _____