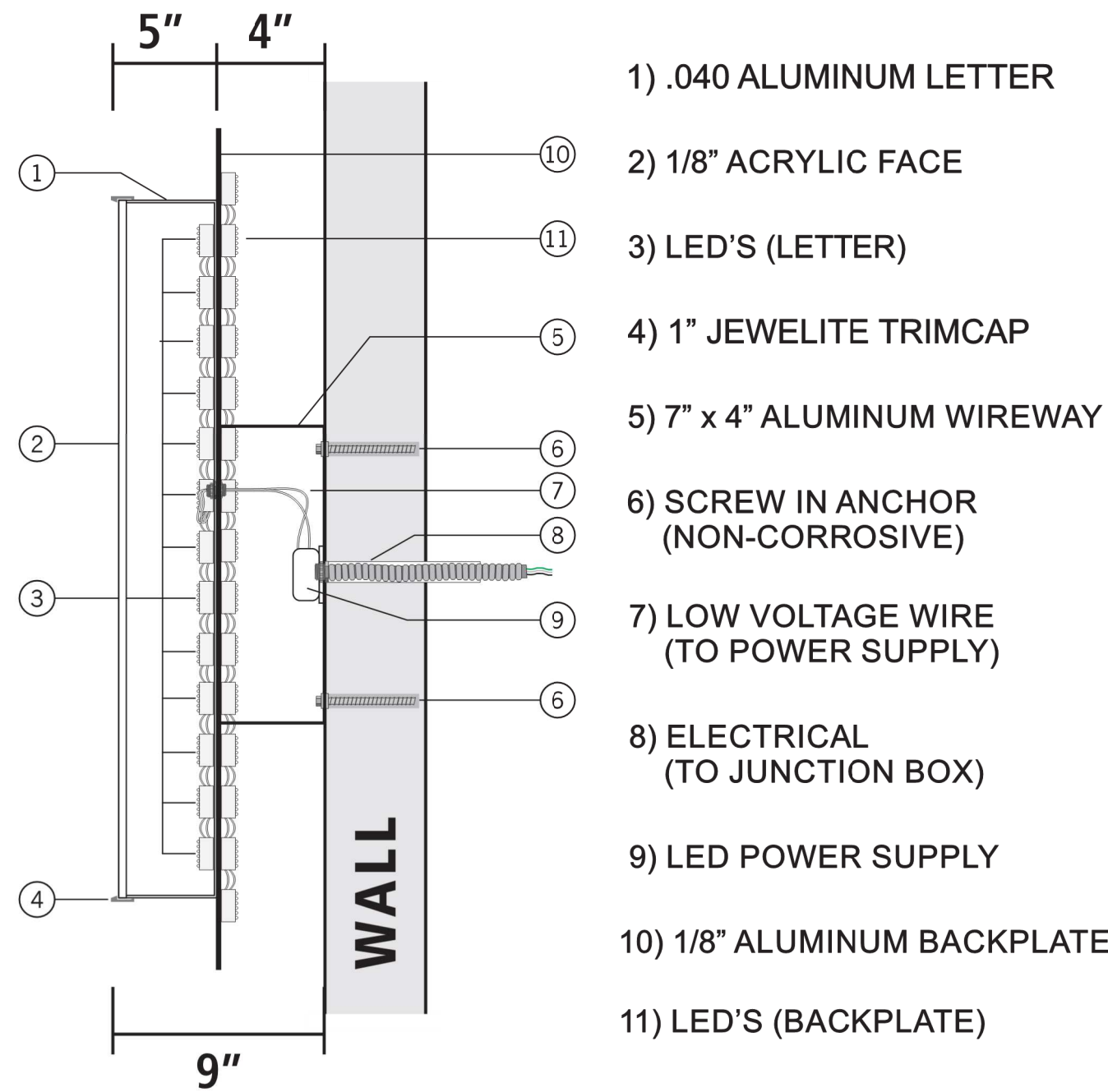
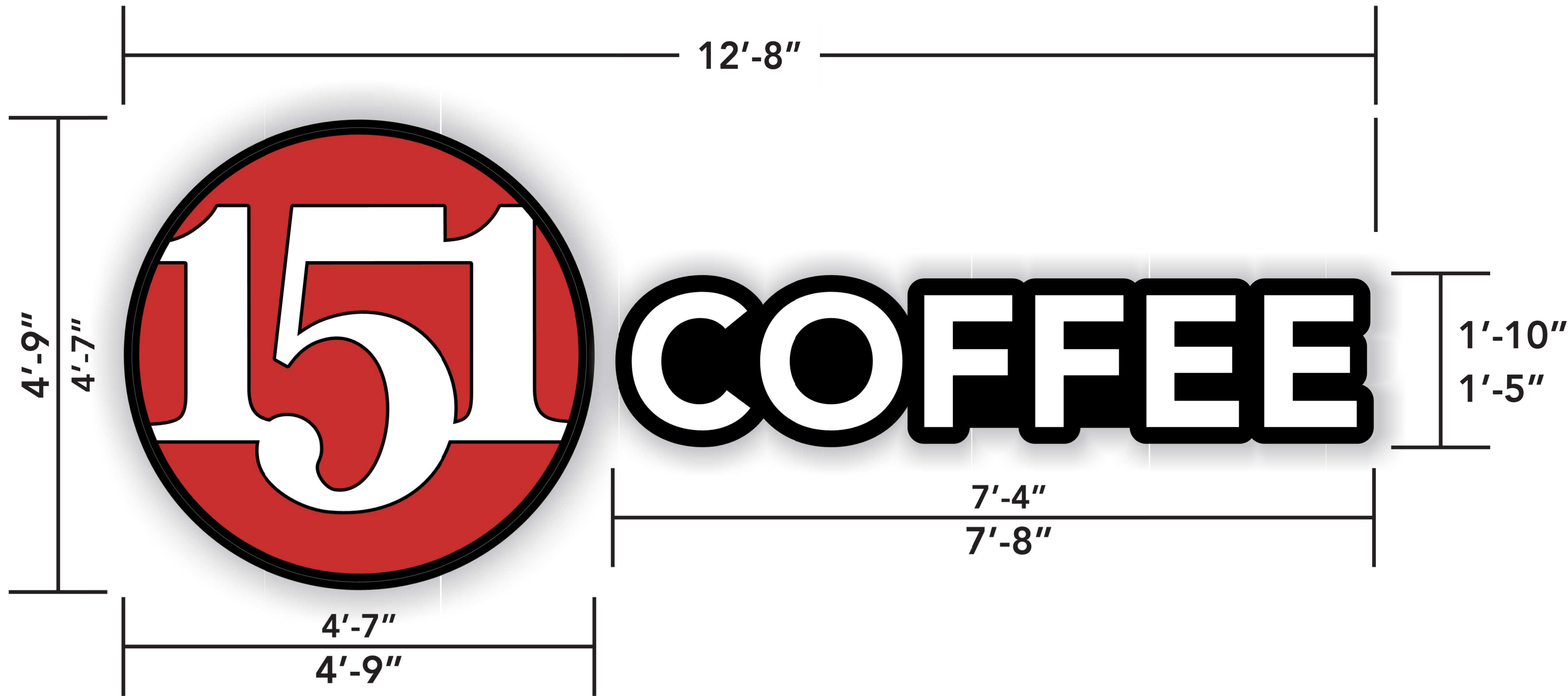


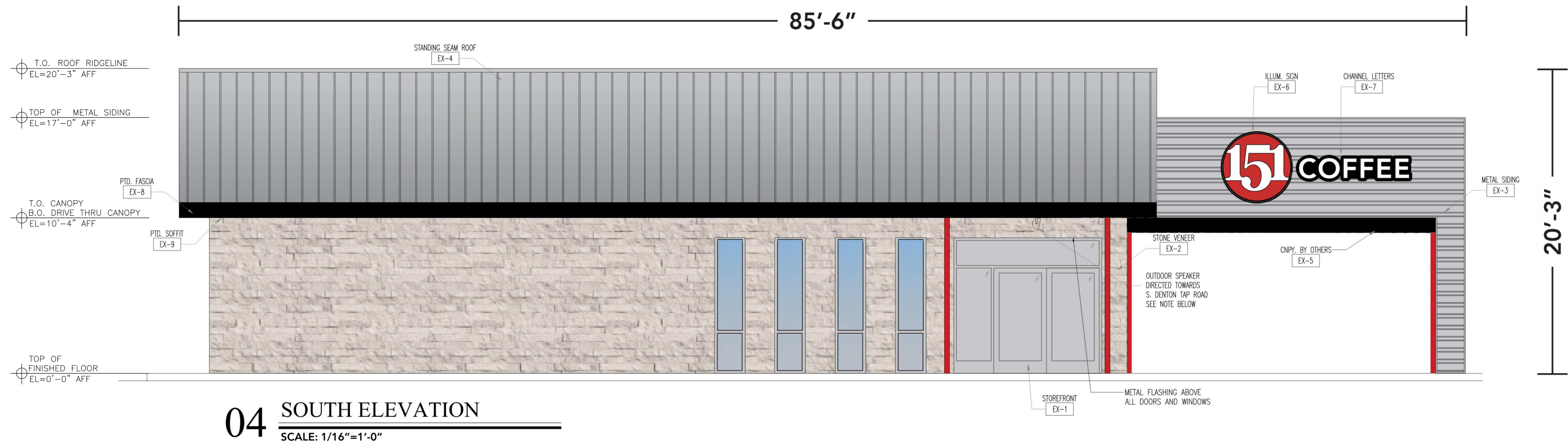
Scale: 3/8"=1'-0"

60.0
SQ.FT.



Manufacture & Install (1) set of channel letters w/ logo on backplate as shown.

- LETTERS**
- aluminum returns: prefinished white.
 - white acrylic faces and white trimcap.
 - internal illumination: white leds.
 - durabond aluminum backplate: prefinished black.
 - double white LEDs applied on backplate, creating white back splash on fascia.
- LOGO**
- aluminum returns: prefinished black.
 - white acrylic faces w/ vinyl graphics applied to surface and black trimcap.
 - internal illumination: white leds.
 - durabond aluminum backplate: prefinished black.
 - double white LEDs applied on backplate, creating white back splash on fascia.
 - vinyl color(s): (3M) red, black.



LET US HELP BUILD YOUR IMAGE

5105 E. CALIFORNIA PKWY. FORT WORTH, TEXAS 76028 - 817.834.1123

DESIGN#: 9162A
SALES: KRISTIAN BAKER
ART: KRISTIAN BAKER
DATE: 8.18.20

PROJECT: 151 COFFEE - COPPELL
ADDRESS: 131 SOUTH DENTON TAP RD
COPPELL, TX 75019

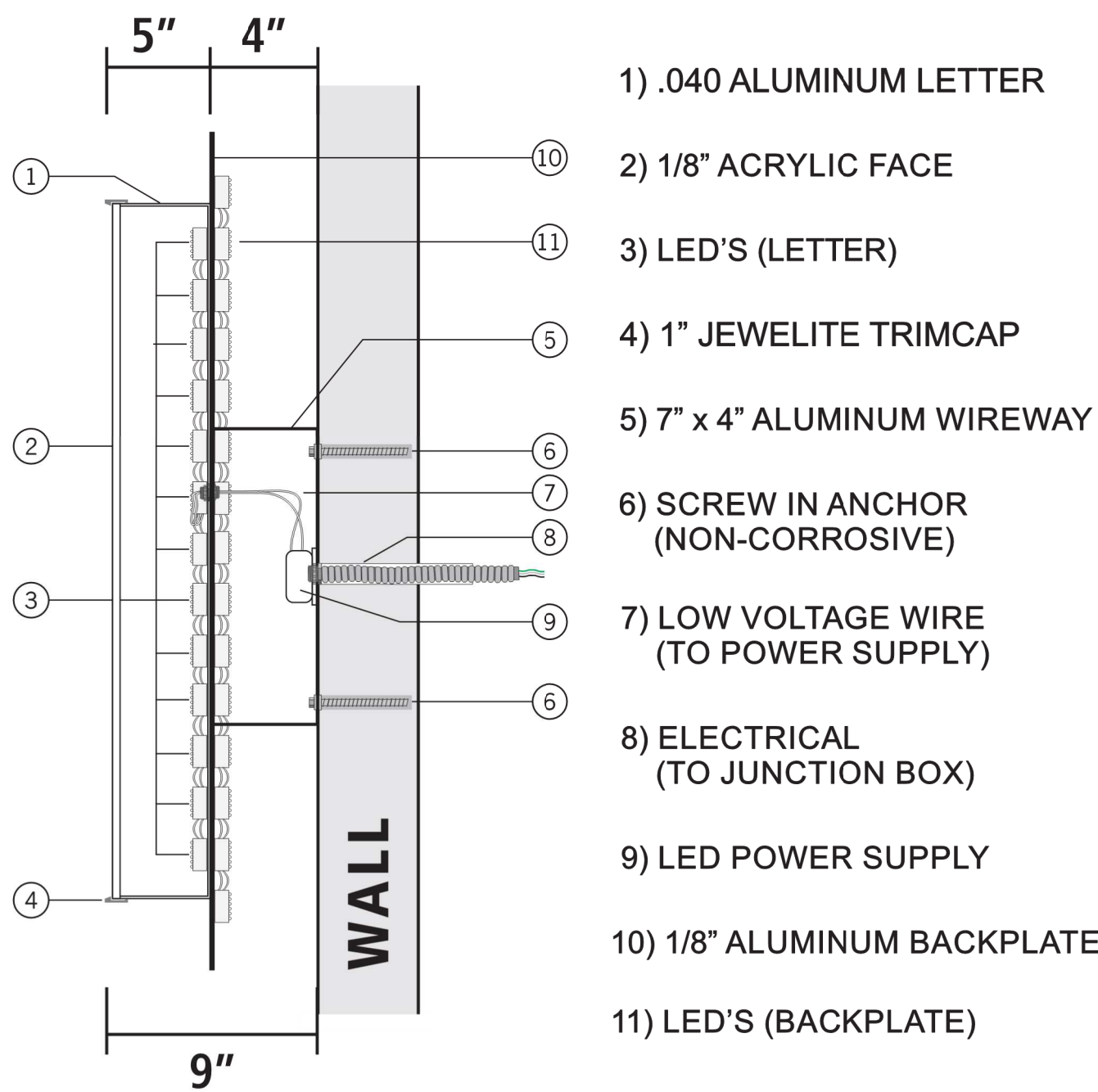
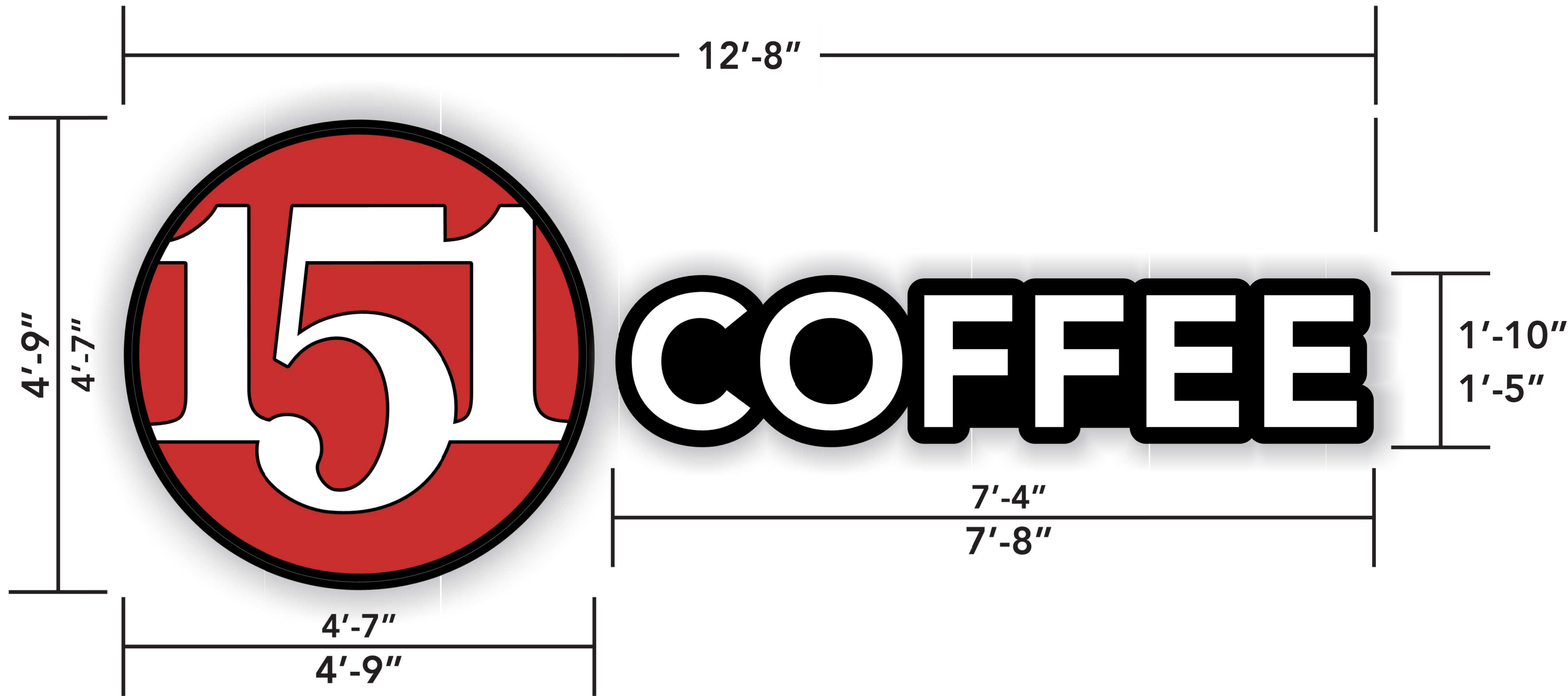
SIGNATURE:

This drawing is the property of Global Signs Inc and has been furnished in confidence for bidding purposes only. No part of this drawing shall be replicated, duplicated, distributed, made available to others or used to any other extent; without written permission from Global Signs Inc. Any individual, company, firm or corporation who receives this document; however obtained, is to adhere to these restrictions. Failure to comply could result in the appropriate legal action being taken.

This drawing is conceptual only & for convenience of reference. It should not be relied upon as an exact representation of sizes, materials or colors used for signage.

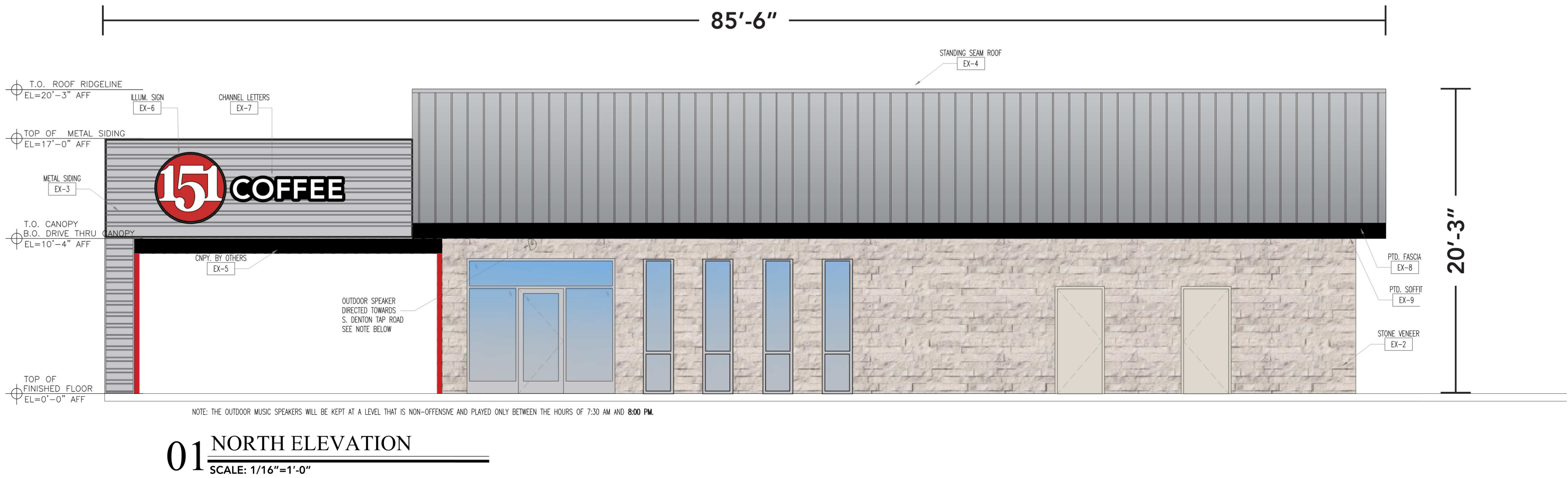
Scale: 3/8"=1'-0"

60.0
SQ.FT.



Manufacture & Install (1) set of channel letters w/ logo on backplate as shown.

- LETTERS
- aluminum returns: prefinished white.
 - white acrylic faces and white trimcap.
 - internal illumination: white leds.
 - durabond aluminum backplate: prefinished black.
 - double white LEDs applied on backplate, creating white back splash on fascia.
- LOGO
- aluminum returns: prefinished black.
 - white acrylic faces w/ vinyl graphics applied to surface and black trimcap.
 - internal illumination: white leds.
 - durabond aluminum backplate: prefinished black.
 - double white LEDs applied on backplate, creating white back splash on fascia.
 - vinyl color(s): (3M) red, black.



LET US HELP BUILD YOUR IMAGE

5105 E. CALIFORNIA PKWY. FORT WORTH, TEXAS 76028 - 817.834.1123

DESIGN#: 9162B
SALES: KRISTIAN BAKER
ART: KRISTIAN BAKER
DATE: 8.18.20
PROJECT: 151 COFFEE - COPPELL
ADDRESS: 131 SOUTH DENTON TAP RD
COPPELL, TX 75019

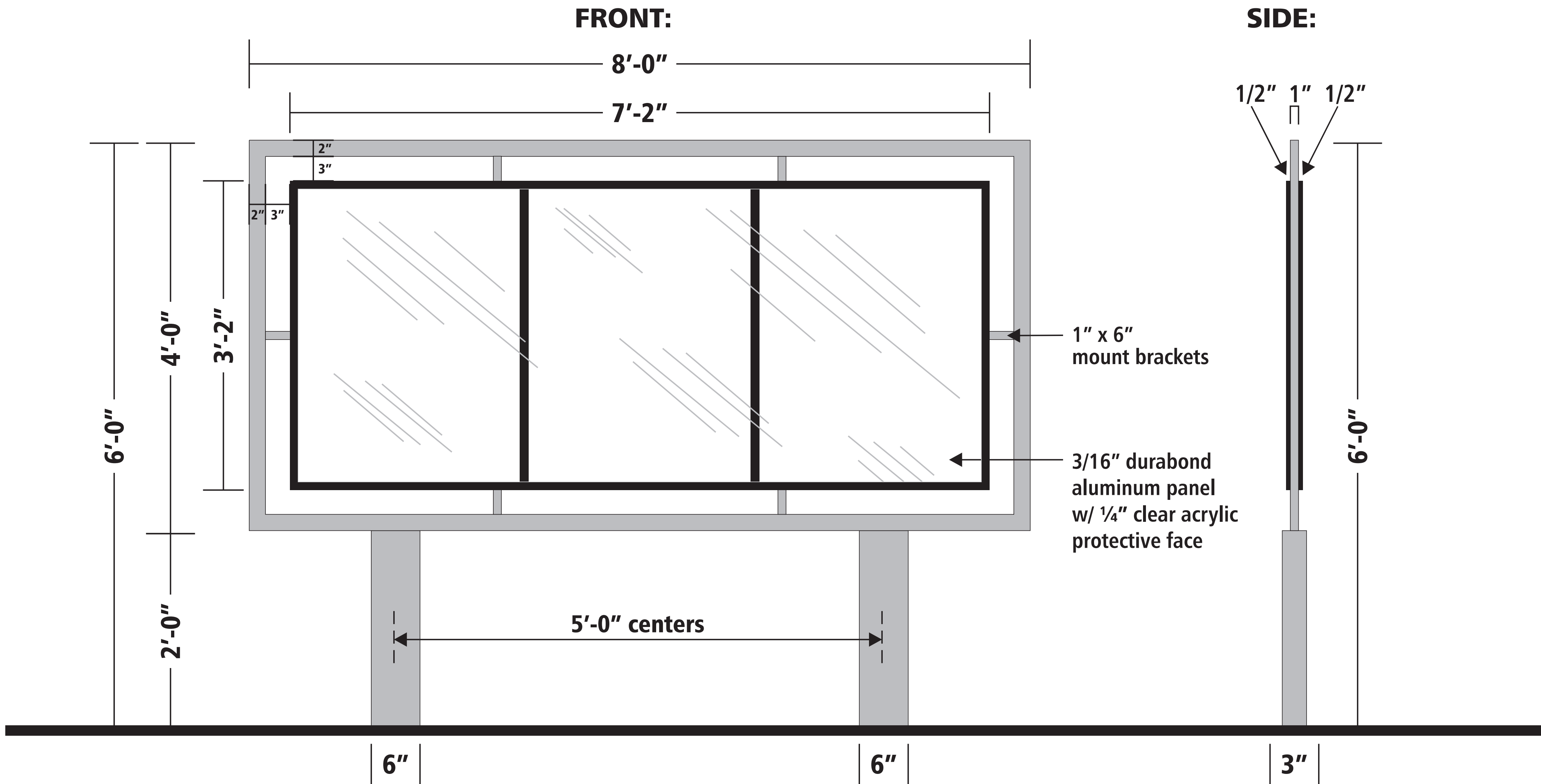
SIGNATURE:

This drawing is the property of Global Signs Inc and has been furnished in confidence for bidding purposes only. No part of this drawing shall be replicated, duplicated, distributed, made available to others or used to any other extent; without written permission from Global Signs Inc. Any individual, company, firm or corporation who receives this document; however obtained, is to adhere to these restrictions. Failure to comply could result in the appropriate legal action being taken.

This drawing is conceptual only & for convenience of reference. It should not be relied upon as an exact representation of sizes, materials or colors used for signage.

Scale: 1/2"=1'-0"

48.0
SQ.FT.



MANUFACTURE AND INSTALL (1) S/F MENU BOARD SIGN AS SHOWN.

- SIGN POSTS & FRAME TO BE CONSTRUCTED OF ALUMINUM TUBING AND PAINTED METALLIC SILVER.
- MENU BOARD TO BE WHITE DURABOND ALUMINUM w/ (3M) BLACK VINYL DIVIDERS APPLIED TO SURFACE. ALUMINUM TRIM TO BE PAINTED BLACK AND WILL HOLD REMOVABLE CLEAR ACRYLIC PROTECTIVE COVERS.
- MENU BOARD MOUNTED TO SIGN FRAME WITH ALUMINUM BRACKETS THAT ARE PAINTED METALLIC SILVER.



LET US HELP BUILD YOUR IMAGE

5105 E. CALIFORNIA PKWY. FORT WORTH, TEXAS 76028 - 817.834.1123

DESIGN#: 9162C
SALES: KRISTIAN BAKER
ART: KRISTIAN BAKER
DATE: 8.18.20

PROJECT: 151 COFFEE - COPPELL
ADDRESS: 131 SOUTH DENTON TAP RD
COPPELL, TX 75019

SIGNATURE:

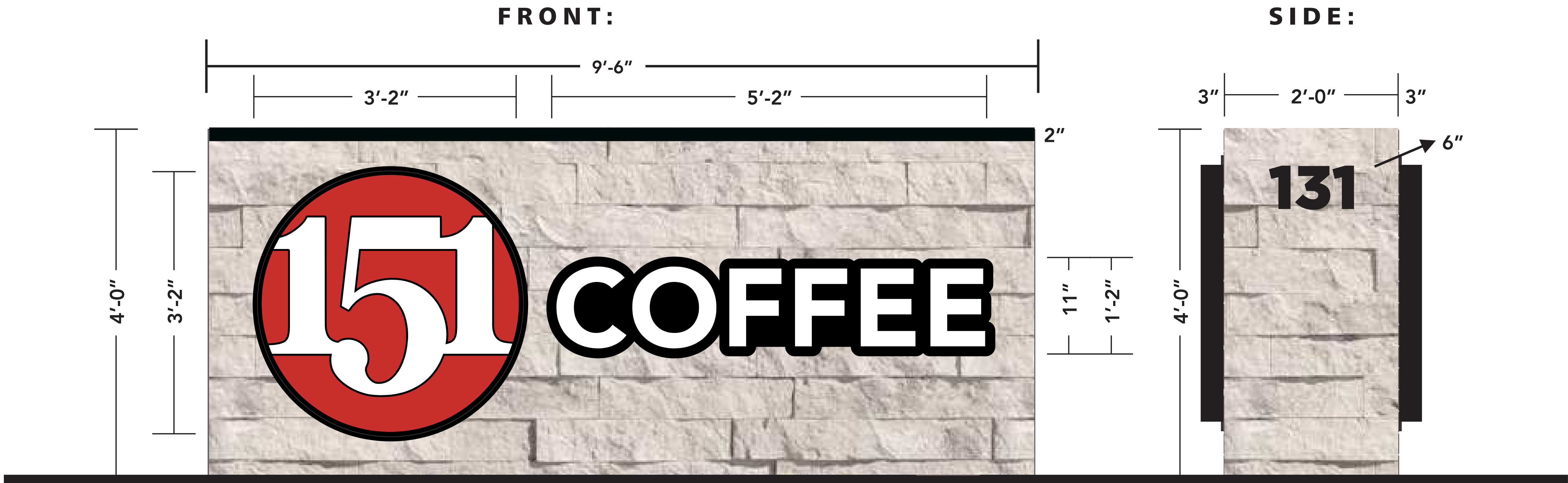
This drawing is the property of Global Signs Inc and has been furnished in confidence for bidding purposes only. No part of this drawing shall be replicated, duplicated, distributed, made available to others or used to any other extent; without written permission from Global Signs Inc. Any individual, company, firm or corporation who receives this document; however obtained, is to adhere to these restrictions. Failure to comply could result in the appropriate legal action being taken.

This drawing is conceptual only & for convenience of reference. It should not be relied upon as an exact representation of sizes, materials or colors used for signage.

Scale: 1/2"=1'-0"

38.0

SQ.FT.



Manufacture & Install (1) D/F Monument sign w/ (2) sets of channel letters w/ logo on backplate as shown.

- MONUMENT
- pre-cast concret cap; black
 - coronado thin stone veneer 6" split limestone; white to match building.
 - cabinet; aluminum painted black.
 - logo & channel letters on backplate mounted directly to facia.
 - address numbers; black acrylic

- LETTERS
- aluminum returns: prefinished white.
 - white acrylic faces and white trimcap.
 - external illumination: flood lights.

- LOGO
- aluminum returns: prefinished black.
 - white acrylic faces w/ vinyl graphics applied to surface and black trimcap.
 - durabond aluminum backplate: prefinished black.
 - vinyl color(s): (3M) red, black.
 - external illumination: flood lights.



LET US HELP BUILD YOUR IMAGE

5105 E. CALIFORNIA PKWY. FORT WORTH, TEXAS 76028 - 817.834.1123

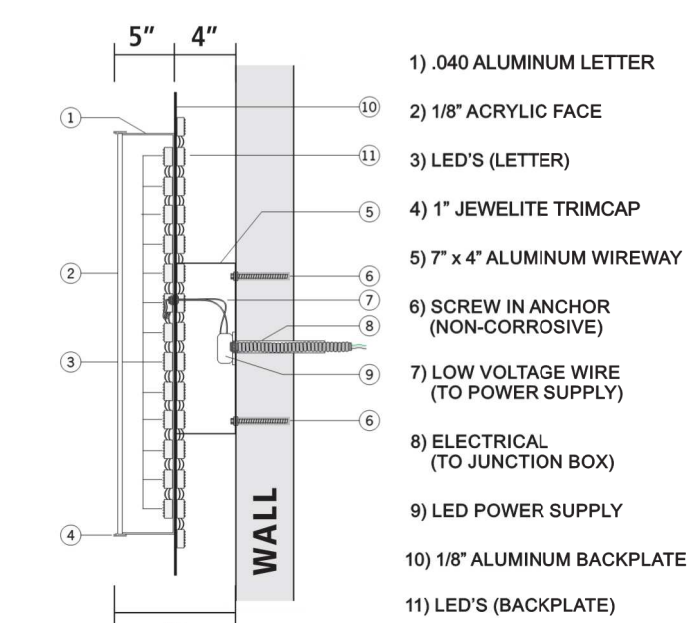
DESIGN#: 9162D
SALES: KRISTIAN BAKER
ART: KRISTIAN BAKER
DATE: 8.18.20
PROJECT: 151 COFFEE - COPPELL
ADDRESS: 131 SOUTH DENTON TAP RD
COPPELL, TX 75019

SIGNATURE:

This drawing is the property of Global Signs Inc and has been furnished in confidence for bidding purposes only. No part of this drawing shall be replicated, duplicated, distributed, made available to others or used to any other extent; without written permission from Global Signs Inc. Any individual, company, firm or corporation who receives this document; however obtained, is to adhere to these restrictions. Failure to comply could result in the appropriate legal action being taken.

This drawing is conceptual only & for convenience of reference. It should not be relied upon as an exact representation of sizes, materials or colors used for signage.

EXHIBIT "E"
Page 5 of 5



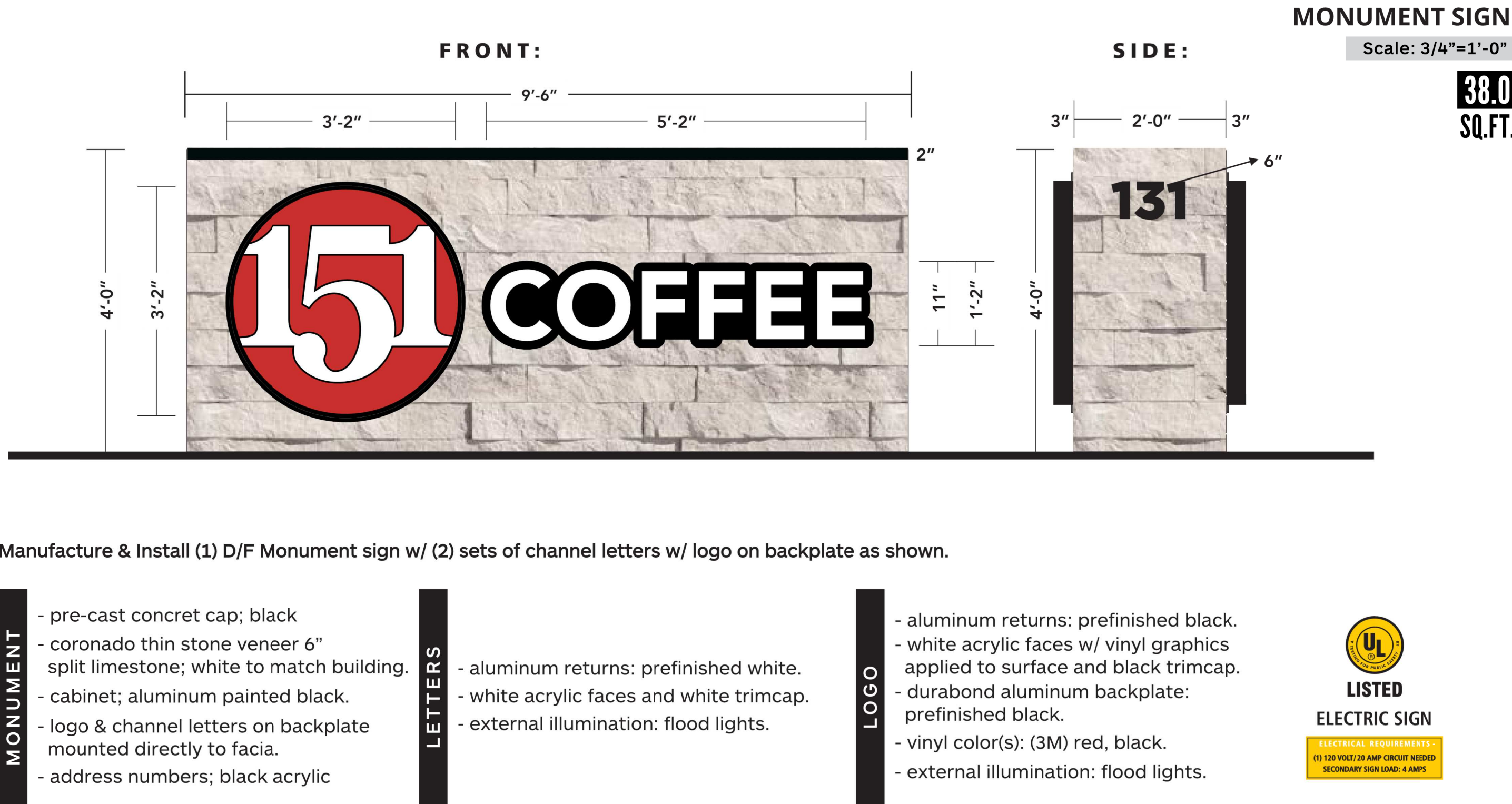
CHANNEL LETTERS

Scale: 1/2"=1'-0"

60.0
SQ.FT.

Manufacture & Install (1) set of channel letters w/ logo on backplate as shown.

- LETTERS
- aluminum returns: prefinished white.
 - white acrylic faces and white trimcap.
 - internal illumination: white leds.
 - durabond aluminum backplate: prefinished black.
 - double white LEDs applied on backplate, creating white back splash on fascia.
- LOGO
- aluminum returns: prefinished black.
 - white acrylic faces w/ vinyl graphics applied to surface and black trimcap.
 - internal illumination: white leds.
 - durabond aluminum backplate: prefinished black.
 - double white LEDs applied on backplate, creating white back splash on fascia.
 - vinyl color(s): (3M) red, black.



Manufacture & Install (1) D/F Monument sign w/ (2) sets of channel letters w/ logo on backplate as shown.

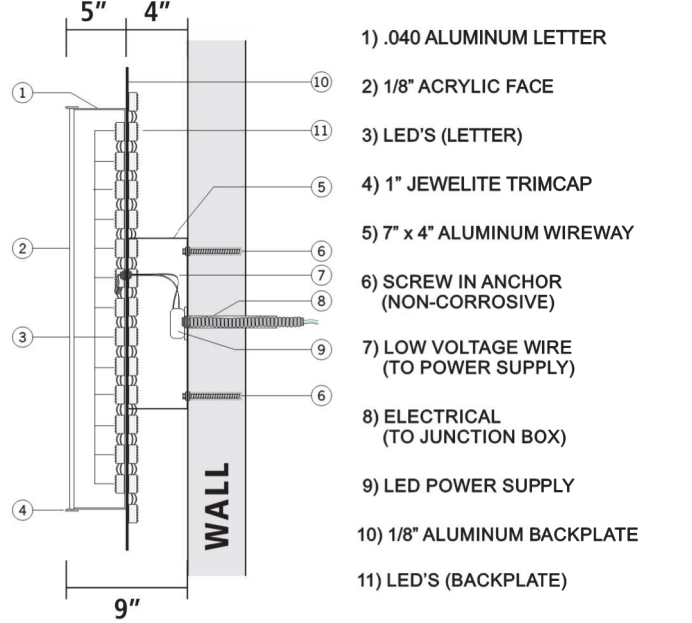
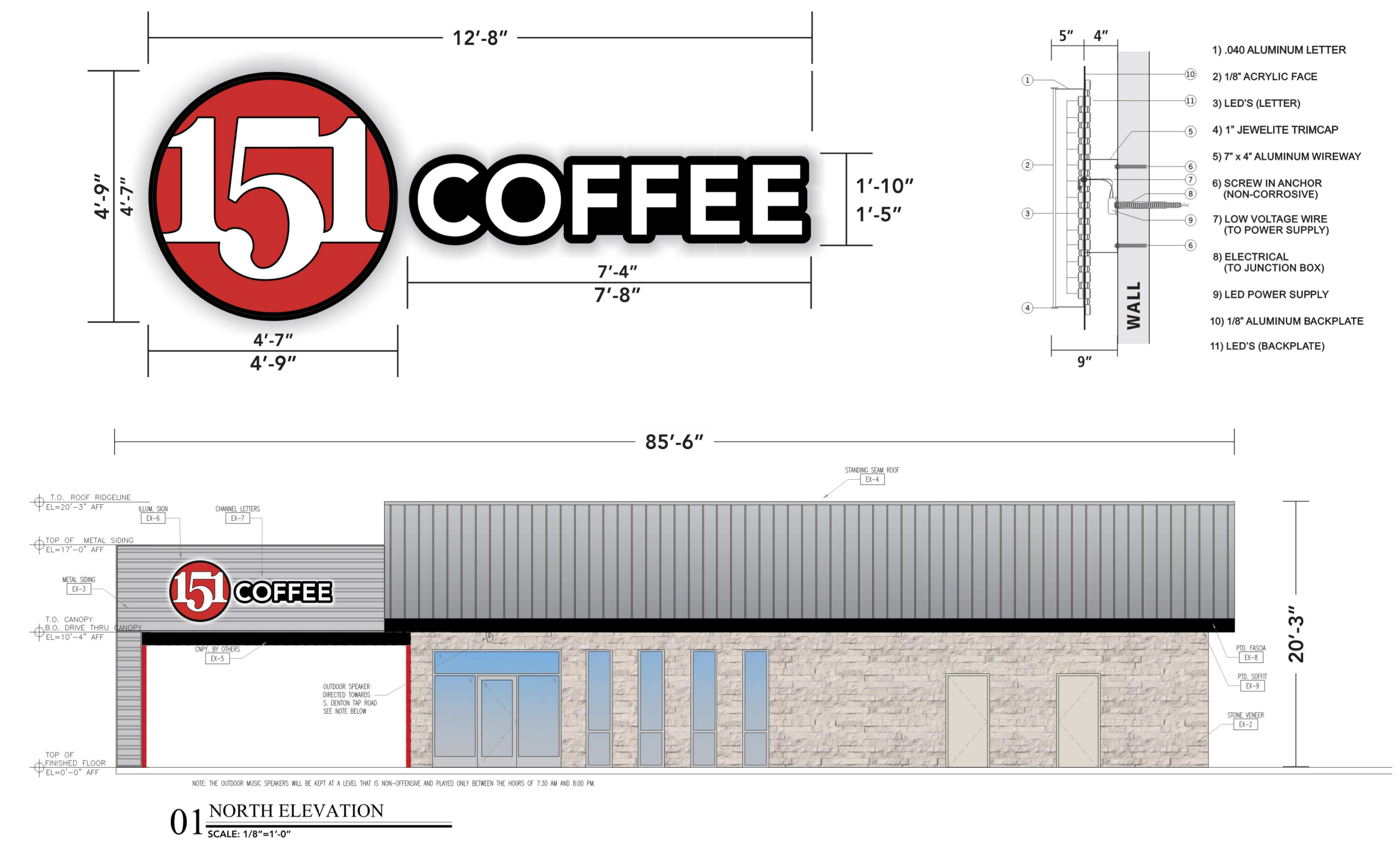
- MONUMENT
- pre-cast concret cap; black
 - coronado thin stone veneer 6" split limestone; white to match building.
 - cabinet; aluminum painted black.
 - logo & channel letters on backplate mounted directly to fascia.
 - address numbers; black acrylic

LETTERS

- aluminum returns: prefinished white.
- white acrylic faces and white trimcap.
- external illumination: flood lights.

LOGO

- aluminum returns: prefinished black.
- white acrylic faces w/ vinyl graphics applied to surface and black trimcap.
- durabond aluminum backplate: prefinished black.
- vinyl color(s): (3M) red, black.
- external illumination: flood lights.



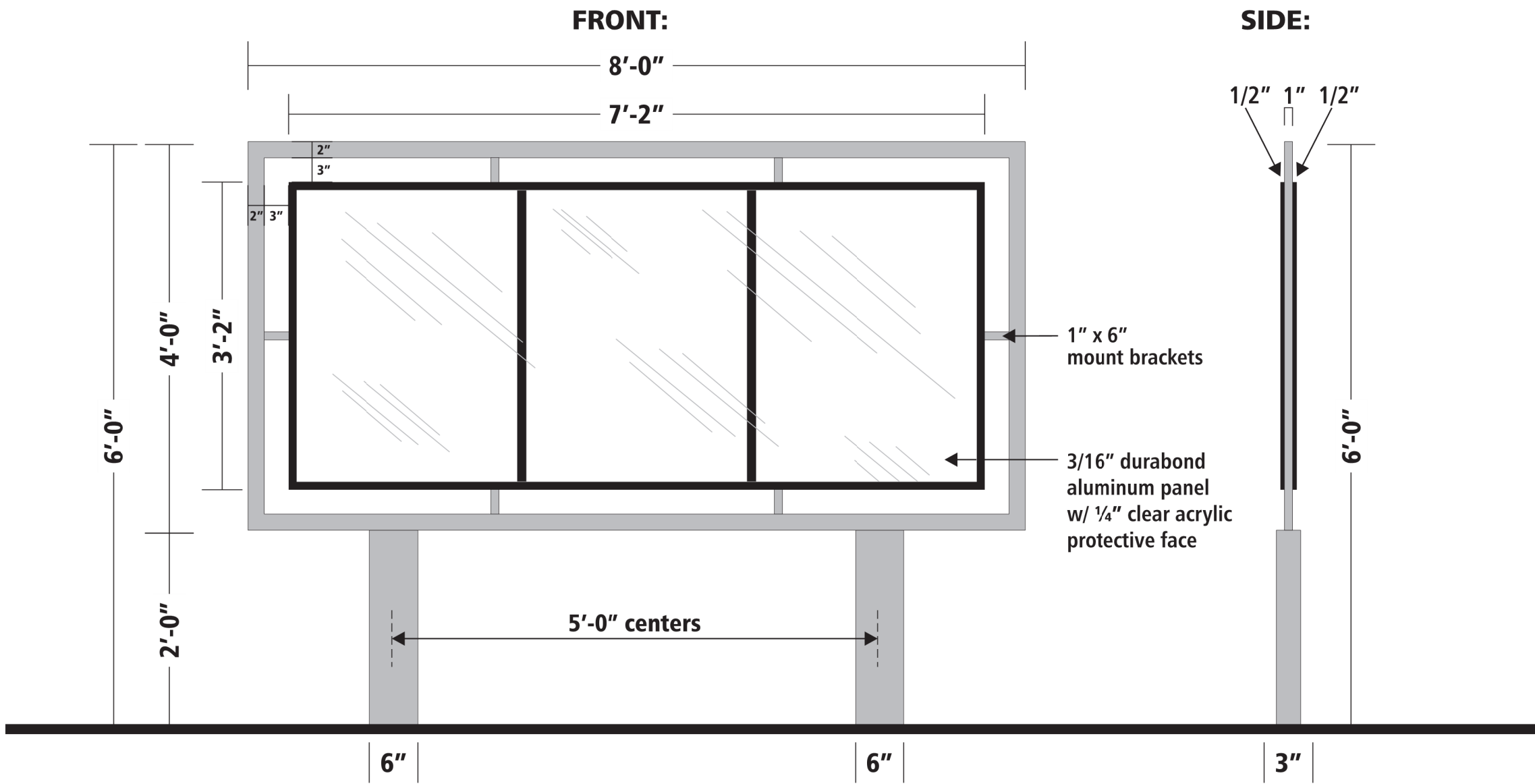
CHANNEL LETTERS

Scale: 1/2"=1'-0"

60.0
SQ.FT.

Manufacture & Install (1) set of channel letters w/ logo on backplate as shown.

- LETTERS
- aluminum returns: prefinished white.
 - white acrylic faces and white trimcap.
 - internal illumination: white leds.
 - durabond aluminum backplate: prefinished black.
 - double white LEDs applied on backplate, creating white back splash on fascia.
- LOGO
- aluminum returns: prefinished black.
 - white acrylic faces w/ vinyl graphics applied to surface and black trimcap.
 - internal illumination: white leds.
 - durabond aluminum backplate: prefinished black.
 - double white LEDs applied on backplate, creating white back splash on fascia.
 - vinyl color(s): (3M) red, black.



MANUFACTURE AND INSTALL (1) S/F MENU BOARD SIGN AS SHOWN.

- SIGN POSTS & FRAME TO BE CONSTRUCTED OF ALUMINUM TUBING AND PAINTED METALLIC SILVER.
- MENU BOARD TO BE WHITE DURABOND ALUMINUM w/ (3M) BLACK VINYL DIVIDERS APPLIED TO SURFACE. ALUMINUM TRIM TO BE PAINTED BLACK AND WILL HOLD REMOVABLE CLEAR ACRYLIC PROTECTIVE COVERS.
- MENU BOARD MOUNTED TO SIGN FRAME WITH ALUMINUM BRACKETS THAT ARE PAINTED METALLIC SILVER.

MENU BOARDS

Scale: 3/4"=1'-0"

48.0
SQ.FT.