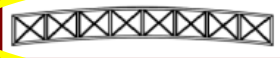


Bridge Options

Bridge Types to Select From



"Trailblazer" – The Trailblazer style is a familiar Pratt truss design with parallel top and bottom chords. The ends of this style can either be vertical or sloped if desired. By increasing the truss height and raising the floor up in the truss to form an "H-section", the Trailblazer style can span over 150 feet.



"Expedition" – The Expedition style is similar to the Trailblazer with parallel top and bottom chords. This style incorporates two diagonals for an "X-braced" look. The symmetry of this style makes it a popular choice for multiple span bridges. Similar to the Trailblazer, the Expedition can have vertical or sloped ends and can also span over 150 feet.



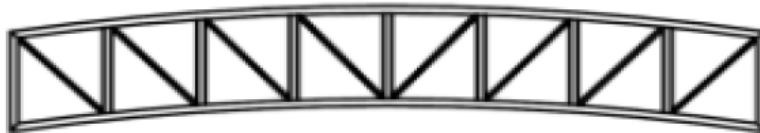
"Crossbow" – The Crossbow style incorporates a bowstring truss with a curved top chord to give a classic parabolic look. The Crossbow style can be used in spans from 50 feet up to 200 feet. The truss height at the center of the bridge is usually around 10% of the clear span. With longer spans, the truss height may be reduced to 7% for easier shipping.



"Cornerstone" – The Cornerstone style utilizes a modified bow truss with a curved top chord and a flat bottom chord. The bridge deck can be cambered to match the top chord or flat to match the bottom chord. The Cornerstone style is perfect for projects requiring a long span bridge with limited approach space. The truss height varies to allow a low abutment backwall while still maintaining maximum truss depth at the center. This style is popular because the cambered floor option allows a constant rail height for an unobstructed view over the top chord. The Cornerstone style is perfect for longer spans up to 200 feet.

These Three Bridges can be selected at no additional material cost

Trailblazer



Crossbow



Corner Stone



Trailblazer



Corner Stone



Crossbow



The Expedition

